



Technical Specification

Features

Wire Wound Construction
 Magnetic Shielded Construction
 Excellent environmental characteristics
 Excellent Mechanical Strength
 Excellent Solderability
 High reliability
 Low Profile

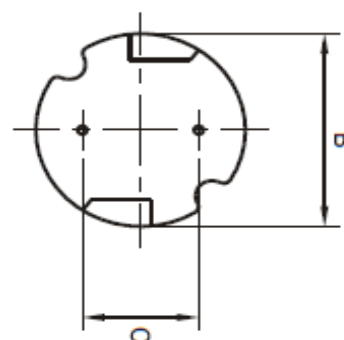
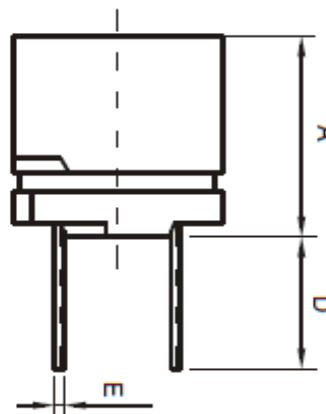
Applications

VCR '2 PDP, LCD, TV set
 Automotive Systems
 Computer / Peripheral Equipment
 GPS, DC/Dc Converter, XDSL Modem
 Electronic Games
 Communications Equipment
 General Electronic Applications
 Network Systems

Technical Dimensions

A (mm)	B (mm)	C (mm)	D (mm)
6,5	6,0 / +/-0,5	4,0 +/-0,5	4 min
E (mm)			
0,55			

Dimensions



Electrical Characteristics

Technical Information

Testing LCR Bridge, measured @ 1KHz 0,1V HP4284A
 Equivalent acceptacle
 RDC. QuadTech 1880 Milliohmeter
 IDC: Max. Lowers inductance by 10%
 Operating Temperature: -40°C ~ +105°C
 Storage Temperature: -40°C ~ +105°C
 Solder Methods: Vapor Phase, Infrared Reflow
 Marking: Inductance and tolerance
 Note: All specifications subject to change without notice.

Inductance	Inductance Code	IDC	DCR max.
560μH	561	0,190A	3,210Ω

THT Radial Shielded Power Choke

Part No.: **S10R31**

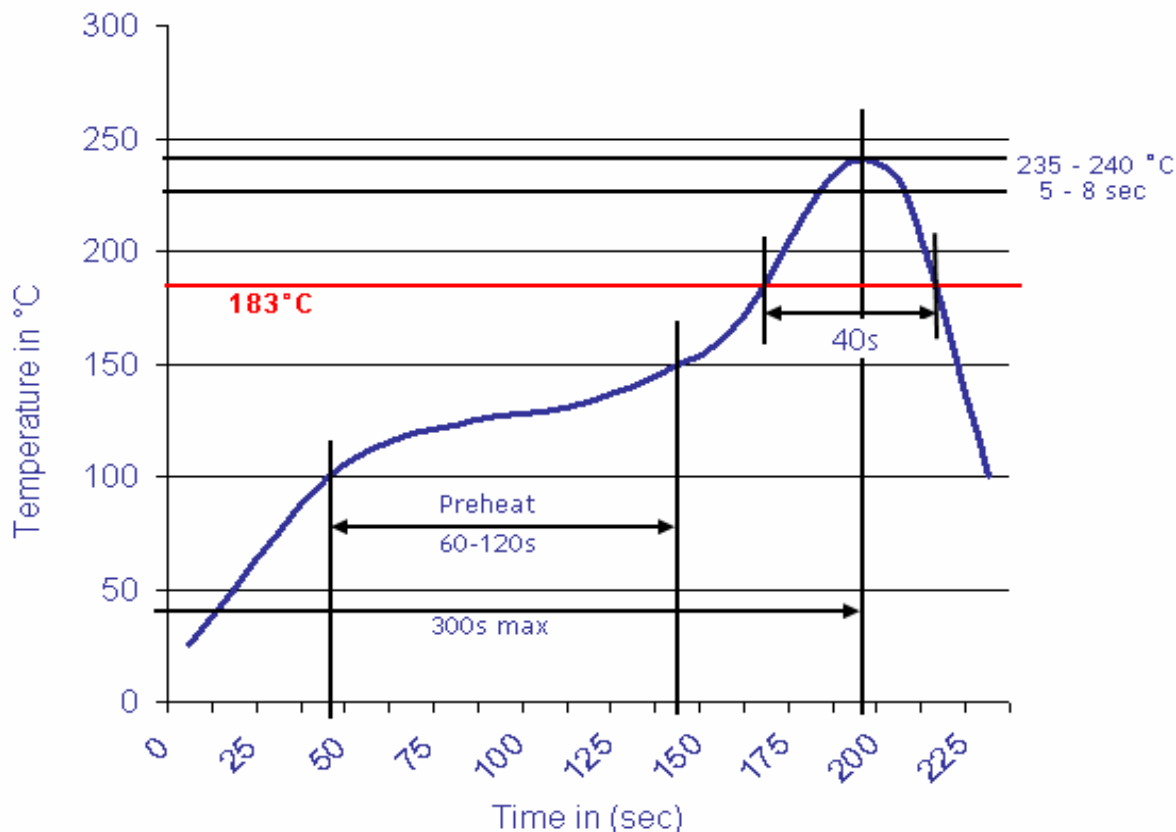
Customer:

DRW:	Jason	CHKD	Jules	MATL:	Wu	DATE	02.05.2009
APPD:	Join			FINISH	Shieh	Sheet	1 from 2



Soldering Profile

Classification Reflow Profile (JEDEC J-STD-020C)



Ordering Information

Serie	Inductance	Tolerance	Lead Length	ROHS	Packing
S10R31	561	K	50	R	BU10

561= 560µH	K= Tol. 10%	50= 5mm	R= ROHS conform	BU= Bulk Ware
	J= Tol. 5%		N= NON ROHS conform	TY= Tray Package

THT Radial Shielded Power Choke

Part No.: **S10R31**
 Customer:

DRW:	Jason	CHKD	Jules	MATL:	Wu	DATE	02.05.2009
APPD:	Join			FINISH	Shieh	Sheet	2 from 2

