



## Technical Specification

### Features

Wire Wound Construction  
 Magnetic Shielded Construction  
 Excellent environmental characteristics  
 Excellent Mechanical Strength  
 Excellent Solderability  
 High reliability  
 Low Profile

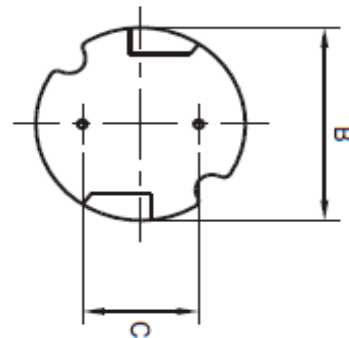
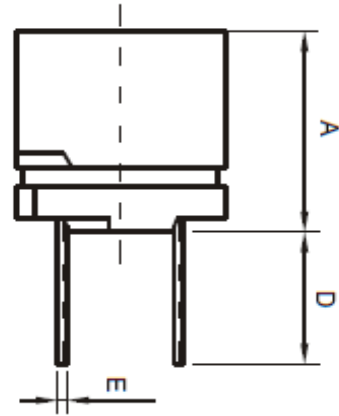
### Applications

VCR '2 PDP, LCD, TV set  
 Automotive Systems  
 Computer / Peripheral Equipment  
 GPS, DC/Dc Converter, XDSL Modem  
 Electronic Games  
 Communications Equipment  
 General Electronic Applications  
 Network Systems

### Technical Dimensions

A (mm)	B (mm)	C (mm)	D (mm)
6,5	6,0 / +/-0,5	4,0 +/-0,5	4 min
E (mm)			
0,55			

### Dimensions



## Electrical Characteristics

### Technical Information

Testing LCR Bridge, measured @ 1KHz 0,1V HP4284A  
 Equivalent acceptacle  
 RDC. QuadTech 1880 Milliohmmer  
 IDC: Max. Lowers inductance by 10%  
 Operating Temperature: -40°C ~ +105°C  
 Storage Temperature: -40°C ~ +105°C  
 Solder Methods: Vapor Phase, Infrared Reflow  
 Marking: Inductance and tolerance  
 Note: All specifications subject to change without notice.

Inductance	Inductance Code	IDC	DCR max.
470µH	471	0,210A	2,850Ω

### THT Radial Shielded Power Choke

Part No.: **S10R31**

Customer:

DRW:	Jason	CHKD	Jules	MATL:	Wu	DATE	02.05.2009
APPD:	Join			FINISH	Shieh	Sheet	1 from 2



**Soldering Profile**

**Classification Reflow Profile (JEDEC J-STD-020C)**



**Ordering Information**

Serie	Inductance	Tolerance	Lead Length	ROHS	Packing
<b>S10R31</b>	<b>471</b>	<b>K</b>	<b>50</b>	<b>R</b>	<b>BU10</b>

471= 470µH	K= Tol. 10%	50= 5mm	R= ROHS conform	BU= Bulk Ware
	J= Tol. 5%		N=NON ROHS conform	TY= Tray Package

<b>THT Radial Shielded Power Choke</b>	
Part No.:	<b>S10R31</b>
Customer:	

DRW:	Jason	CHKD	Jules	MATL:	Wu	DATE	02.05.2009
APPD:	Join			FINISH	Shieh	Sheet	2 from 2

