



Technical Specification

Features

Wire Wound Construction
Magnetic Shielded Construction
Excellent environmental characteristics
Excellent Mechanical Strength
Excellent Solderability
High reliability
Low Profile

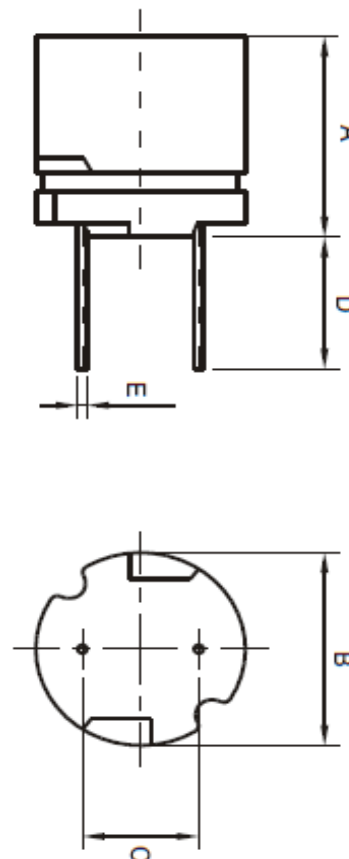
Applications

VCR '2 PDP, LCD, TV set
Automotive Systems
Computer / Peripheral Equipment
GPS, DC/Dc Converter, XDSL Modem
Electronic Games
Communications Equipment
General Electronic Applications
Network Systems

Technical Dimensions

A (mm)	B (mm)	C (mm)	D (mm)
6,5	6,0 / +/-0,5	4,0 +/-0,5	4 min
E (mm)			
0,55			

Dimensions



Electrical Characteristics

Technical Information

Testing LCR Bridge, measured @ 1KHz 0,1V HP4284A
Equivalent inductance
RDC. QuadTech 1880 Milliohm meter
IDC: Max. Lowers inductance by 10%
Operating Temperature: -40°C ~ +105°C
Storage Temperature: -40°C ~ +105°C
Solder Methods: Vapor Phase, Infrared Reflow
Marking: Inductance and tolerance
Note: All specifications subject to change without notice.

Inductance	Inductance Code	IDC	DCR max.
39μH	390	0,720A	0,260Ω

THT Radial Shielded Power Choke

Part No.: **S10R31**

Customer:

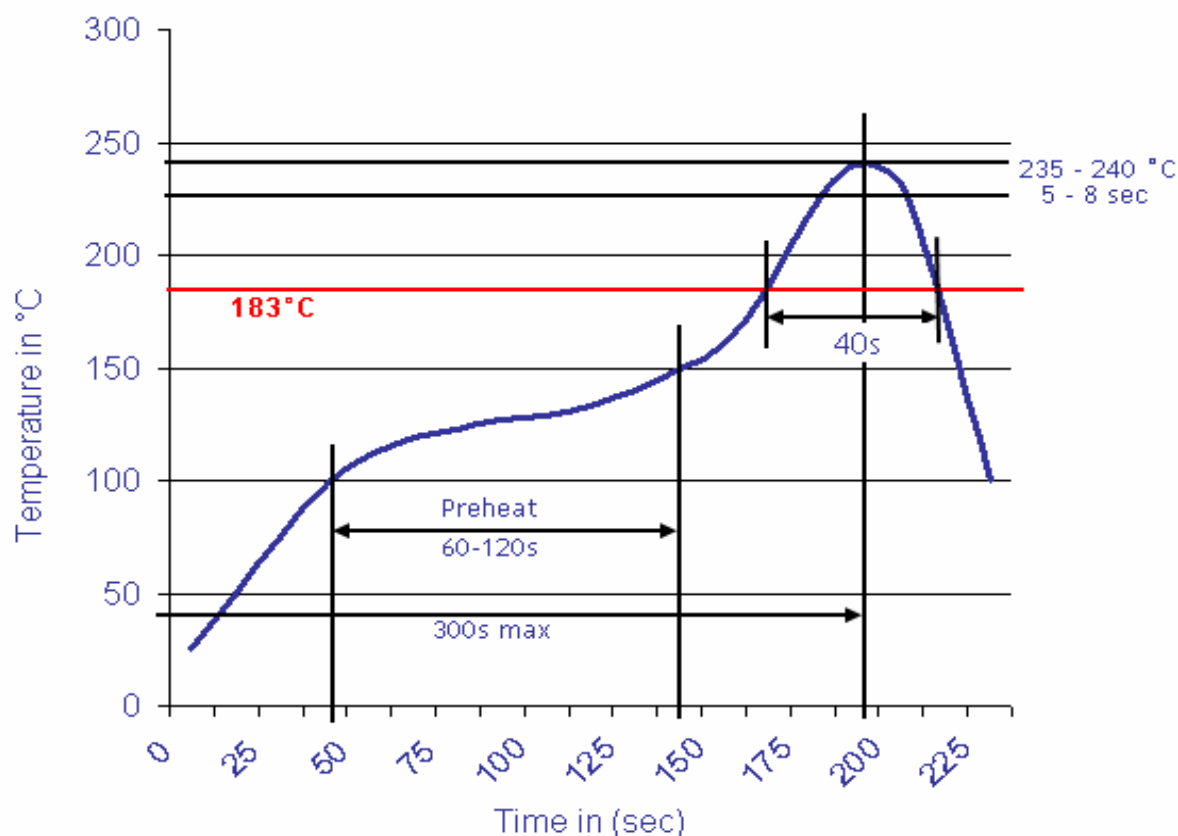
DRW:	Jason	CHKD	Jules	MATL:	Wu	DATE	02.05.2009
APPD:	Join			FINISH	Shieh	Sheet	1 from 2

Copyright by EDCON-COMPONENTS H.Schmitt 20.6.2008



Soldering Profile

Classification Reflow Profile (JEDEC J-STD-020C)



Ordering Information

Serie	Inductance	Tolerance	Lead Length	ROHS	Packing	
S10R31	390	K	50	R	BU10	

390= 39µH	K= Tol. 10%	50= 5mm	R= ROHS conform	BU= Bulk Ware
	J= Tol. 5%		N= NON ROHS conform	TY= Tray Package

THT Radial Shielded Power Choke

Part No.:	S10R31
Customer:	

DRW:	Jason	CHKD	Jules	MATL:	Wu	DATE	02.05.2009
APPD:	Join			FINISH	Shieh	Sheet	2 from 2

