



Technical Specification

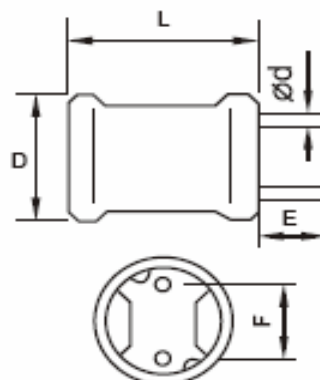
Features

Wire Wound Construction
Polyolefin Shrink Tube
Excellent heat resistance
Excellent environmental characteristics
High reliability

Applications

Power Supplies
SCR and TRIAC Controls
RFI Suppression
Filters
Switching Regulators

Dimensions



Technical Dimensions

| D (mm) | L (mm) | E (mm) | F (mm) |
|--------|--------|--------|--------|
| 11,0 | 18,0 | 5,0/15 | 5 |
| d (mm) | | | |
| 0,8 | | | |

Electrical Characteristics

Technical Information

Testing LCR Bridge, measured @ 1KHz 0,1V HP4284A
Equivalent acceptacle
RDC. QuadTech 1880 Milliohmmeter
IDC: Max. Lowers inductance by 10%
Operating Temperature: -55°C ~ +125°C
Shrink tube: Flame retardent UL type VW-1
Marking: Inductance and tolerance
Note: All specifications subject to change without notice.

| Inductance | Inductance Code | IDC | DCR max. |
|------------|-----------------|--------|----------|
| 10μH | 100 | 5,000A | 0,031Ω |

THT Radial UL-Tube Power Choke

Part No.: **S10R08**

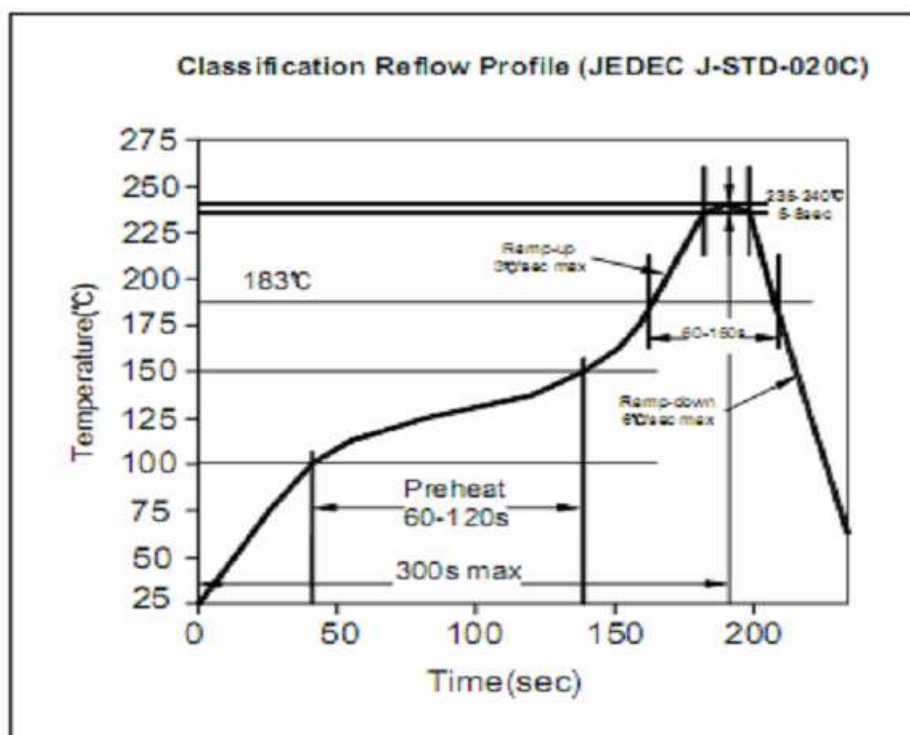
Customer:

| | | | | | | | |
|-------|-------|------|-------|--------|-------|-------|------------|
| DRW: | Jason | CHKD | Jules | MATL: | Wu | DATE | 06.06.2007 |
| APPD: | Join | | | FINISH | Shieh | Sheet | 1 from 2 |

Copyright by EDCON-COMPONENTS H.Schmitt 20.6.2008



Soldering Profile



Ordering Information

| Serie | Inductance | Tolerance | Lead Length | ROHS | Packing | |
|---------------|------------|-----------|-------------|----------|-------------|--|
| S10R08 | 100 | M | 50 | R | BU10 | |

| | | | | |
|------------------|--------------------|-----------------|----------------------------|-------------------------|
| 100= 10μH | M= Tol. 20% | 50= 5mm | R= ROHS conform | BU= Bulk Ware |
| | K= Tol. 10% | 15= 15mm | N= NON ROHS conform | TY= Tray Package |

THT Radial UL-Tube Power Choke

Part No.: **S10R08**

Customer:

| | | | | | | | |
|-------|-------|------|-------|--------|-------|-------|------------|
| DRW: | Jason | CHKD | Jules | MATL: | Wu | DATE | 06.06.2007 |
| APPD: | Join | | | FINISH | Shieh | Sheet | 2 from 2 |

