

### Features

These Chokes are fitting with high-permeability toroid core ( ferrite).

They are mainly used in devices equipped with switched-mode power supplies, and in filters designed to prevent both the spread of parasitic noise within the device, and the effects of line noise on the device itself.

### Technical Specification

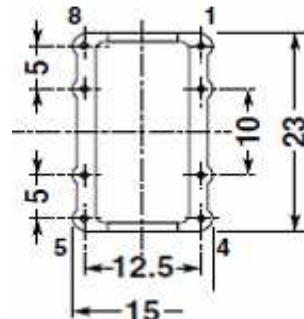
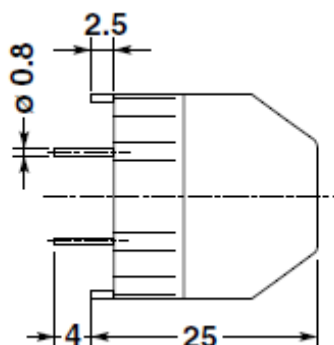
#### Technical Data:

Rated Current:	referred to 250VAC 50/60Hz and 60°C ambient temperature
Rated Inductance:	at +20°C and 10kHz, 0,1mA.
Inductance tolerance:	.+ 50 -30%
Inductance loss:	<10% at DC initial loading with $I_R$
Testing Voltage:	1500V -50Hz, 2 sec, winding to winding
Climatic category:	DIN GKC ( -40°C to +125°C; humidity cat.C).
DC resistance:	at +20°C
Derating operating current:	at +120°C ambient temperature $I=0$
Overtemperature of windings:	< 55°C
Max. permissible temperature of windings:	115°C%
Weight:	10gr.

The case are of flame-retardent plastic material in accordance with UL 94V-0

The choke are tested in accordance with EN 138100; EN60938-1

#### Dimensions ( vertical mounting )



○ Pins  
● Start of winding

Version B

Rated current per winding (A)	Rated inductance per winding (mH)	DC resistance per winding (typical) mΩ
3,0	1,2	70

### Potted Current Compensated Chokes

Part No.: **F12090**

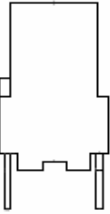
Customer:

DRW:	Jason	CHKD	Jules	MATL:	Wu	DATE	04.07.2009
APPD:	Join			FINISH	Shieh	Sheet	1 from 2

Copyright by EDCON-COMPONENTS H.Schmitt 20.6.2008

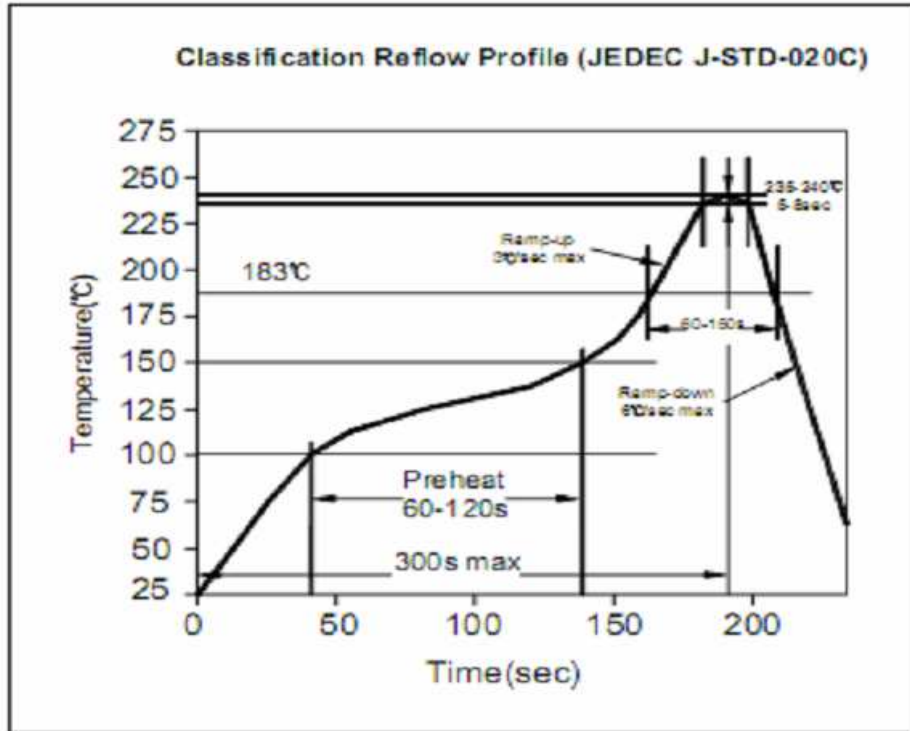
[www.edcon-components.com](http://www.edcon-components.com)

email: [info@edcon-components.com](mailto:info@edcon-components.com)



## Soldering Profile

### Soldering Profile for Lead Soldering



## Ordering Information

Serie	Tolerance	ROHS	Packing			
-------	-----------	------	---------	--	--	--

F12090	----	O	R	TY		
--------	------	---	---	----	--	--

<b>O=</b> Tolerance +50% ~ -30%	<b>R=</b> ROHS conform <b>N=</b> NON ROHS conform	<b>TY=</b> Tray Packing
---------------------------------------	--	----------------------------

## Potted Current Compensated Chokes

Part No.: **F12090**

Customer:

DRW:	Jason	CHKD	Jules	MATL:	Wu	DATE	04.07.2009
APPD:	Join			FINISH	Shieh	Sheet	2 from 2