

# EDCON-COMPONENTS

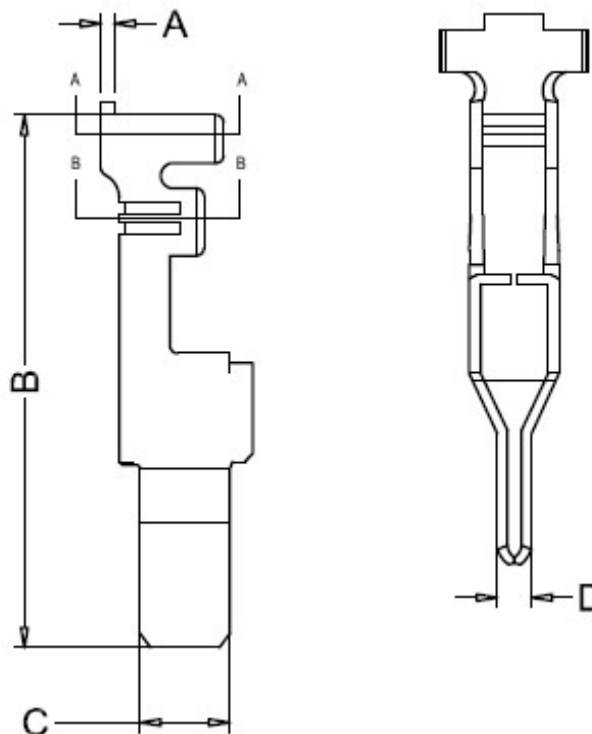


## Technical Discription

Voltage Rating: 600V  
 Contact Resistance: 20mΩ max.  
 Withstanding Voltage: 1000VAC/minute  
 Operating Temperature: -40°C to + 130°C  
 Contact Material: Copper-alloy  
 Use w. Housing: T68U003  
 Contact Plating: TIN-Plated / Gold-Plated

Wire Size AWG8: 48A,DC  
 Wire Size AWG10: 40A,DC  
 Wire Size AWG12: 32A,DC  
 Wire Size AWG14: 25A,DC  
 Wire Size AWG16: 20A,DC

## Drawing



**Male Terminal for Serie Housing  
T68U003**

Part No.: **T68U005**

Customer:

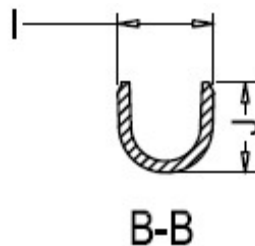
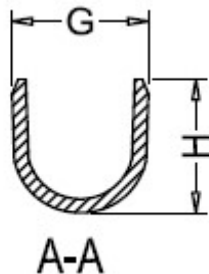
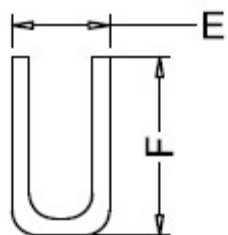
Tolerance	x	x.x	x.xx	x.xxx	Angle
	±	±0,40	±0,25	±0,15	± 3°
DRW:	Jason	CHKD	Wilson	MATL:	Wilson
APPD:	Schumi			FINISH	Jamy
				TOLERANCE	Mason
				DATE	22.03.2018
				Sheet No.	1 from 3

# EDCON-COMPONENTS



## Dimension (mm)

Size	A	B	C	D	E	F	G	H	I	J	Applicable wire	Q. of Reel
<b>A</b>	0,50	27,60	4,80	2,00	3,80	7,10	5,94	5,69	3,80	3,92	AWG 14~ 16	1500PCS
<b>B</b>	0,50	27,60	4,80	2,00	3,80	7,10	5,90	6,60	5,40	6,10	AWG 8~ 12	1500PCS



**Male Terminal for Serie Housing  
T68U003**

Part No.: **T68U005**

DRW:	Jason	CHKD	Wilson	MATL:	Wilson	TOLERANCE	Mason	DATE	22.03.2018	Customer:
APPD:	Schumi			FINISH	Jamy		Sheet No.	2 from 3		

[www.edcon-components.com](http://www.edcon-components.com)

email: [info@edcon-components.com](mailto:info@edcon-components.com)

# EDCON-COMPONENTS



## Ordering Informations

Serie	AWG Size	Contact Plating	Special Function	Special Function	Special Function	Special Function	ROHS	Packing		
<b>T68U005</b>	<b>A</b>	<b>TN</b>	<b>NN</b>	<b>NN</b>	<b>N</b>	<b>N</b>	<b>R</b>	<b>TR</b>		

<b>A=</b> AWG14~16	<b>TN=</b> Tinned	<b>NN=</b> No Function	<b>NN=</b> No Function	<b>N=</b> No Function	<b>N=</b> No Function	<b>R=</b> ROHS Conform	<b>BU=</b> Bulk-Ware
<b>B=</b> AWG8~12	<b>GF=</b> Gold Flash 0,25~0,5μ					<b>N=</b> NON ROHS Conform	
							<b>TR=</b> Tape/Reel Packing w. Cap w. needed
	<b>GD=</b> Gold 15μ						
	<b>GE=</b> Gold 30μ						

<b>Male Terminal for Serie Housing T68U003</b>	
Part No.:	<b>T68U005</b>
Customer:	

DRW:	Jason	CHKD	Wilson	MATL:	Wilson	TOLERANCE	Mason	DATE	22.03.2018
APPD:	Schumi			FINISH	Jamy		Sheet No.		3 from 3