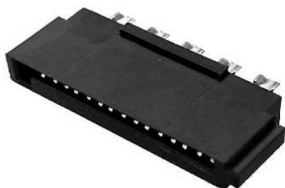
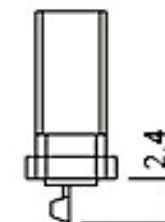
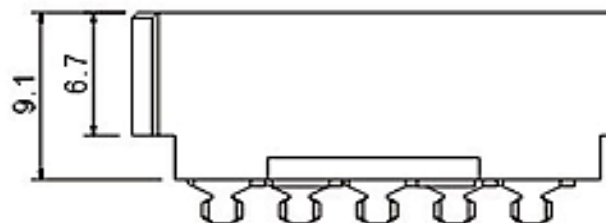
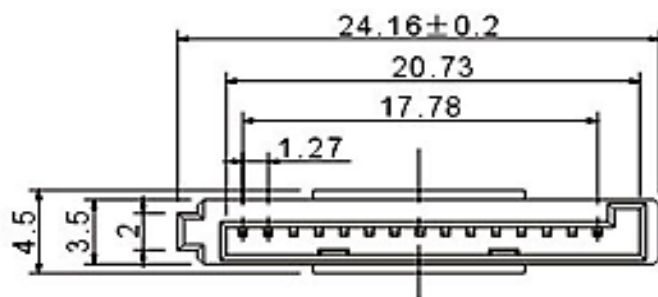


# EDCON-COMPONENTS



## Technical Discription

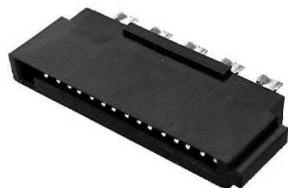
Temperature Range:	. -30°C ~ +70°C
Rated Load	DC30V 0,5A
Contact Resistance:	≤ 0,03 Ω
Insulation Resistance:	≥ 500M Ω
Withstanding Voltage:	AC 500V / 50Hz) 1 min.
Insertion and Extraction Force:	3 ~ 20N
Lifetime:	5000 cycles



<b>SATA Connector</b>	
Part No.:	<b>T77007</b>
Customer:	

DRW:	Jason	CHKD	Wilson	MATL:	Wilson	TOLERANCE	Mason	DATE	10.04.2009
APPD:	Schumi			FINISH	Jamy		Sheet No.	1 from 3	

# EDCON-COMPONENTS



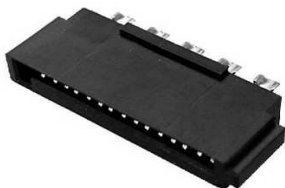
## Ordering Informations

Serie	Pos.	ROHS	Packing							
<b>T77007</b>	<b>07</b>	<b>R</b>	<b>TY</b>							

<b>07</b> = 7Pos.	<b>R</b> = ROHS Conform	<b>TY</b> = Tray Package
	<b>R</b> = ROHS Conform	<b>BU</b> = Bulk Ware

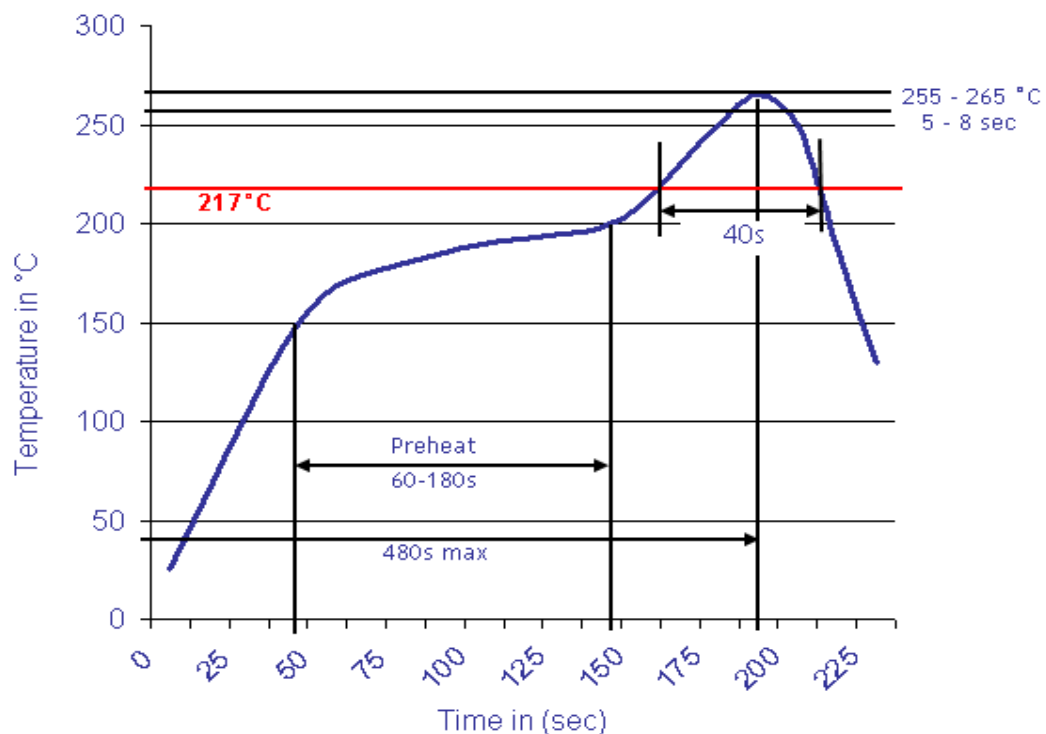
<b>SATA Connector</b>
Part No.: <b>T77007</b>
Customer:

DRW:	Jason	CHKD	Wilson	MATL:	Wilson	TOLERANCE	Mason	DATE	10.04.2009
APPD:	Schumi			FINISH	Jamy		Sheet No.	2 from 3	



Lead Free Soldering Curve

Classification Reflow Profile (JEDEC J-STD-020C)



<b>SATA Connector</b>	
Part No.:	<b>T77007</b>
Customer:	

DRW:	Jason	CHKD	Wilson	MATL:	Wilson	TOLERANCE	Mason	DATE	10.04.2009
APPD:	Schumi			FINISH	Jamy		Sheet No.	3 from 3	