

# EDCON-COMPONENTS



## Specifications

### Features

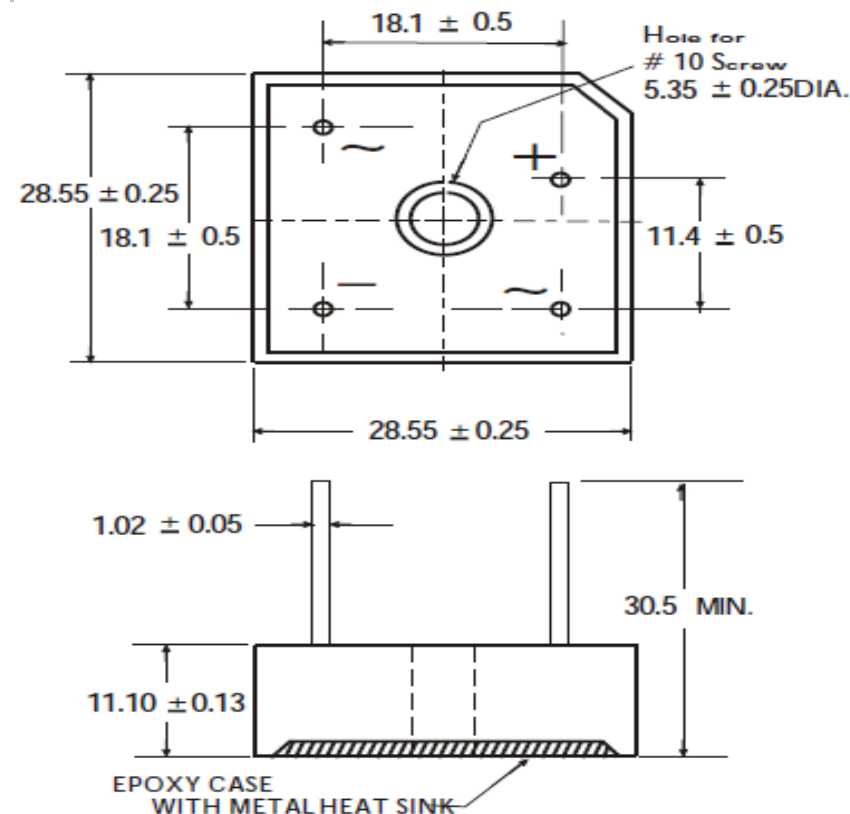
This series is UL listed under the recognized Component index file number E142814  
 The plastic material used carries Underwriters Laboratory flammability recognition 94V-0  
 Integrally molded heat sinks provide low thermal resistance for maximum heat dissipation  
 Surge overload ratings to 300 amperes  
 Universal 4-way terminals snap-on, wrap-around, solder or P.C. Board mounting  
 Case: Molded plastic with heat sink integrally mounted in the brodge encapsulation  
 Terminals Plated copper leads 1,02mm diameter

Weight 20gr.

### Maximum Ratings & Electrical Characteristics Ratings at 25°C ambient temperature

| Parameter   | Symbols          | MP 10005W        | MP 1001W | MP 1002W | MP 1004W | MP 1006W | MP 1008W | MP 1010W | Unit             |
|---|------------------|------------------|----------|----------|----------|----------|----------|----------|------------------|
| Maximum reccurent peak reverse Voltage                    | VRRM             | 50               | 100      | 200      | 400      | 600      | 800      | 1000     | Volt             |
| Maximum rms Input voltage                                 | VRMS             | 35               | 70       | 140      | 280      | 420      | 560      | 700      | Volt             |
| Maximum dc blocking Voltage                               | VDC              | 50               | 100      | 200      | 400      | 600      | 800      | 1000     | Volt             |
| Maximum average forward output rectified<br>TA=100°C      | I(AV)            | 10               |          |          |          |          |          |          | Amps             |
| Peak forward surge current 8,3ms single<br>half sine-wave | IFSM             | 300              |          |          |          |          |          |          | Amps             |
| Maximum forward voltage drop                              | VF               | 1,00             |          |          |          |          |          |          | Volt             |
| Maximum revese voltage TA=25°C                            | IR               | 10               |          |          |          |          |          |          | µA               |
| Maximum revese voltage TA=125°C                           | IR               | 500              |          |          |          |          |          |          | µA               |
| Operating and storage temperature range                   | TJ<br>TSTG       | -55°C to + 150°C |          |          |          |          |          |          | °C               |
| I <sup>2</sup> t rating for fusing                        | I <sup>2</sup> t | 374              |          |          |          |          |          |          | A <sup>2</sup> t |
| Typical thermal resistance junction to case               | R 0 JA           | 2,1              |          |          |          |          |          |          | °C/W             |

## Technical Drawing (Unit: inch(mm))



**QUAD Bridge Rectifier 10A**

EDCON-Ser. **E19017**

International Serie: **MP10xxW**

|              |              |              |                  |                  |
|--------------|--------------|--------------|------------------|------------------|
| DRW: Jason   | CHKD: Wilson | MATL: Wilson | TOLERANCE: Mason | DATE: 10.05.2010 |
| APPD: Schumi | FINISH: Jamy |              | Sheet No.:       | 1 from 5         |

[www.edcon-components.com](http://www.edcon-components.com)

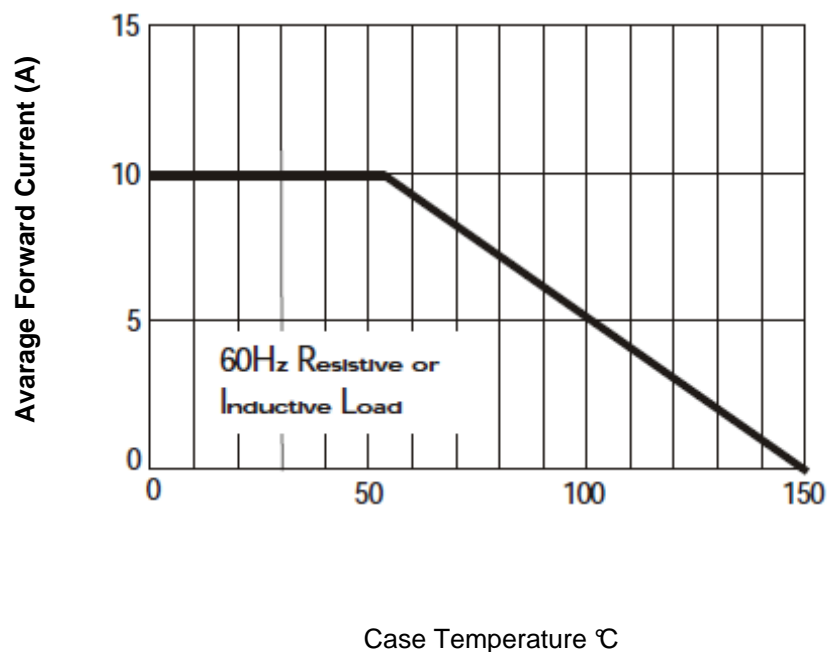
email: [info@edcon-components.com](mailto:info@edcon-components.com)

# EDCON-COMPONENTS

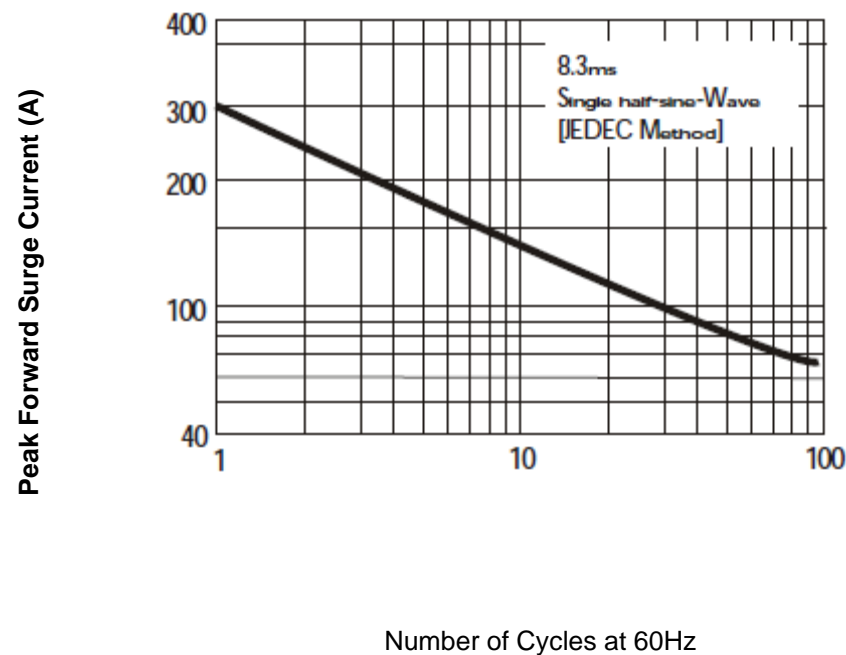


Rating & Characteristics Curves (TA=25°C unless otherwise noted)

Derating Curve for Output Rectified Current



Maximum NON Repetitive Forward Surge Current



**QUAD Bridge Rectifier 10A**

EDCON-Ser. **E19017**

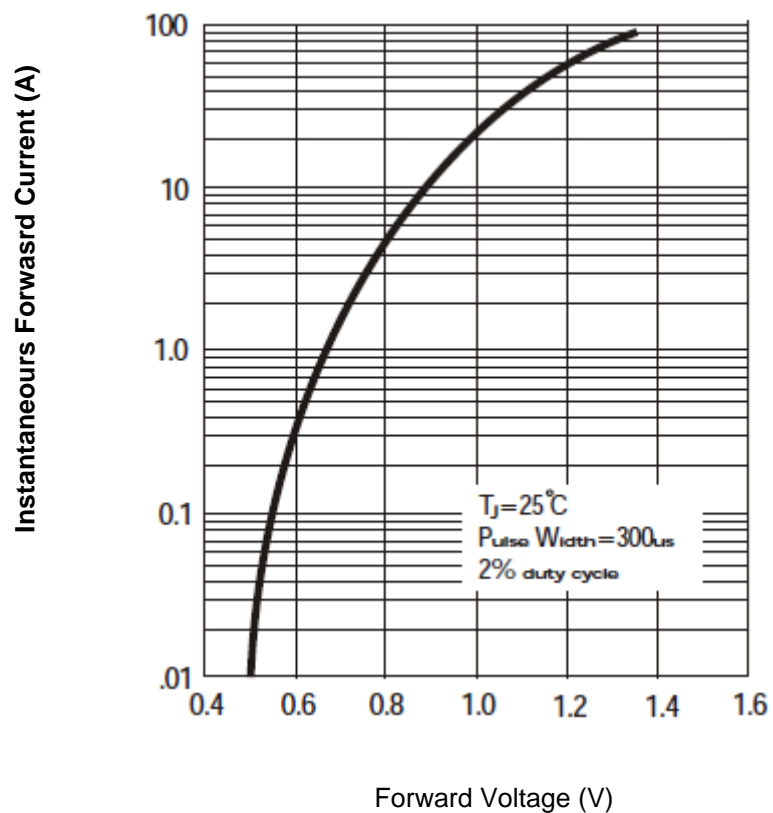
International Serie: **MP10xxW**

|       |        |      |        |        |        |           |           |          |            |
|-------|--------|------|--------|--------|--------|-----------|-----------|----------|------------|
| DRW:  | Jason  | CHKD | Wilson | MATL:  | Wilson | TOLERANCE | Mason     | DATE     | 10.05.2010 |
| APPD: | Schumi |      |        | FINISH | Jamy   |           | Sheet No. | 2 from 5 |            |

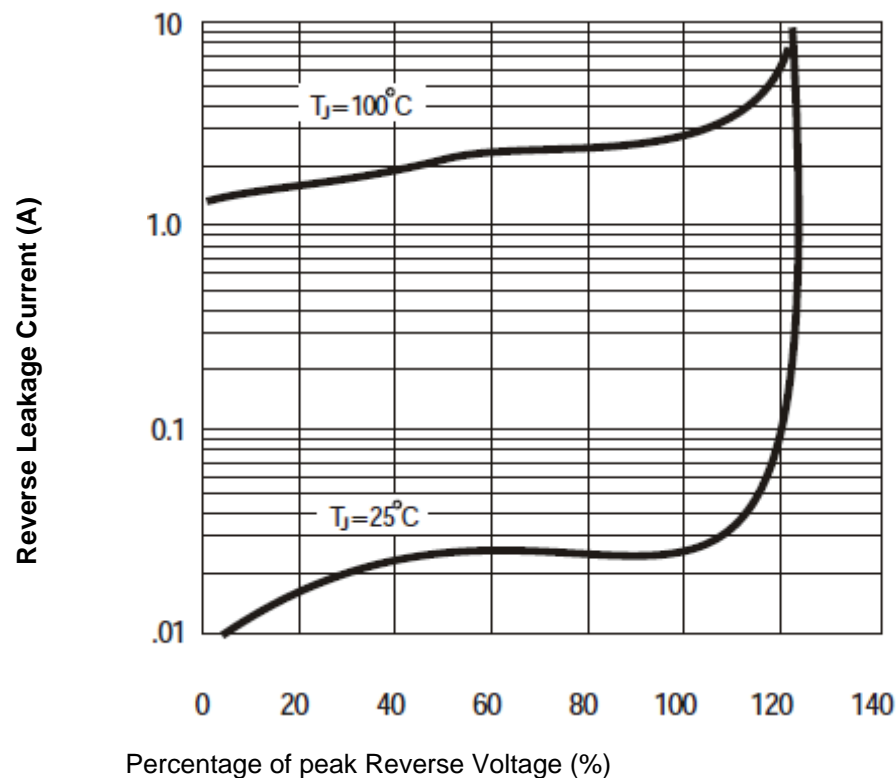


Rating & Characteristics Curves (TA=25°C unless otherwise noted)

Typical Forward Characteristics



Typical Reverse Characteristics



|                                  |                |
|----------------------------------|----------------|
| <b>QUAD Bridge Rectifier 10A</b> |                |
| EDCON-Ser.                       | <b>E19017</b>  |
| International Serie:             | <b>MP10xxW</b> |

|       |        |      |        |        |        |           |           |      |            |
|-------|--------|------|--------|--------|--------|-----------|-----------|------|------------|
| DRW:  | Jason  | CHKD | Wilson | MATL:  | Wilson | TOLERANCE | Mason     | DATE | 10.05.2010 |
| APPD: | Schumi |      |        | FINISH | Jamy   |           | Sheet No. |      | 3 from 5   |

# EDCON-COMPONENTS



Rating & Characteristics Curves (TA=25°C unless otherwise noted)

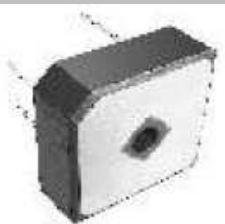
## Ordering Informations

|               |                    |                  |          |           |  |  |  |  |  |
|---------------|--------------------|------------------|----------|-----------|--|--|--|--|--|
| EDCON Serie   | International Type | Lead information | ROHS     | Package   |  |  |  |  |  |
| <b>E19017</b> | <b>MP10xxW</b>     | <b>LL</b>        | <b>R</b> | <b>BX</b> |  |  |  |  |  |

|                         |                             |                             |                 |
|-------------------------|-----------------------------|-----------------------------|-----------------|
| Look Voltage Code Table | <b>LL</b> = Long Lead       | <b>R</b> = ROHS Conform     | <b>BX</b> = Box |
|                         | <b>L4</b> = Lead length 4mm | <b>N</b> = NON ROHS Conform |                 |

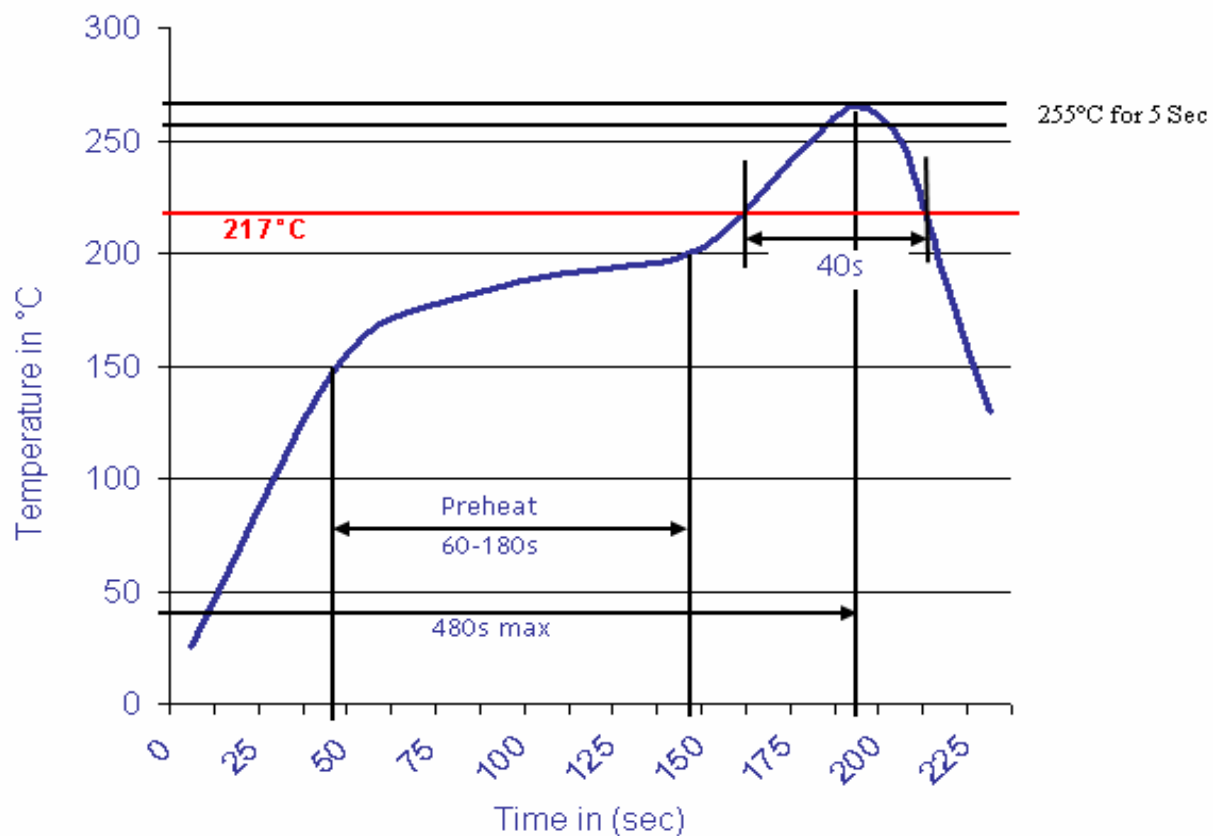
|                                  |                |
|----------------------------------|----------------|
| <b>QUAD Bridge Rectifier 10A</b> |                |
| EDCON-Ser.                       | <b>E19017</b>  |
| International Serie:             | <b>MP10xxW</b> |

|       |        |      |        |        |        |           |           |      |            |
|-------|--------|------|--------|--------|--------|-----------|-----------|------|------------|
| DRW:  | Jason  | CHKD | Wilson | MATL:  | Wilson | TOLERANCE | Mason     | DATE | 10.05.2010 |
| APPD: | Schumi |      |        | FINISH | Jamy   |           | Sheet No. |      | 4 from 5   |



Soldering Profile Curve

Classification Reflow Profile (JEDEC J-STD-020C)



|                                  |                |
|----------------------------------|----------------|
| <b>QUAD Bridge Rectifier 10A</b> |                |
| EDCON-Ser.                       | <b>E19017</b>  |
| International Serie:             | <b>MP10xxW</b> |

|       |        |      |        |        |        |           |           |          |            |
|-------|--------|------|--------|--------|--------|-----------|-----------|----------|------------|
| DRW:  | Jason  | CHKD | Wilson | MATL:  | Wilson | TOLERANCE | Mason     | DATE     | 10.05.2010 |
| APPD: | Schumi |      |        | FINISH | Jamy   |           | Sheet No. | 5 from 5 |            |