

EDCON-COMPONENTS



Specifications

Features

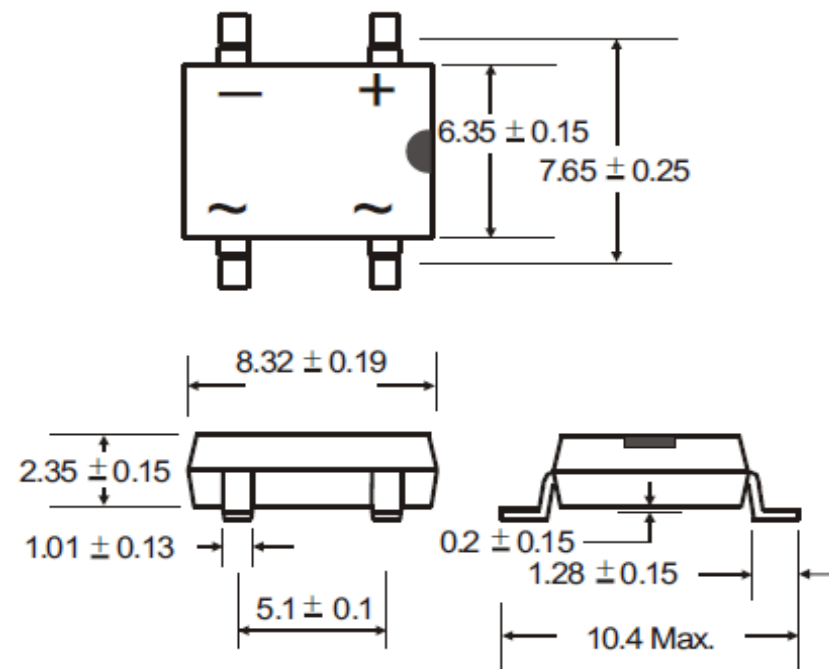
This Serie is UIL listed under the recognized Component Index file number E142814
 The palstic material used carries Underwriters Laboratory flammability recognition 94V-0
 Surge overload rating to 50 amperes.
 Case: Molded plastic
 Terminals: Plated leads solderable per MIL-STD- 202 Method 208
 Polarity: Marked on body
 Weight 1,0gr.

Maximum Ratings & Electrical Characteristics Ratings at 25°C ambient temperature

	Sym bols	DB151S	DB152S	DB153S	DB154S	DB155S	DB156S	DB157S	Unit
Maximum reecurrent peak reverse Voltage	VRRM	50	100	200	400	600	800	1000	Volt
Maximum rms Input voltage	VRMS	35	70	140	280	420	560	700	Volt
Maximum dc blocking Voltage	VDC	50	100	200	400	600	800	1000	Volt
Maximum average forward output rectified TA=100°C	I(AV)	1,5							Amps
Peak forward surge current 8,3ms single half sine-wave	IFSM	50							Amps
Maximum forward voltage drop	VF	1,1							Volt
Maximum revese voltage TA=25°C	IR	10							µA
Maximum revese voltage TA=125°C	IR	500							µA
Operating and storage temperature range	TJ TSTG	-55°C to + 150°C							°C
Type junction capacitance VR=4,0V f=1,0Mhz	CJ	25							pF
I²t rating for fusing	I²t	10							A²t
Typical thermal resistance junction to case	R 0 JA	110							°C/W

Technical Drawing (Unit: inch(mm))

DB-S



Dual-Inline Bridge Rectifier 1,5A

EDCON-Ser. **E12008**

International Serie: **DB15xS**

DRW:	Jason	CHKD	Wilson	MATL:	Wilson	TOLERANCE	Mason	DATE	10.05.2010
APPD:	Schumi			FINISH	Jamy		Sheet No.		1 from 5

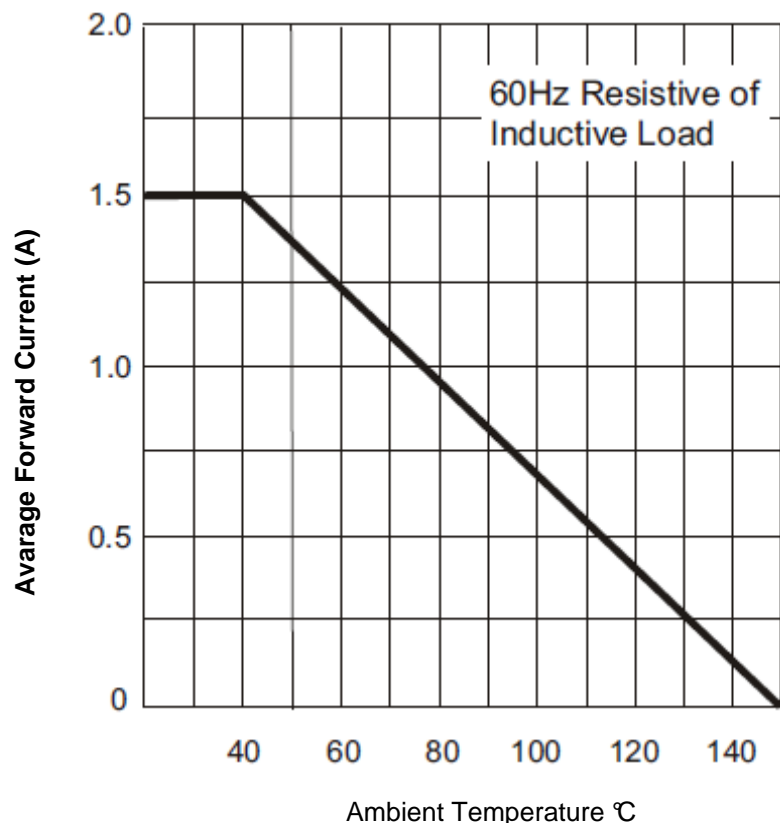
www.edcon-components.com

email: info@edcon-components.com

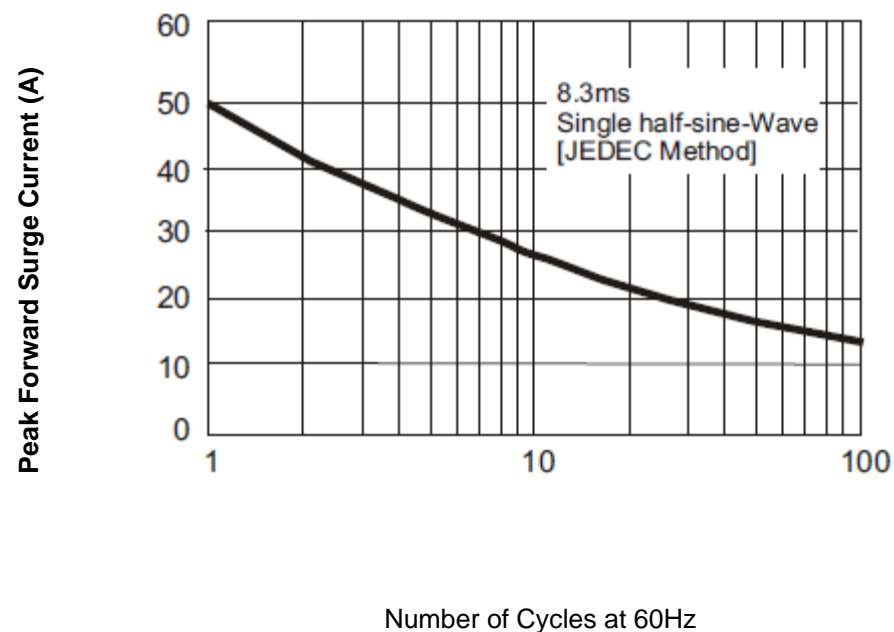


Rating & Characteristics Curves (TA=25°C unless otherwise noted)

Derating Curve for Output Rectified Current



Maximum NON Repetitive Forward Surge Current



Dual-Inline Bridge Rectifier 1,5A

EDCON-Ser. **E12008**

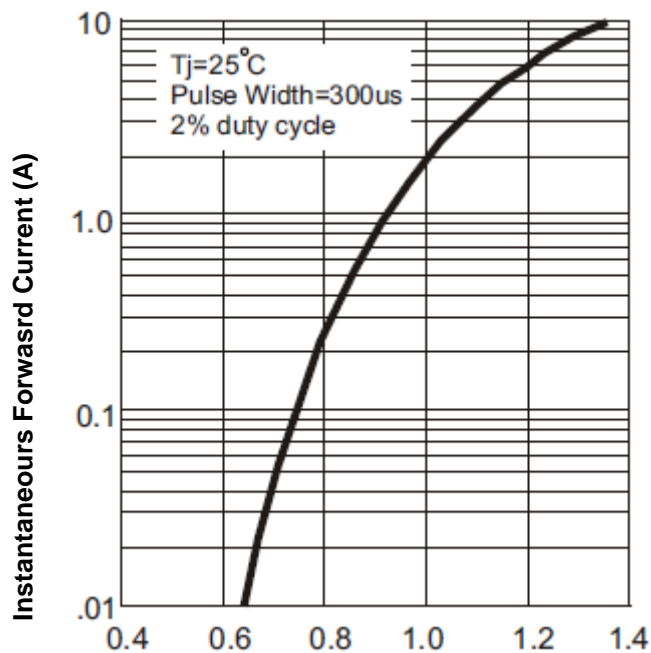
International Serie: **DB15xS**

DRW:	Jason	CHKD	Wilson	MATL:	Wilson	TOLERANCE	Mason	DATE	10.05.2010
APPD:	Schumi			FINISH	Jamy		Sheet No.	2 from 5	

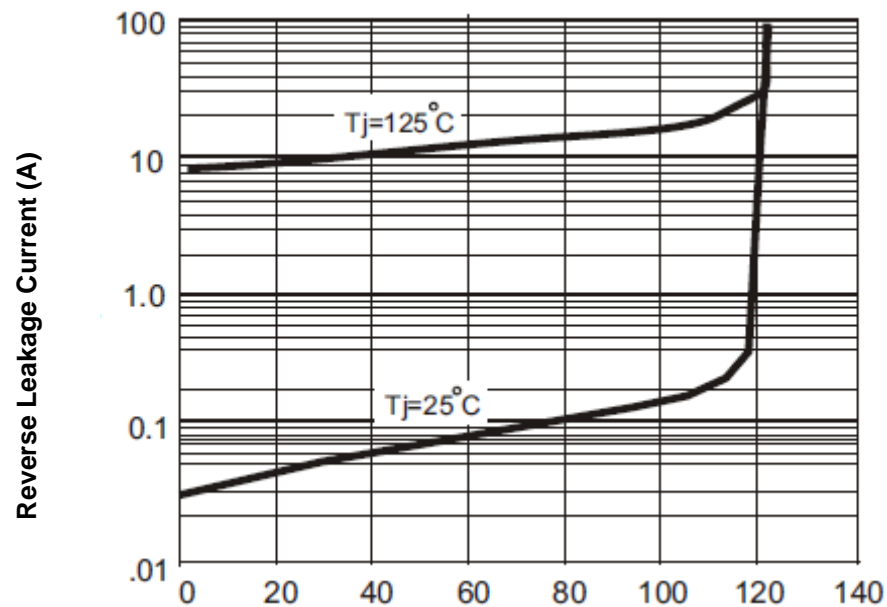


Rating & Characteristics Curves (TA=25°C unless otherwise noted)

Typical Forward Characteristics



Typical Reverse Characteristics



Forward Voltage (V)

Percentage of peak Reverse Voltage (%)

Dual-Inline Bridge Rectifier 1,5A

EDCON-Ser. **E12008**

International Serie: **DB15xS**

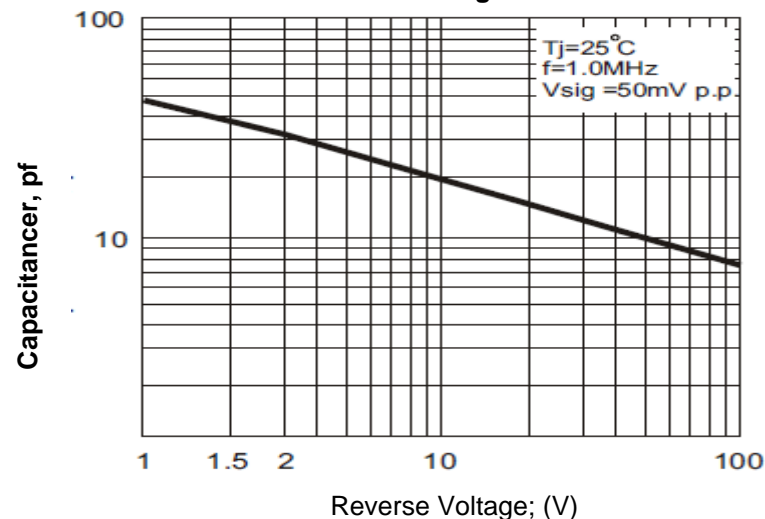
DRW:	Jason	CHKD	Wilson	MATL:	Wilson	TOLERANCE	Mason	DATE	10.05.2010
APPD:	Schumi			FINISH	Jamy		Sheet No.	3 from 5	

EDCON-COMPONENTS



Rating & Characteristics Curves (TA=25°C unless otherwise noted)

Forward Current Derating Curve



Ordering Informations

EDCON Serie	International Type	NO function	ROHS	Package					
-------------	--------------------	-------------	------	---------	--	--	--	--	--

E12008	DB15xS	XX	R	TR					
---------------	---------------	-----------	----------	-----------	--	--	--	--	--

Look Voltage Code Table		R= ROHS Conform	TR= Tape Reel
		N= NON ROHS Conform	TU= Tube Packing

Dual-Inline Bridge Rectifier 1,5A	
EDCON-Ser.	E12008
International Serie:	DB15xS

DRW:	Jason	CHKD	Wilson	MATL:	Wilson	TOLERANCE	Mason	DATE	10.05.2010
APPD:	Schumi			FINISH	Jamy		Sheet No.		4 from 5

www.edcon-components.com

email: info@edcon-components.com



Soldering Profile Curve

Classification Reflow Profile (JEDEC J-STD-020C)



Dual-Inline Bridge Rectifier 1,5A	
EDCON-Ser.	E12008
International Serie:	DB15xS

DRW:	Jason	CHKD	Wilson	MATL:	Wilson	TOLERANCE	Mason	DATE	10.05.2010
APPD:	Schumi			FINISH	Jamy		Sheet No.	5 from 5	