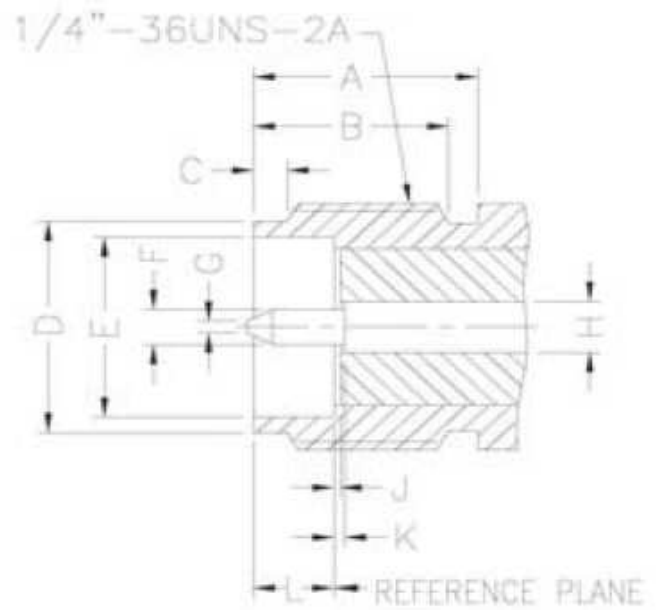
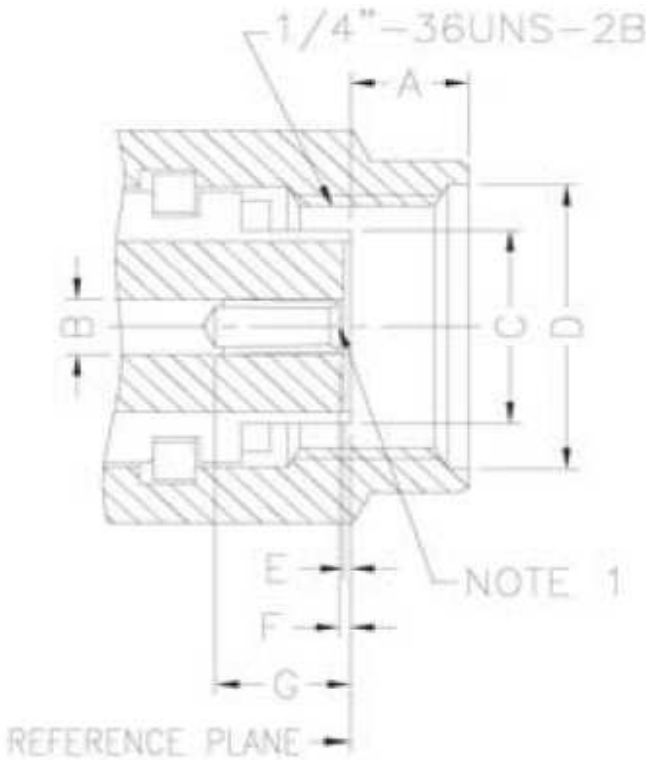




General

Reverse Polarity connectors are designed for using in spread spectrum wireless applications which a non-standard interface is needed.

INTERFACE MATING DIMENSIONS



| Plug | | |
|--------|------|------|
| Letter | mm | |
| | min. | max. |
| A | 2.54 | 3.43 |
| B | 1.24 | 1.30 |
| C | 4.53 | 4.59 |
| D | 6.35 | 6.73 |
| E | 0.00 | 0.25 |
| F | 0.00 | 0.25 |
| G | 2.92 | --- |

| Jack | | |
|--------|------|------|
| Letter | mm | |
| | min. | max. |
| A | 5.54 | --- |
| B | 4.32 | --- |
| C | 0.38 | 1.14 |
| D | 5.28 | 5.49 |
| E | 4.60 | 4.67 |
| F | 0.90 | 0.94 |
| G | 0.00 | 0.38 |
| H | 1.24 | 1.30 |
| J | 0.00 | 0.25 |
| K | 0.00 | 0.25 |
| L | 1.88 | 1.98 |

Note: I.D. to meet VSWR and Contact Resistance when mated with 0.90/0.94 mm dia. pin.

| | |
|--|-----------------|
| PCB Mount Jack SMA Reverse Polarity | |
| Part No.: | T55U1026 |
| Customer: | |

| | | | | | | | |
|-------|------|------|-------|--------|------|-------|------------|
| DRW: | Dong | CHKD | Chang | MATL: | Chui | DATE | 04.12.2009 |
| APPD: | Ping | | | FINISH | Hui | Sheet | 1 from 3 |



Specifications

| <i>Electrical</i> | | |
|---------------------------------|---------------------------------|---|
| Impedance | | 50 Ω |
| Frequency Range | | 0 - 12.4 GHz on Flexible cable 0 - 18 GHz on Semi-rigid cable |
| Working Voltage | | RG-178 : 170 VRMS max. RG-316, .085" : 250 VRMS max. RG-142, .141" : 335 VRMS max. |
| Dielectric Withstanding Voltage | | RG-178 : 500 VRMS max. RG-316, .085" : 750 VRMS max. RG-142, .141" : 1000 VRMS max. |
| VSWR | Straight Right Angle | 1.3 max. 1.5 max. |
| Contact Resistance | Center Contact Outer Contact | 6 mΩ max. 3 mΩ max. |
| Insulator Resistance | | 1000 MΩ min. |

| <i>Material</i> | | |
|-------------------|--|--|
| Parts Name | Material | Finish |
| Body, Metal Parts | Brass per QQ-B-626 | Gold 3 micro-inches |
| Center Contacts | Male: Brass per QQ-B-626 Female: Beryllium copper per QQ-C-530 | Gold 30 micro-inches Gold 30 micro-inches |
| Insulators | Teflon | None |
| Crimp Ferrules | Annealed Brass | Gold 3 micro-inches |
| Clamp Gaskets | Silicone rubber | None |

| <i>Mechanical & Environmental</i> | |
|---------------------------------------|-------------------------------------|
| Engagement Force | 16 in-ozs. max. |
| Disengagement Force | 16 in-ozs. max. |
| Coupling Nut Retention | 35 lbs. min. |
| Coupling Proof Torque | 100 in-ozs. min. |
| Contact Retention | 4 lbs. min. |
| Durability (Mating) | 500 cycles |
| Temperature Range | -65°C ~ 165°C |
| Vibration | MIL-STD-202 Method 204 Test Cond. B |
| Salt Spray | MIL-STD-202 Method 101 Test Cond. B |
| Thermal Shock | MIL-STD-202 Method 107 Test Cond. B |

**PCB Mount Jack
 SMA Reverse Polarity**

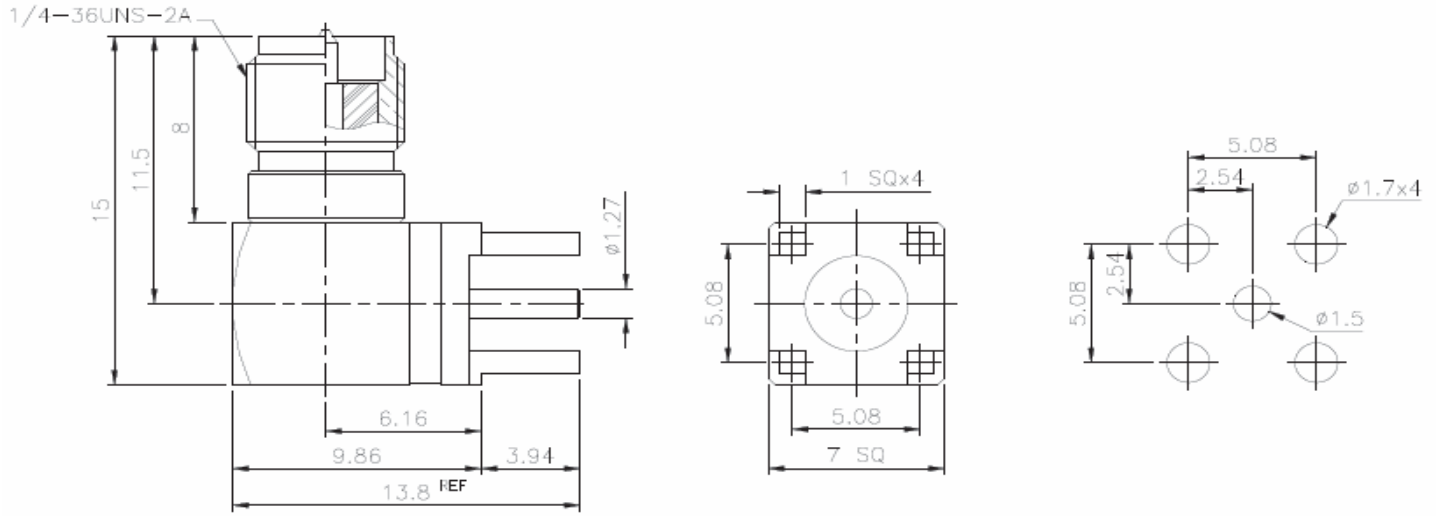
Part No.: **T55U1026**

Customer:

| | | | | | | | | |
|-------|------|------|-------|--|--------|------|-------|------------|
| DRW: | Dong | CHKD | Chang | | MATL: | Chui | DATE | 04.12.2009 |
| APPD: | Ping | | | | FINISH | Hui | Sheet | 2 from 3 |



Technical Drawing



Odering Information

| Serie | - | Cable Group | Impedance | No Function | RoHS | Packing |
|-------------|---|-----------------------|-----------------|-------------|---|---|
| T55U1026 | - | G5 | 50 | XX | R | BU |
| EDCON-Serie | - | G5 = Blunt Post | 50 = 50 Ω | XX | N = no RoHS conform R = RoHS conform | BU = Bulk Ware IV = Individual Packing |

**PCB Mount Jack
SMA Reverse Polarity**

Part No.: **T55U1026**

Customer:

| | | | | | | | |
|-------|------|------|-------|--------|------|-------|------------|
| DRW: | Dong | CHKD | Chang | MATL: | Chui | DATE | 04.12.2009 |
| APPD: | Ping | | | FINISH | Hui | Sheet | 3 from 3 |