



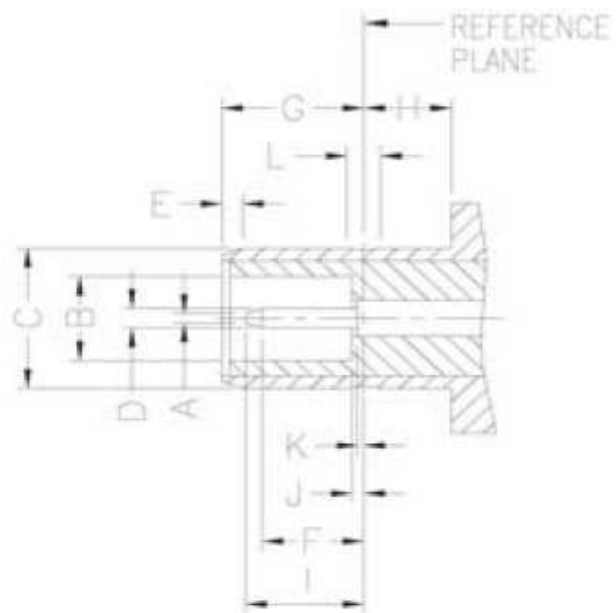
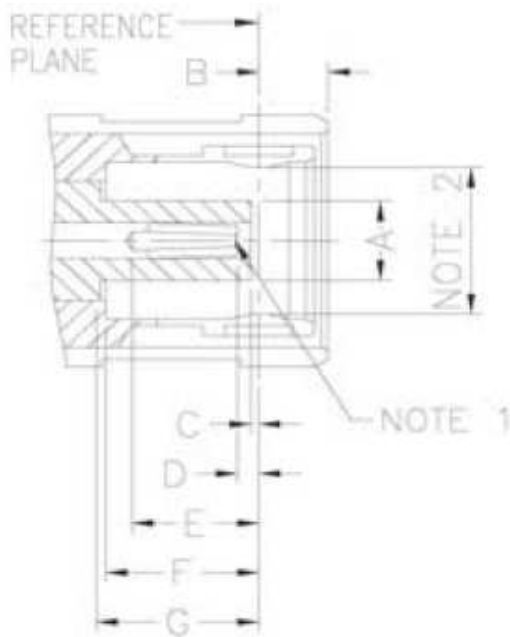
**General**

SMB series are semi-precision and subminiature devices that provide repeatable electrical performance to 4 GHz.

SMB family of connectors provides a mean of quick connect / disconnect through a snap-on type coupling.

SMB connectors are popularly used in telecommunications, test equipment and instrumentation.

**INTERFACE MATING DIMENSIONS**



| Plug   |      |      |
|--------|------|------|
| Letter | mm   |      |
|        | min. | max. |
| A      | 2.00 | 2.06 |
| B      | ---  | 1.62 |
| C      | 0.18 | ---  |
| D      | 0.18 | 0.94 |
| E      | 2.97 | ---  |
| F      | 3.58 | ---  |
| G      | 3.58 | ---  |

| Jack   |      |      |
|--------|------|------|
| Letter | mm   |      |
|        | min. | max. |
| A      | ---  | 0.25 |
| B      | 2.08 | 2.16 |
| C      | 3.66 | 3.71 |
| D      | 0.48 | 0.53 |
| E      | 0.00 | ---  |
| F      | 1.32 | ---  |
| G      | 3.33 | 3.58 |
| H      | 2.03 | ---  |
| I      | ---  | 2.97 |
| J      | ---  | 0.18 |
| K      | ---  | 0.18 |
| L      | 0.69 | 0.94 |

**Note:** I.D. to meet VSWR and Contact Resistance when mated with 0.48/0.53 mm dia. pin.

|                            |                 |
|----------------------------|-----------------|
| <b>Cable Crimp<br/>SMB</b> |                 |
| Part No.:                  | <b>T55K1023</b> |
| Customer:                  |                 |

|       |      |      |       |        |      |       |            |
|-------|------|------|-------|--------|------|-------|------------|
| DRW:  | Dong | CHKD | Chang | MATL:  | Chui | DATE  | 16.08.2010 |
| APPD: | Ping |      |       | FINISH | Hui  | Sheet | 1 from 3   |



**Specifications**

| <i>Electrical</i>               |                                 |  |
|---------------------------------|---------------------------------|--|
| Impedance                       |                                 | 50 Ω   |
| Frequency Range                 |                                 | 0 - 4 GHz  |
| Working Voltage                 |                                 | RG-178: 250 VRMS max.<br>RG-316, .085": 335 VRMS max.  |
| Dielectric Withstanding Voltage |                                 | RG-178: 750 VRMS min.<br>RG-316, .085": 1000 VRMS min. |
| VSWR                            | Straight<br>Right Angle         | 1.3 max.<br>1.5 max.                                   |
| Contact Resistance              | Center Contact<br>Outer Contact | 6 mΩ max.<br>2.5 mΩ max.                               |
| Insulator Resistance            |                                 | 1000 MΩ min.   |

| <i>Material</i>   |  |  |
|-------------------|--|--|
| Parts Name        | Material   | Finish                                       |
| Body, Metal Parts | Brass per QQ-B-626   | Gold 3 micro-inches                          |
| Center Contacts   | Male: Brass per QQ-B-626<br>Female: Beryllium copper<br>per QQ-C-530 | Gold 30 micro-inches<br>Gold 30 micro-inches |
| Insulators        | Teflon   | None   |
| Crimp Ferrules    | Annealed Brass   | Gold 3 micro-inches                          |

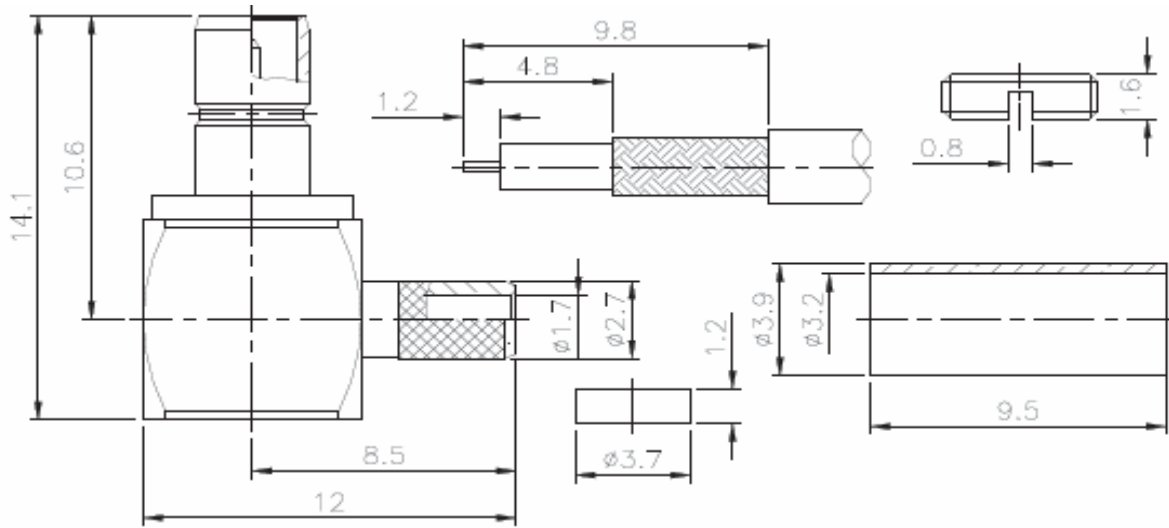
| <i>Mechanical &amp; Environmental</i> |                                     |
|---------------------------------------|-------------------------------------|
| Engagement Force                      | 14 lbs. max.                        |
| Disengagement Force                   | 4 lbs. max.                         |
| Durability (Mating)                   | 500 cycles                          |
| Temperature Range                     | -65°C ~ 155°C                       |
| Vibration                             | MIL-STD-202 Method 204 Test Cond. B |
| Salt Spray                            | MIL-STD-202 Method 101 Test Cond. B |
| Thermal Shock                         | MIL-STD-202 Method 107 Test Cond. B |

|                            |                 |
|----------------------------|-----------------|
| <b>Cable Crimp<br/>SMB</b> |                 |
| Part No.:                  | <b>T55K1023</b> |
| Customer:                  |                 |

|       |      |      |       |        |      |       |            |
|-------|------|------|-------|--------|------|-------|------------|
| DRW:  | Dong | CHKD | Chang | MATL:  | Chui | DATE  | 16.08.2010 |
| APPD: | Ping |      |       | FINISH | Hui  | Sheet | 2 from 3   |



**Technical Drawing**



**Ordering Information**

| Serie           | - | Cable Group                                  | Impedance              | No Function | RoHS  | Packing  |
|-----------------|---|--|------------------------|-------------|---|--|
| <b>T55K1023</b> | - | <b>G7</b>                                    | <b>50</b>              | <b>XX</b>   | <b>R</b>  | <b>BU</b>  |
| EDCON-Serie     | - | <b>G7</b><br>=<br>RG-179/U, 187A/U,<br>B9221 | <b>50</b><br>=<br>50 Ω | XX          | <b>N</b><br>=<br>no RoHS<br>conform<br><b>R</b><br>=<br>RoHS<br>conform | <b>BU</b><br>=<br>Bulk Ware<br><b>IV</b><br>=<br>Individual<br>Packing |

|                            |                 |
|----------------------------|-----------------|
| <b>Cable Crimp<br/>SMB</b> |                 |
| Part No.:                  | <b>T55K1023</b> |
| Customer:                  |                 |

|       |      |      |       |        |      |       |            |
|-------|------|------|-------|--------|------|-------|------------|
| DRW:  | Dong | CHKD | Chang | MATL:  | Chui | DATE  | 16.08.2010 |
| APPD: | Ping |      |       | FINISH | Hui  | Sheet | 3 from 3   |