



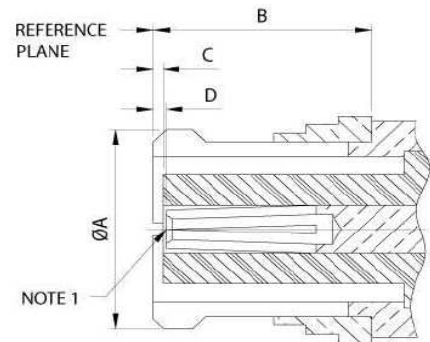
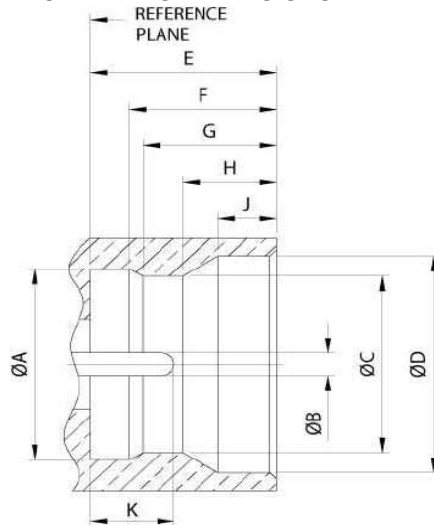
**General**

EDCON develops SMP series to fulfill customer's demands for higher-frequency and miniaturized connectors. These are easy snap-on connectors; Operatable up to 40GHz.

These SMP connectors are ideal for board to board interconnections by joining plugs on different boards with a jack-to-jack adaptor in between.

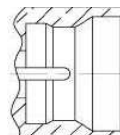
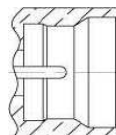
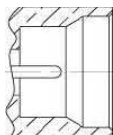
SMP interface provides three different levels of retention force: full detent, limited detent, and smooth bore. Full detent is often used for connections with highest retention, limited detent is only for retaining the bullet, and smooth bore is for the lowest retention.

**INTERFACE MATING DIMENSIONS**



| Letter | Plug        |       |                |       |             |       |
|--------|-------------|-------|----------------|-------|-------------|-------|
|        | mm          |       | mm             |       | mm          |       |
|        | Smooth Bore |       | Limited Detent |       | Full Detent |       |
|        | min.        | max.  | min.           | max.  | min.        | max.  |
| A      | 3.125       | 3.225 | 3.125          | 3.225 | 3.125       | 3.225 |
| B      | 0.356       | 0.406 | 0.356          | 0.406 | 0.356       | 0.406 |
| C      | 3.125       | 3.225 | 2.998          | 3.098 | 2.896       | 2.996 |
| D      | 3.531       | 3.683 | 3.531          | 3.683 | 3.531       | 3.683 |
| E      | 2.784       | 2.884 | 2.784          | 2.884 | 2.784       | 2.884 |
| F      | ---         | ---   | 2.185          | 2.285 | 2.185       | 2.285 |
| G      | ---         | ---   | 1.982          | 2.082 | 1.982       | 2.082 |
| H      | 1.397       | 1.447 | 1.397          | 1.447 | 1.397       | 1.447 |
| J      | 0.839       | 0.939 | 0.839          | 0.939 | 0.839       | 0.939 |
| K      | 1.143       | 1.397 | 1.143          | 1.397 | 1.143       | 1.397 |

| Letter | mm   |      |
|--------|------|------|
|        | min. | max. |
| A      | ---  | 3.34 |
| B      | 3.35 | ---  |
| C      | 0.00 | 0.20 |
| D      | 0.00 | ---  |



**Adaptor  
SMP**

Part No.: **T55B1013**

Customer:

|       |      |      |       |         |      |       |            |
|-------|------|------|-------|---------|------|-------|------------|
| DRW:  | Dong | CHKD | Chang | MATL:   | Chui | DATE  | 26.04.2009 |
| APPD: | Ping |      |       | FINISH: | Hui  | Sheet | 1 from 4   |



**Specifications**

| Electrical                      |   |  |
|---------------------------------|---|--|
| Impedance                       |   | 50 Ω   |
| Frequency                       | Bullet Adapter (6.45mm Length)<br>Semi-Rigid Straight Connectors              | 0 - 40 GHz   |
|                                 | All Other In-Series Adaptors, End Launch<br>Semi-Rigid Right Angle Connectors | 0 - 12 GHz   |
|                                 | PCB Mount   | 0 - 12 GHz   |
| Working Voltage                 |   | 335 VRMS   |
| Dielectric Withstanding Voltage |   | 500 VRMS   |
| VSWR                            | Bullet Adapter (6.45mm Length)  | 1.3 max. 0 - 26.5 GHz<br>1.5 max. 26.5 - 40 GHz                          |
|                                 | Semi-Rigid Straight Connectors  | 1.2 max. 0 - 18 GHz<br>1.35 max. 18 - 26.5 GHz<br>1.7 max. 26.5 - 40 GHz |
|                                 | All Other In-Series Adaptors  | 1.1 max. 0 - 4 GHz<br>1.15 max. 4 - 12 GHz<br>1.2 max. 12 - 18 GHz       |
|                                 | Semi-Rigid Right Angle Connectors   | 1.2 max. 0 - 18 GHz  |
| Contact Resistance              | Center Contact  | 6 mΩ max.  |
|                                 | Outer Contact   | 2 mΩ max.  |
| Insulation Resistance           |   | 5 MΩ max.  |
| Insertion loss                  | In-Series Adaptors  | 0.1 √F dB max. / 10 GHz  |

| Material          |  |  |
|-------------------|--|--|
| Parts Name        | Material   | Finish                                       |
| Body, Metal Parts | Brass per QQ-B-626   | Gold 3 micro-inches                          |
| Center Contacts   | Male: Brass per QQ-B-626<br>Female: Berylium copper per QQ-C-530 | Gold 30 micro-inches<br>Gold 30 micro-inches |
| Insulators        | Teflon   | None   |
| Crimp Ferrules    | Annealed Brass   | Gold 3 micro-inches                          |

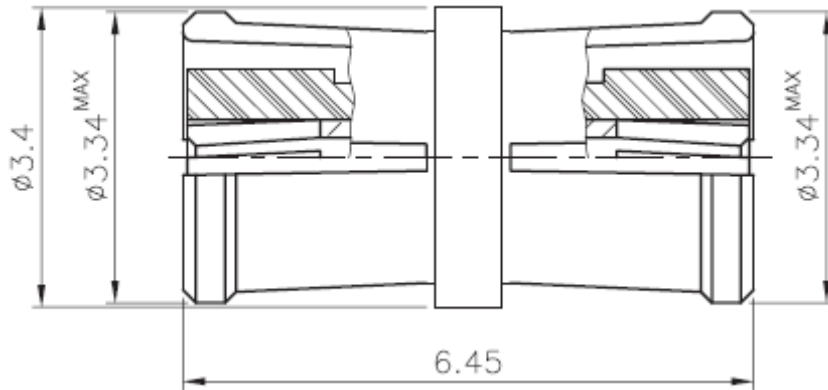
|                        |                 |
|------------------------|-----------------|
| <b>Adaptor<br/>SMP</b> |                 |
| Part No.:              | <b>T55B1013</b> |
| Customer:              |                 |

|       |      |      |       |         |      |       |            |
|-------|------|------|-------|---------|------|-------|------------|
| DRW:  | Dong | CHKD | Chang | MATL:   | Chui | DATE  | 26.04.2009 |
| APPD: | Ping |      |       | FINISH: | Hui  | Sheet | 2 from 4   |



| <b>Mechanical &amp; Environmental</b> |  |
|---------------------------------------|--|
| Engagement Force                      | Full Detent: 45 N max.<br>Limited Detent: 22 N max.<br>Smooth Bore: 9 N max.                     |
| Disengagement Force                   | Full Detent: 9 N max.<br>Limited Detent: 7 N max.<br>Smooth Bore: 2 N max.                       |
| Contact Retention                     | 7 N min.   |
| Durability (Mating)                   | Full Detent: 100 cycles min.<br>Limited Detent: 500 cycles min.<br>Smooth Bore: 1000 cycles min. |
| Temperature Range                     | -65°C ~ 155°C  |
| Vibration                             | MIL-STD-202 Method 204, Cond. B  |
| Temperature Shock                     | MIL-STD-202 Method 107, Cond. B  |
| Moisture Resistance                   | MIL-STD-202 Method 106   |
| Mechanical Shock                      | MIL-STD-202 Method 213, Cond. A  |

**Technical Drawing**



|                        |                 |
|------------------------|-----------------|
| <b>Adaptor<br/>SMP</b> |                 |
| Part No.:              | <b>T55B1013</b> |
| Customer:              |                 |

|       |      |      |       |         |      |       |            |
|-------|------|------|-------|---------|------|-------|------------|
| DRW:  | Dong | CHKD | Chang | MATL:   | Chui | DATE  | 26.04.2009 |
| APPD: | Ping |      |       | FINISH: | Hui  | Sheet | 3 from 4   |



**Odering Information**

| Serie           | - | Cable Group              | Impedance              | No Function | RoHS  | Packing   |
|-----------------|---|--------------------------|------------------------|-------------|---|---|
| <b>T55B1013</b> | - | <b>G4</b>                | <b>50</b>              | <b>XX</b>   | <b>R</b>  | <b>BU</b>   |
| EDCON-Serie     | - | <b>G4</b><br>=<br>Others | <b>50</b><br>=<br>50 Ω | XX          | <b>N</b><br>=<br>no RoHS conform<br><b>R</b><br>=<br>RoHS conform | <b>BU</b><br>=<br>Bulk Ware<br><b>IV</b><br>=<br>Individual Packing |

|                        |                 |
|------------------------|-----------------|
| <b>Adaptor<br/>SMP</b> |                 |
| Part No.:              | <b>T55B1013</b> |
| Customer:              |                 |

|       |      |      |       |         |      |       |            |
|-------|------|------|-------|---------|------|-------|------------|
| DRW:  | Dong | CHKD | Chang | MATL:   | Chui | DATE  | 26.04.2009 |
| APPD: | Ping |      |       | FINISH: | Hui  | Sheet | 4 from 4   |