



General

PAL connectors are developed for use on Phase Alternate Line TV antenna receiving equipment.

Countries using the PAL system include: Australia, Austria, Belgium, China, Denmark, Finland, Germany, Great Britain, Honk Kong, Italy, Kuwait, Netherlands, New Zealand, Norway, Portugal, Singapore, Spain, Sweden, Switzerland and Thailand.

Specifications

| <i>Electrical</i> | | |
|---------------------------------|---------------------------------|------------------------|
| Impedance | 75 Ω | |
| Frequency Range | 0 - 1 GHz | |
| Working Voltage | 500 VRMS max. | |
| Dielectric Withstanding Voltage | 1500 VRMS max. | |
| VSWR | Straight Right Angle | Not defined |
| Contact Resistance | Center Contact Outer Contact | 5 mΩ max. 2 mΩ max. |
| Insulator Resistance | 5000 MΩ min. | |

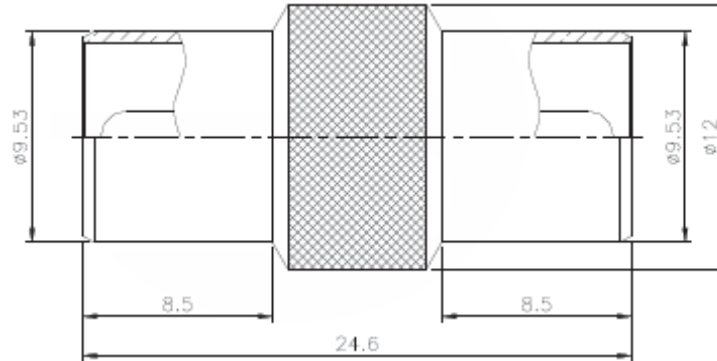
| <i>Material</i> | | |
|-------------------|---------------------------------------------------------------|--------------------------------------------------|
| Parts Name | Material | Finish |
| Body, Metal Parts | Brass per QQ-B-626 | Nickel 70 micro-inches |
| Center Contacts | Male: Brass per QQ-B-626 Female: Brass per per QQ-B-626 | Nickel 70 micro-inches Nickel 70 micro-inches |
| Insulators | Delrin | None |
| Crimp Ferrules | Annealed Brass | Nickel 70 micro-inches |

| | | |
|------------------------|-----------------|--|
| Adaptor PAL | | |
| Part No.: | T55A2012 | |
| Customer: | | |

| | | | | | | | |
|-------|------|------|-------|--------|------|-------|------------|
| DRW: | Dong | CHKD | Chang | MATL: | Chui | DATE | 17.08.2010 |
| APPD: | Ping | | | FINISH | Hui | Sheet | 1 from 2 |



Technical Drawing



Odering Information

| Serie | - | Cable Group | Impedance | No Function | RoHS | Packing |
|-----------------|---|-----------------------|---------------------|-------------|-------------------------------------------------------------|---------------------------------------------------------------|
| T55A2012 | - | G4 | 75 | XX | R | BU |
| EDCON-Serie | - | G4 = Others | 75 = 75 Ω | XX | N = no RoHS conform R = RoHS conform | BU = Bulk Ware IV = Individual Packing |

| | |
|------------------------|-----------------|
| Adaptor PAL | |
| Part No.: | T55A2012 |
| Customer: | |

| | | | | | | | |
|-------|------|------|-------|--------|------|-------|------------|
| DRW: | Dong | CHKD | Chang | MATL: | Chui | DATE | 17.08.2010 |
| APPD: | Ping | | | FINISH | Hui | Sheet | 2 from 2 |