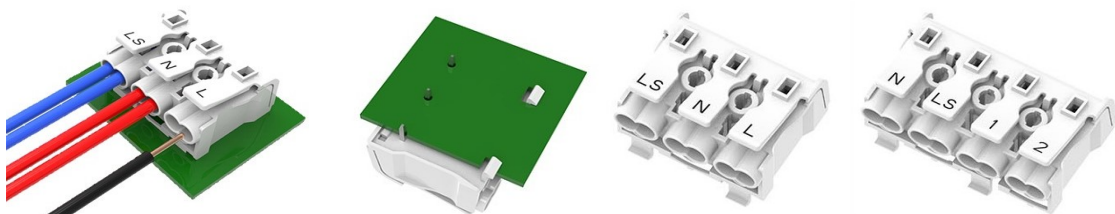


EDCON-COMPONENTS

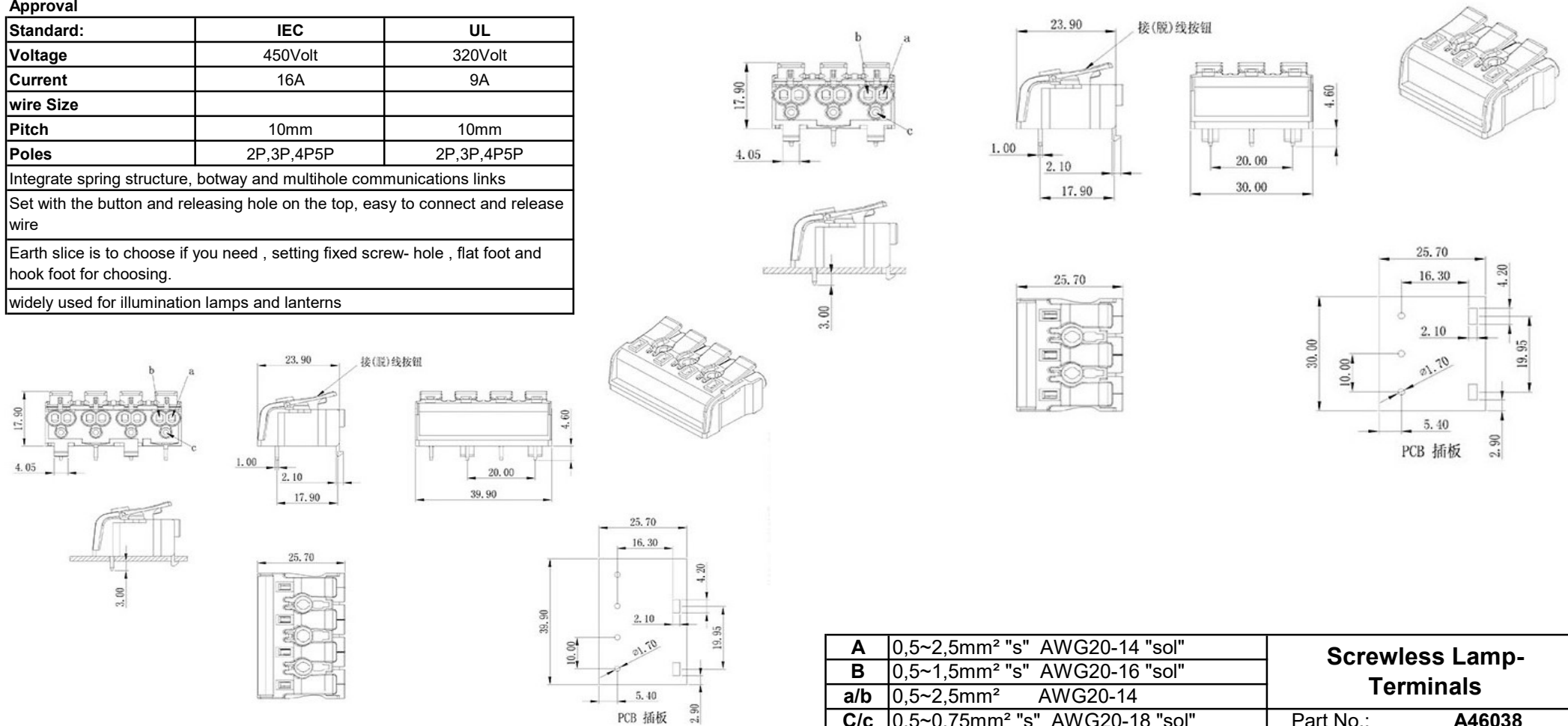


Description

Approval

Standard:	IEC	UL
Voltage	450Volt	320Volt
Current	16A	9A
wire Size		
Pitch	10mm	10mm
Poles	2P,3P,4P5P	2P,3P,4P5P
Integrate spring structure, botway and multihole communications links		
Set with the button and releasing hole on the top, easy to connect and release wire		
Earth slice is to choose if you need , setting fixed screw- hole , flat foot and hook foot for choosing.		
widely used for illumination lamps and lanterns		

Dimensions (mm)



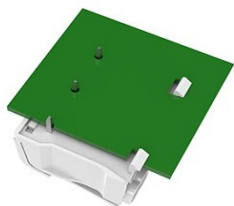
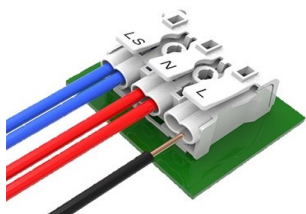
A	0,5~2,5mm ² "s" AWG20-14 "sol"	Screwless Lamp- Terminals
B	0,5~1,5mm ² "s" AWG20-16 "sol"	
a/b	0,5~2,5mm ² AWG20-14	Part No.: A46038
C/c	0,5~0,75mm ² "s" AWG20-18 "sol"	

DRW:	Jason	CHKD	Wilson	MATL:	Wilson	TOLERANCE	Mason	DATE	29.10.2023	Customer:
APPD:	Schumi			FINISH	Jamy		Sheet No.		1 from 2	

www.edcon-components.com

email: info@edcon-components.com

EDCON-COMPONENTS



Ordering Informations

Serie	No od Pos.	Body Colour	Special Function	Special Function	Special Function	ROHS	Packing	
A46038	03	LG	A	A	0	R	BU	

03= 3 Pos.	LG= Light Gray	A= with earth ground	A= with J Feed	0= No function	R= ROHS Conform	BU= Bulk - Ware into Polybag
		B= without earth ground	B= without J Feed		N= NON ROHS Conform	
					IV= Individual Packing	

Screwless Lamp-Terminals

Part No.: **A46038**

DRW:	Jason	CHKD	Wilson	MATL:	Wilson	TOLERANCE	Mason	DATE	29.10.2023	Customer:
APPD:	Schumi			FINISH	Jamy		Sheet No.	2 from 2		

www.edcon-components.com

email: info@edcon-components.com