

# EDCON-COMPONENTS

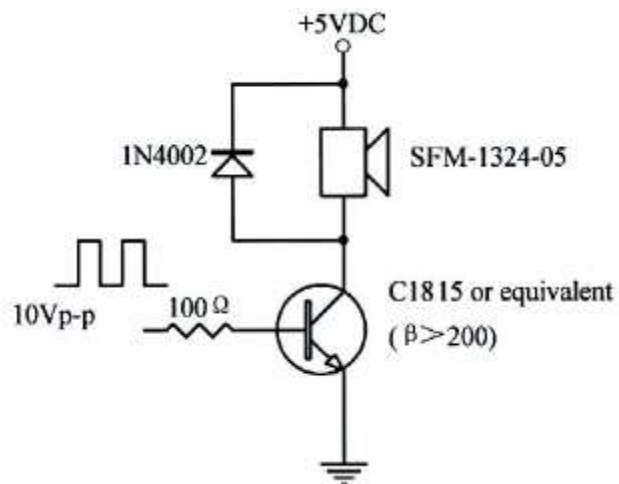


## Specifications

Min. Sound Pressure Level at 5V /10cm	85dB
Rated Voltage	5Volt
Operating Voltage	4~7Volt
Max. Consumption at 2,7KHz/7,2Vp.p. Square Wave	40mA/5Vdc
Resonant Frequency	2,4KHz
DC Resistance	45 +/-5Ω
Operating Temperature	. -40 ~ +85°C
Storage Temperature	. -40 ~ +85°C
Housing Material	PPS
Weight:	2,5gr.

This Label is removed after reflow soldering

## Test Circuit



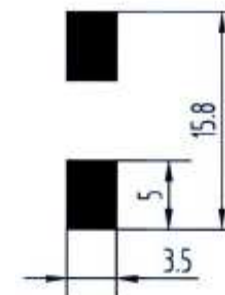
## Features

- Low Frequency
- Can Endure Reflow Solder Process
- Small and slim size
- Small Size item

## Applications

- Automatic Control Equipment
- Communication Equipment
- Electronic Equipments

## PCB Layout



**SMD Magnetic Transducer**

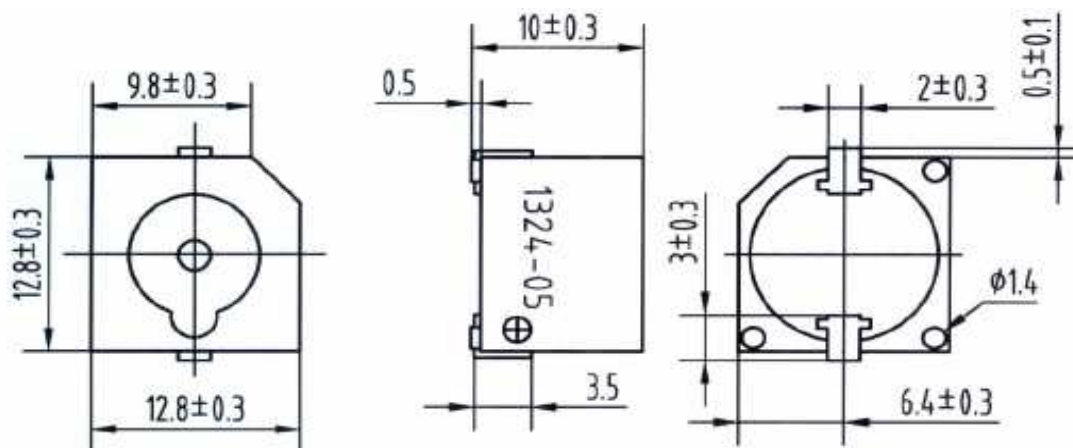
Part No.: **Y14031**

DRW:	Jason	CHKD	Wilson	MATL:	Wilson	TOLERANCE	Mason	DATE	10.06.2010	Customer:
APPD:	Schumi			FINISH	Jamy		Sheet No.	1 from 4		

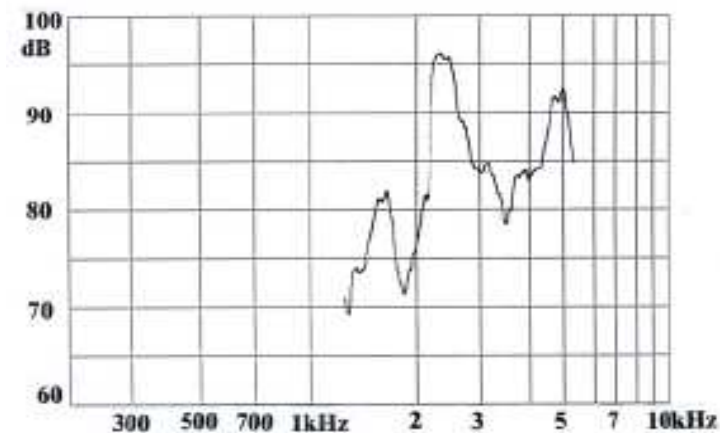
# EDCON-COMPONENTS



## Dimensions (mm)



## Characteristics



**SMD Magnetic Transducer**

Part No.: **Y14031**

DRW:	Jason	CHKD	Wilson	MATL:	Wilson	TOLERANCE	Mason	DATE	10.06.2010
APPD:	Schumi			FINISH	Jamy		Sheet No.	2 from 4	

Customer:

# EDCON-COMPONENTS



## Ordering Informations

Serie	Model-No.	ROHS	Package						
Y14031	132405	R	TY						

<b>R</b> = ROHS Conform	<b>TY</b> = Tray Packing
<b>N</b> = NON ROHS Conform	<b>TU</b> = Tube Packing
	<b>TR</b> = Tape Reel

**SMD Magnetic Transducer**

Part No.: **Y14031**

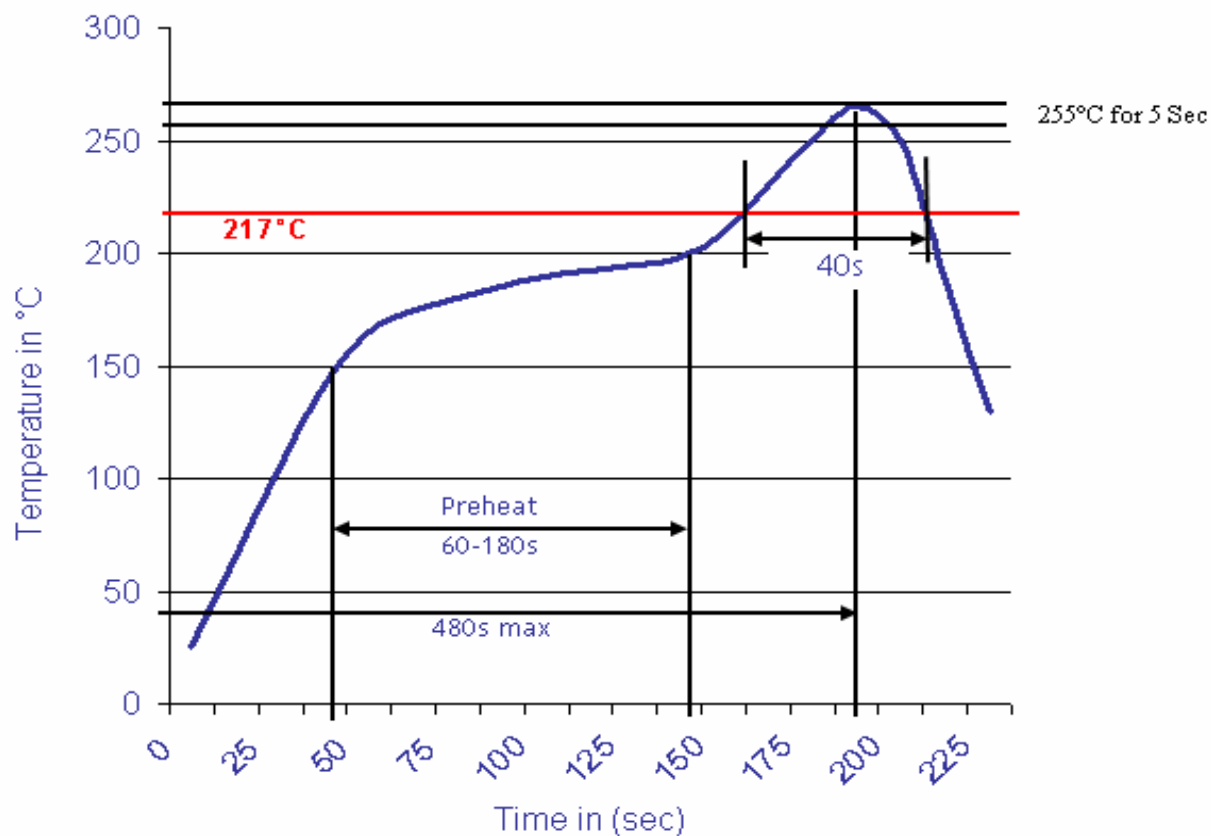
DRW:	Jason	CHKD	Wilson	MATL:	Wilson	TOLERANCE	Mason	DATE	10.06.2010
APPD:	Schumi			FINISH	Jamy		Sheet No.		3 from 4

Customer:



Soldering Profile Curve

Classification Reflow Profile (JEDEC J-STD-020C)



<b>SMD Magnetic Transducer</b>	
Part No.:	<b>Y14031</b>
Customer:	

DRW:	Jason	CHKD	Wilson	MATL:	Wilson	TOLERANCE	Mason	DATE	10.06.2010
APPD:	Schumi			FINISH	Jamy		Sheet No.	4 from 4	