

EDCON-COMPONENTS



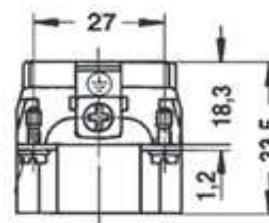
Contact



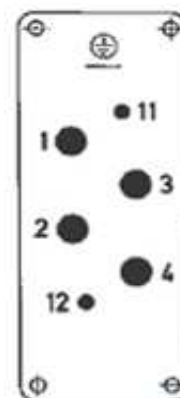
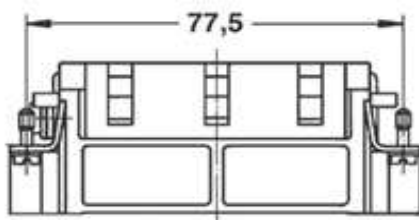
SPECIFICATION:

Working Current: 4x80A / 2x16A
 Working Voltage: 830V / 400V
 Rated Impulse Voltage: 8KV / 6KV
 Isolation Resistance: > 1010 Ohm
 Temperature Range: -40°C to + 125°C
 Flammability acc. VO (UL94)
 Cable Mounting: Crimp type

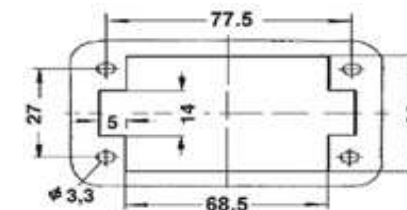
Technical Drawing



Distance to contact max. 21mm



Contact arrangement view from termination side



Panel cut out

Heavy Connector Serie HK-4/2

Part No.: **0965002**

Customer:

DRW:	Jason	CHKD	Wilson	MATL:	Wilson	TOLERANCE	Mason	DATE	10.08.2010
APPD:	Schumi			FINISH	Jamy		Sheet No.	1 from 2	

EDCON-COMPONENTS



Contact



Ordering Informations

Serie	Pos	Connecting	ROHS	Packing						
0965002	6	M	R	CA						

6= 6Pos.	M= Male	R= ROHS Conform	CA= Carton						
		N= NON ROHS Conform							

Heavy Connector Serie HK-4/2
Part No.: 0965002
Customer:

DRW:	Jason	CHKD	Wilson	MATL:	Wilson	TOLERANCE	Mason	DATE	10.08.2010
APPD:	Schumi			FINISH	Jamy		Sheet No.		2 from 2