

EDCON-COMPONENTS



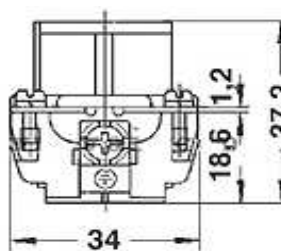
Contact



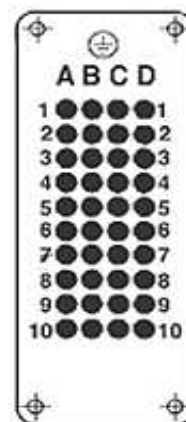
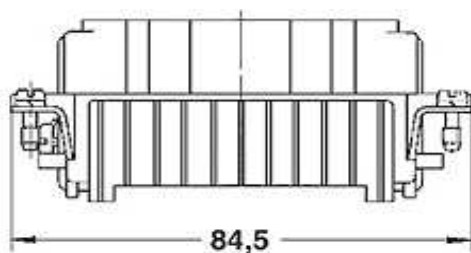
SPECIFICATION:

Working Current: 10A
 Working Voltage: 250V
 Rated Impulse Voltage: 4KV
 Isolation Resistance: > 1010 Ohm
 Temperature Range: -40°C to + 125°C
 Flammability acc. VO (UL94)
 Cable Mounting: Crimp

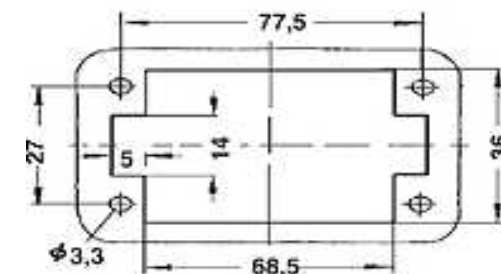
Technical Drawing



Distance to contact max. 21mm



Contact arrangement view from termination side



Panel cut out

Heavy Connector Serie HD-040

Part No.: **0934001**

Customer:

DRW:	Jason	CHKD	Wilson	MATL:	Wilson	TOLERANCE	Mason	DATE	10.08.2010
APPD:	Schumi			FINISH	Jamy		Sheet No.	1 from 2	

www.edcon-components.com

email: info@edcon-components.com

EDCON-COMPONENTS



Contact



Ordering Informations

Serie	Pos	Connecting	ROHS	Packing						
0934001	40	F	R	CA						

40= 40Pos.	F= Female	R= ROHS Conform	CA= Carton						
		N= NON ROHS Conform							

Heavy Connector Serie HD-040
Part No.: 0934001
Customer:

DRW:	Jason	CHKD	Wilson	MATL:	Wilson	TOLERANCE	Mason	DATE	10.08.2010
APPD:	Schumi			FINISH	Jamy			Sheet No.	2 from 2