

EDCON-COMPONENTS



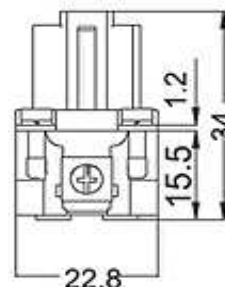
Contact



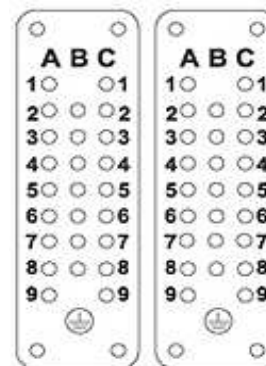
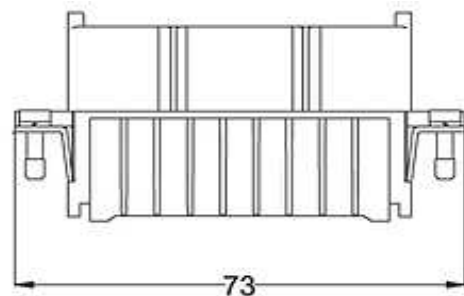
SPECIFICATION:

Working Current: 10A
 Working Voltage: 250V
 Rated Impulse Voltage: 4KV
 Isolation Resistance: > 1010 Ohm
 Temperature Range: -40°C to + 125°C
 Flammability acc. VO (UL94)
 Cable Mounting: Crimp

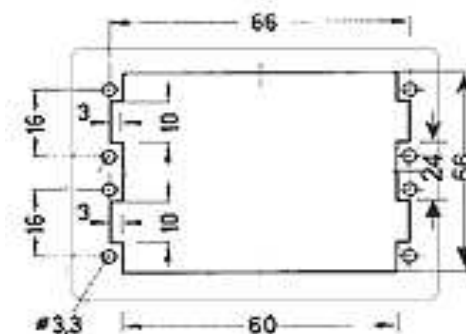
Technical Drawing



Distance to contact max. 24mm



Contact arrangement view from termination side



Panel cut out

Heavy Connector Serie HD-050
Part No.: 0933001
Customer:

DRW:	Jason	CHKD	Wilson	MATL:	Wilson	TOLERANCE	Mason	DATE	10.08.2010
APPD:	Schumi			FINISH	Jamy			Sheet No.	1 from 2

EDCON-COMPONENTS



Contact



Ordering Informations

Serie	Pos	Connecting	ROHS	Packing						
0933001	50	F	R	CA						

50= 50Pos.	F= Female	R= ROHS Conform	CA= Carton						
		N= NON ROHS Conform							

Heavy Connector Serie HD-050
Part No.: 0933001
Customer:

DRW:	Jason	CHKD	Wilson	MATL:	Wilson	TOLERANCE	Mason	DATE	10.08.2010
APPD:	Schumi			FINISH	Jamy		Sheet No.		2 from 2