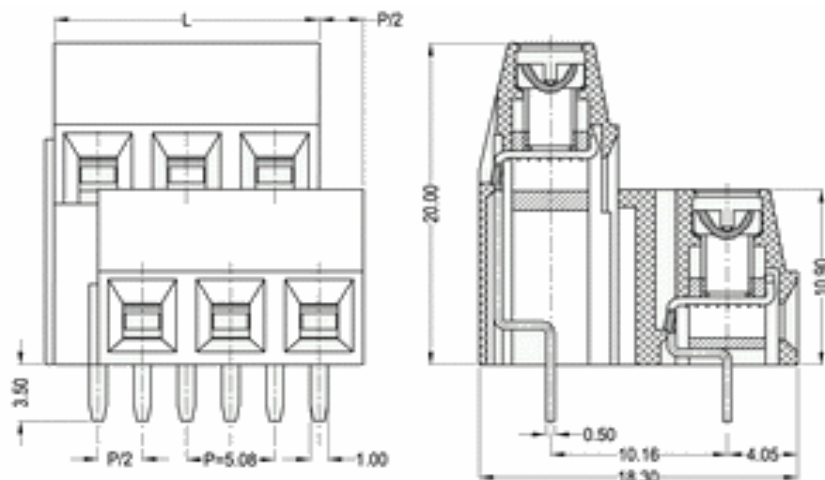




Drawing



P.C.B. Layout

Specifications

Electrical

Rated voltage	300V
Rated current	10A
Rated surge voltage	4000V
Wire range	30-14 AWG

Mechanical

Screw torque	5 lbf
Ambient temperature	-40°C ~ +105°C
Soldering temperature	250°C ±10°C/5 sec

Dimensions

Pitch	5.08mm
PCB holes diameter	Ø 1.3mm
Poles	2P - 3P

Material

Insulation body	PA66 (UL94,V-0)
Screw	M3, steel, zinc plated
Terminal body	Brass, Tin plated



Elevated Terminal Block /
Pitch 5.08mm

Part No.: **A13M001**

DRW:	Jason	CHKD	Wilson	MATL:	Wilson	TOLERANCE	Mason	DATE	14.07.2009
APPD:	Schumi			FINISH	Jamy		Sheet No.	1 from 3	

Customer:



Ordering Informations

Serie	-	No. of Pole	Body-Color	-	Customer Request
A13M001	-	XX	XX	-	X

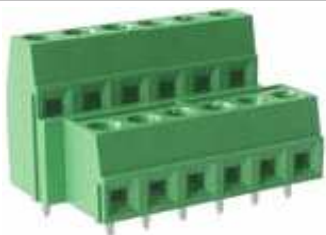
XX = total	WH - white
02	GN - green
03	GR - gray
	PG - Phoenix Green
	OR - orange
	BK - black
	BL - blue
	LG - light gray



Elevated Terminal Block /
Pitch 5.08mm

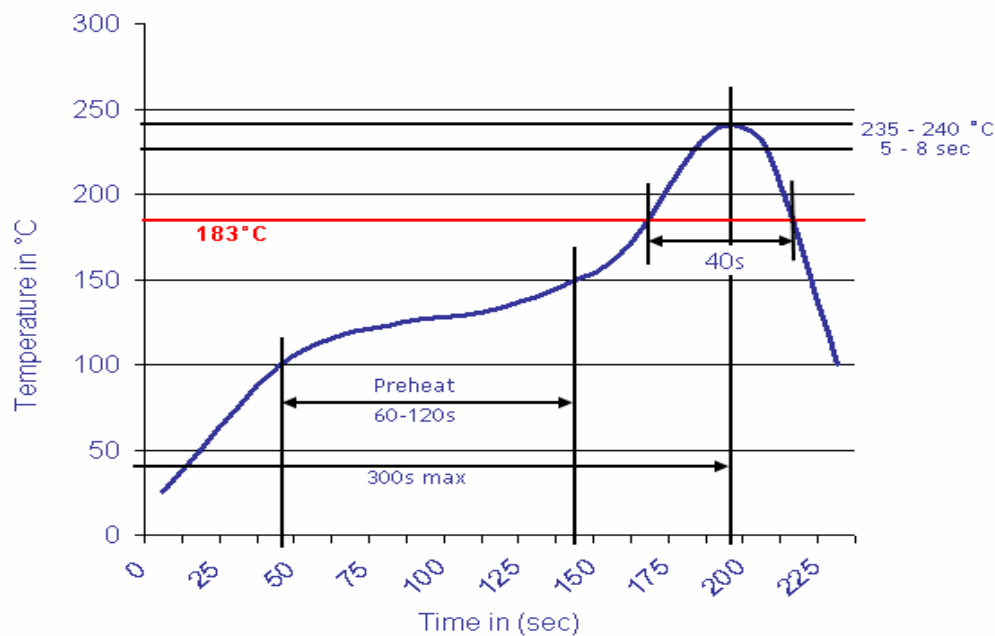
Part No.: **A13M001**

DRW:	Jason	CHKD	Wilson	MATL:	Wilson	TOLERANCE	Mason	DATE	14.07.2009	Customer:
APPD:	Schumi			FINISH	Jamy		Sheet No.	2 from 3		



Soldering - Profil

Classification Reflow Profile (JEDEC J-STD-020C)



Elevated Terminal Block /

Pitch 5.08mm

Part No.: **A13M001**

DRW:	Jason	CHKD	Wilson	MATL:	Wilson	TOLERANCE	Mason	DATE	14.07.2009
APPD:	Schumi			FINISH	Jamy		Sheet No.	3 from 3	

Customer:

email: info@edcon-components.com