



**Length Code**

Size Code	L	C	B	G1	G2	SW
A01	5,0	4,0	8,0	M4	M4	8
A02	6,0	4,0	8,0	M4	M4	8
A03	7,0	5,0	8,0	M4	M4	8
A04	8,0	5,0	8,0	M4	M4	8
A05	9,0	5,0	8,0	M4	M4	8
A06	10,0	7,0	8,0	M4	M4	8
A07	11,0	7,0	8,0	M4	M4	8
A08	12,0	9,0	8,0	M4	M4	8
A09	13,0	9,0	8,0	M4	M4	8
A10	14,0	9,0	8,0	M4	M4	8
A11	15,0	10,0	8,0	M4	M4	8
A12	16,0	10,0	8,0	M4	M4	8
A13	17,0	10,0	8,0	M4	M4	8
A14	18,0	10,0	8,0	M4	M4	8
A15	19,0	10,0	8,0	M4	M4	8
A16	20,0	10,0	8,0	M4	M4	8
A17	21,0	10,0	8,0	M4	M4	8
A18	22,0	10,0	8,0	M4	M4	8
A19	23,0	10,0	8,0	M4	M4	8
A20	24,0	10,0	8,0	M4	M4	8
A21	25,0	10,0	8,0	M4	M4	8
A22	26,0	10,0	8,0	M4	M4	8
A23	27,0	10,0	8,0	M4	M4	8
A24	28,0	10,0	8,0	M4	M4	8
A25	29,0	10,0	8,0	M4	M4	8
A26	30,0	10,0	8,0	M4	M4	8
A27	31,0	10,0	8,0	M4	M4	8
A28	32,0	10,0	8,0	M4	M4	8
A29	33,0	10,0	8,0	M4	M4	8
A30	34,0	10,0	8,0	M4	M4	8
A31	35,0	10,0	8,0	M4	M4	8
A32	36,0	10,0	8,0	M4	M4	8
A33	37,0	10,0	8,0	M4	M4	8
A34	38,0	10,0	8,0	M4	M4	8
A35	39,0	10,0	8,0	M4	M4	8
A36	40,0	10,0	8,0	M4	M4	8
A37	41,0	10,0	8,0	M4	M4	8
A38	42,0	10,0	8,0	M4	M4	8
A39	43,0	10,0	8,0	M4	M4	8
A40	44,0	10,0	8,0	M4	M4	8
A41	45,0	10,0	8,0	M4	M4	8

Hexagonal spacer M4

Part No.: **N14129**

Customer:

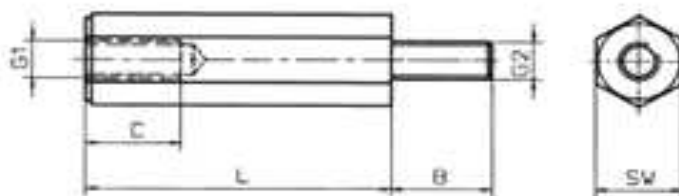
DRW:	Jason	CHKD	Jules	MATL:	Wu	DATE	15.12.2011
APPD:	Join			FINISH	Shieh	Sheet	1 from 2



**Technical Description**

**Material** Polyamid GV Black  
**Tolerance of Length:** 0,10mm

**Technical Drawing**



**Ordering Information**

Serie	L-Size Code	Material	Color	ROHS	Packing	
-------	-------------	----------	-------	------	---------	--

<b>N14129</b>	<b>A01</b>	<b>PM</b>	<b>BK</b>	<b>R</b>	<b>BU</b>	
---------------	------------	-----------	-----------	----------	-----------	--

<b>A01=</b> Size Code	<b>PM=</b> Polyamid	<b>BK=</b> Black	<b>R=</b> Rohs Conform	<b>BU=</b> Bulk-Ware
-----------------------	---------------------	------------------	------------------------	----------------------

<b>Hexagonal spacer M4</b>	
Part No.:	<b>N14129</b>
Customer:	

DRW:	Jason	CHKD	Jules	MATL:	Wu	DATE	15.12.2011
APPD:	Join			FINISH	Shieh	Sheet	2 from 2