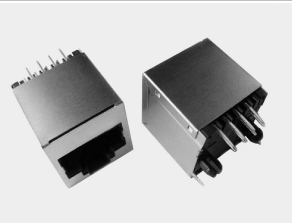


EDCON-COMPONENTS



Technical Discription

Electrical

Current Rating: 1,5A
 Voltage Rating: 125VAC
 Insulation Resistance: 500M Ω min.
 Contact Resistance: 30M Ω max.
 Withstanding Voltage: AC1000V RMS 50/60Hz 1min.

Mechanical

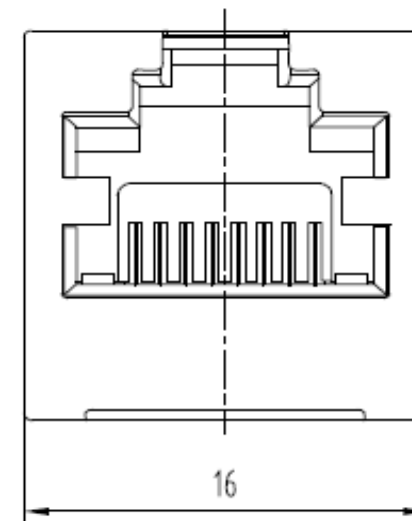
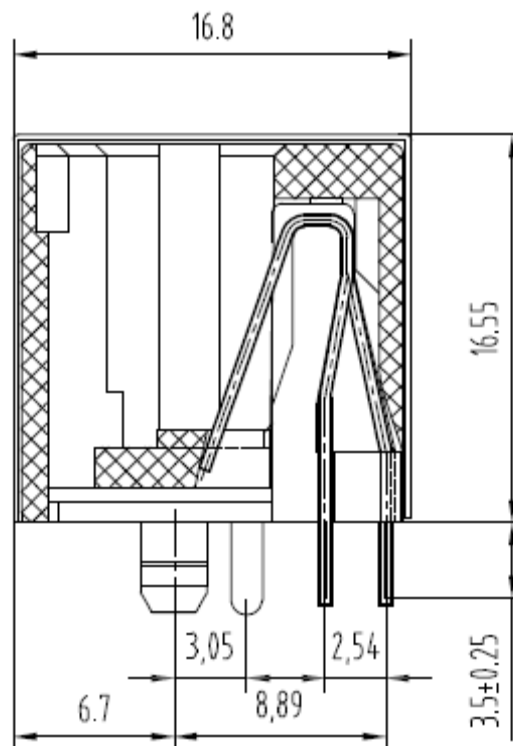
Insertion Force: 2,2Kg.F.max.
 Retention Strength: 7,7Kg.F min.beetween jack a. plug
 Durability: 600 mating cycles min.

Material

Housing: ABS RESIN (UL94V-0)
 PBT(UL94V-0 PA66(UÖ94V-0)
 PA46(UL94V-0)
 Contact wire: Diameter 0,45mm Phosphor
 Bronze Gold Plating over Nickel
 0,35mm thickness phosphor
 bronze alloy selective Gold plating
 over nickel
 Shield: 0,20~0,25mm thickness brass with
 tin plated
 Contact Plating: Gold Flash, 3 μ / 6 μ / 15 μ / 30 μ 50 μ
 inch

Working Temperatur . -40°C ~ +70°C

Technical Drawing



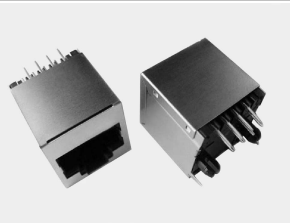
**1Port RJ-TOP-ENTRY w.
 fully shielded F=3,05mm**

Part No.: **T91A15017-**

DRW:	John	CHKD	Tony	MATL:	Tony	TOLERANCE	Su	DATE	23.05.2016
APPD:	Jimmy			FINISH	Jeff		Sheet No.		1 from 4

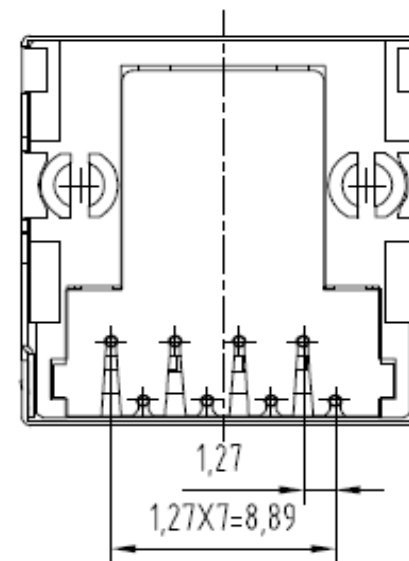
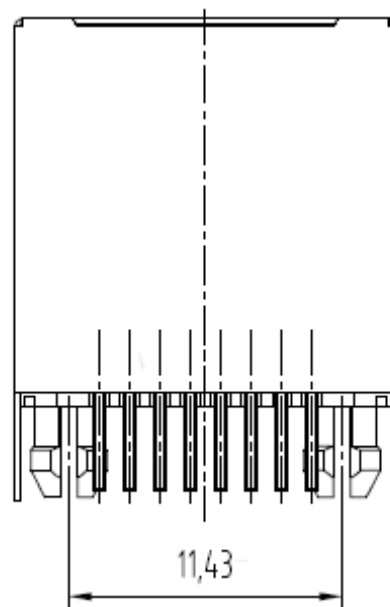
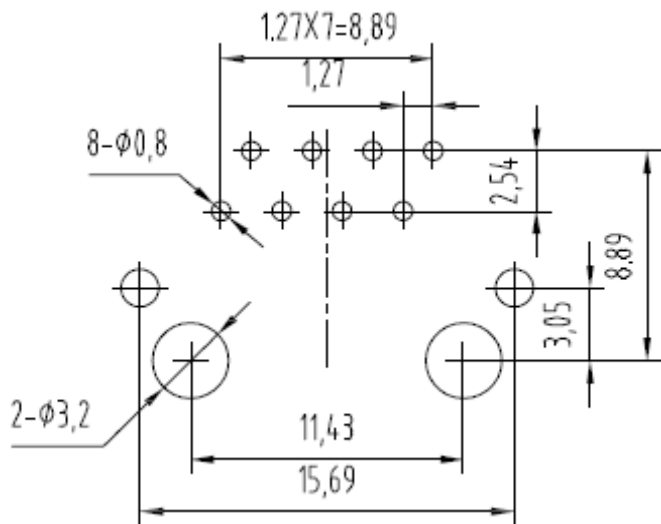
Customer:

EDCON-COMPONENTS



Technical Drawing

PCB Layout Component Side



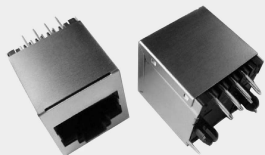
**1Port RJ-TOP-ENTRY w.
fully shielded F=3,05mm**

Part No.: **T91A15017-**

DRW:	John	CHKD	Tony	MATL:	Tony	TOLERANCE	Su	DATE	23.05.2016
APPD:	Jimmy			FINISH	Jeff		Sheet No.	2 from 4	

Customer:

EDCON-COMPONENTS



Ordering Informations

Serie	No. Of. Positions	No. Of Contact	Contact Plating	Special function	Special function	Special function	ROHS	Packing		
T91A15017-	8	8	GF	N	N	N	R	TY		

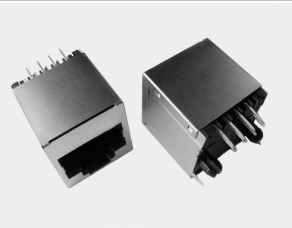
8= 8Pos.	8= 8Pos. connecting	GF= Gold Flash	N= No Special func	N= No Special func	N= No Special func	R= ROHS conform	TY= Tray Packing
		GA= 3µGold Plating				N= NON ROHS conform	BU= Bulk-Ware
		GB= 6µGold Plating					
		GC= 15µGold Plating					
		GD= 30µGold Plating					
		GE= 50µGold Plating					

**1Port RJ-TOP-ENTRY w.
fully shielded F=3,05mm**

Part No.: **T91A15017-**

DRW:	John	CHKD	Tony	MATL:	Tony	TOLERANCE	Su	DATE	23.05.2016
APPD:	Jimmy			FINISH	Jeff		Sheet No.		3 from 4

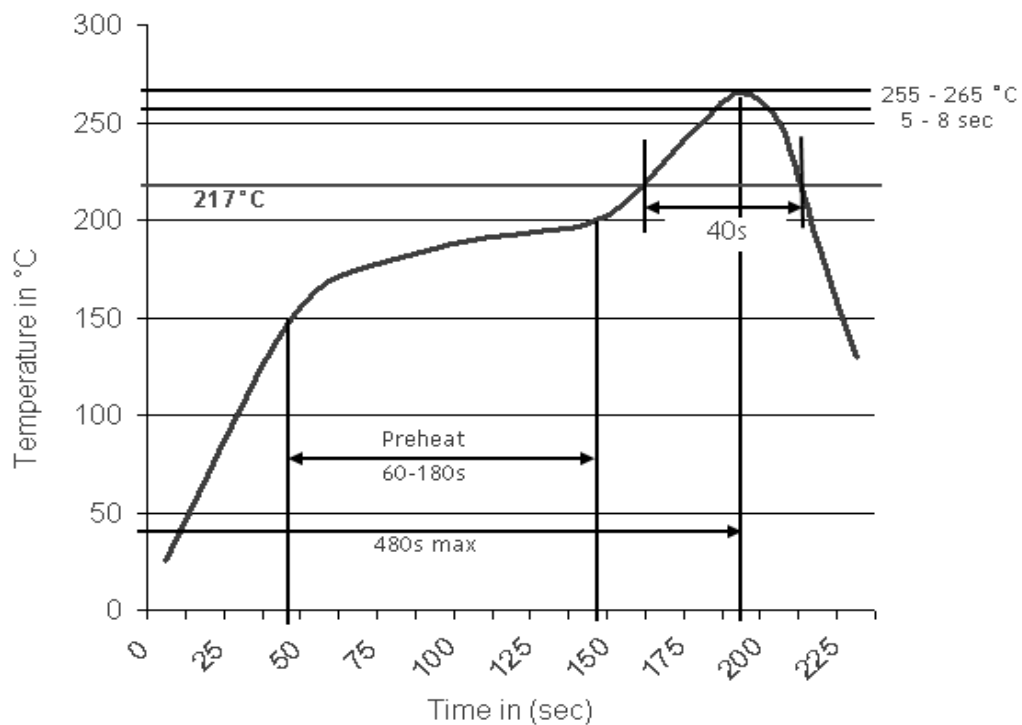
Customer:



Soldering Profile Curve

Lead Free Soldering Curve

Classification Reflow Profile (JEDEC J-STD-020C)



**1Port RJ-TOP-ENTRY w.
fully shielded F=3,05mm**

Part No.: **T91A15017-**

DRW:	John	CHKD	Tony	MATL:	Tony	TOLERANCE	Su	DATE	23.05.2016
APPD:	Jimmy			FINISH	Jeff		Sheet No.	4 from 4	

Customer: