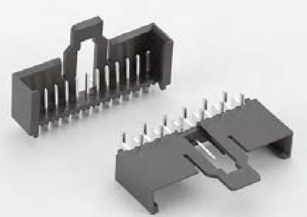


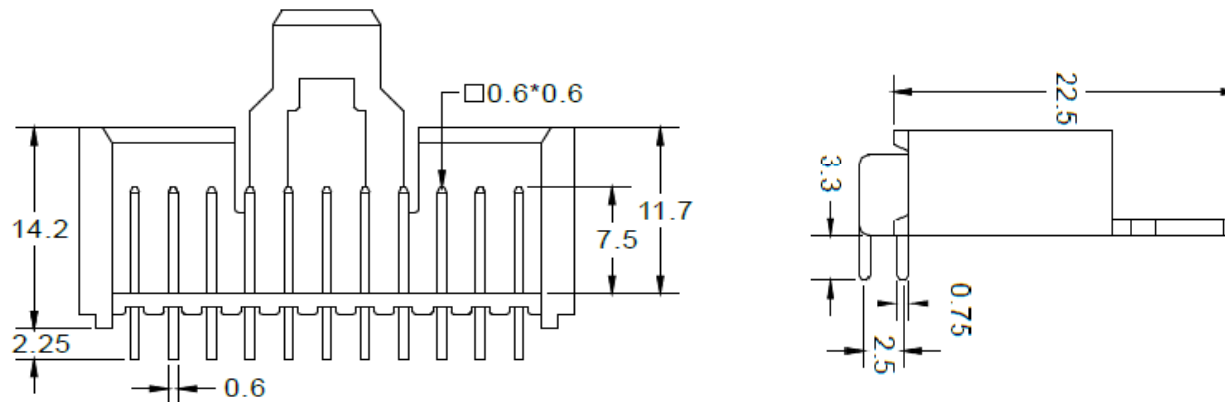
# EDCON-COMPONENTS



## Technical Description

Current Rating: 5,0A  
 Contact Resistance: 10mΩ max.  
 Withstanding Voltage: 1500VAC for 1 minute  
 Insulation Resistance: 1000MΩ Min  
 Operating Temperature: -40°C to + 105°C  
 Contact Material: Brass  
 Contact Plating: Matte SN over Ni  
 Insulator Material: PBT + 30% GF UL94V-0  
 Terminated with 2,5mm FLAT-ribbon Cable  
 Voltage Rating: 125VAC

## Drawing

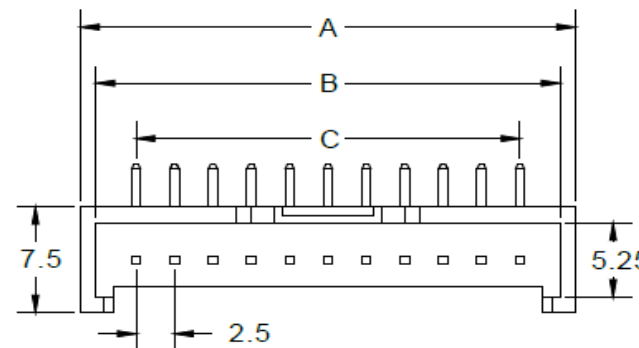


## PCB Layout



Layout TYPE A

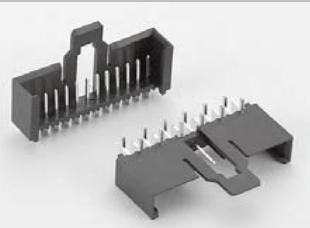
Layout TYPE B



<b>IDC Wire to Board Connector Single Inline Row</b>	
Part No.:	<b>T68P176</b>
Customer:	

DRW:	Jason	CHKD	Wilson	MATL:	Wilson	TOLERANCE	Mason	DATE	08.05.2020
APPD:	Schumi			FINISH	Jamy		Sheet No.		1 from 4

# EDCON-COMPONENTS



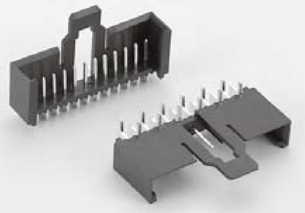
## Dimension (mm)

No Pin	A	B	C	D
2	9,70	7,70	2,50	
3	12,20	10,20	5,00	
4	14,70	12,70	7,50	
5	17,20	15,20	10,00	
6	19,70	17,70	12,50	
7	22,20	20,20	15,00	
8	24,70	22,70	17,50	
9	27,20	25,20	20,00	
10	29,70	27,70	22,50	
11	32,20	30,20	25,00	
12	34,70	32,70	27,50	
13	37,20	35,20	30,00	
14	39,70	37,70	32,50	
15	42,20	40,20	35,00	
16	44,70	42,70	37,50	
17	47,20	45,20	40,00	
18	49,70	47,70	42,50	
19	52,20	50,20	45,00	
20	54,70	52,70	47,50	

<b>IDC Wire to Board Connector Single Inline Row</b>	
Part No.:	<b>T68P176</b>
Customer:	

DRW:	Jason	CHKD	Wilson	MATL:	Wilson	TOLERANCE	Mason	DATE	08.05.2020
APPD:	Schumi			FINISH	Jamy		Sheet No.		2 from 4

# EDCON-COMPONENTS



### Ordering Informations

Serie	No. Of Position	Contact Plating	Contact Material	Color of Body	PCB Layout Type	Special Function	ROHS	Packing		
-------	-----------------	-----------------	------------------	---------------	-----------------	------------------	------	---------	--	--

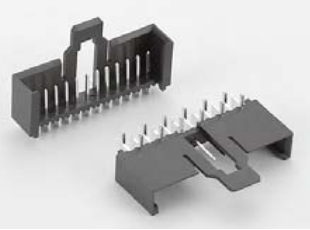
<b>T68P176</b>	<b>02</b>	<b>TN</b>	<b>PB</b>	<b>BK</b>	<b>A</b>	<b>N</b>	<b>R</b>	<b>BU</b>		
----------------	-----------	-----------	-----------	-----------	----------	----------	----------	-----------	--	--

<b>02= 2Pos.</b>	<b>TN= tinned</b>			<b>A= PCB Layout Type A</b>	<b>N= No Function</b>	<b>R= ROHS Conform</b>	<b>BU= Bulk-Ware</b>
<b>2 ~ 20Pos.</b>		<b>PB= Phosphor Bronze</b>	<b>BK= Black</b>	<b>B= PCB Layout Type B</b>		<b>N= NON ROHS Conform</b>	
							<b>IV= Individual Packing</b>

**IDC Wire to Board Connector  
Single Inline Row**

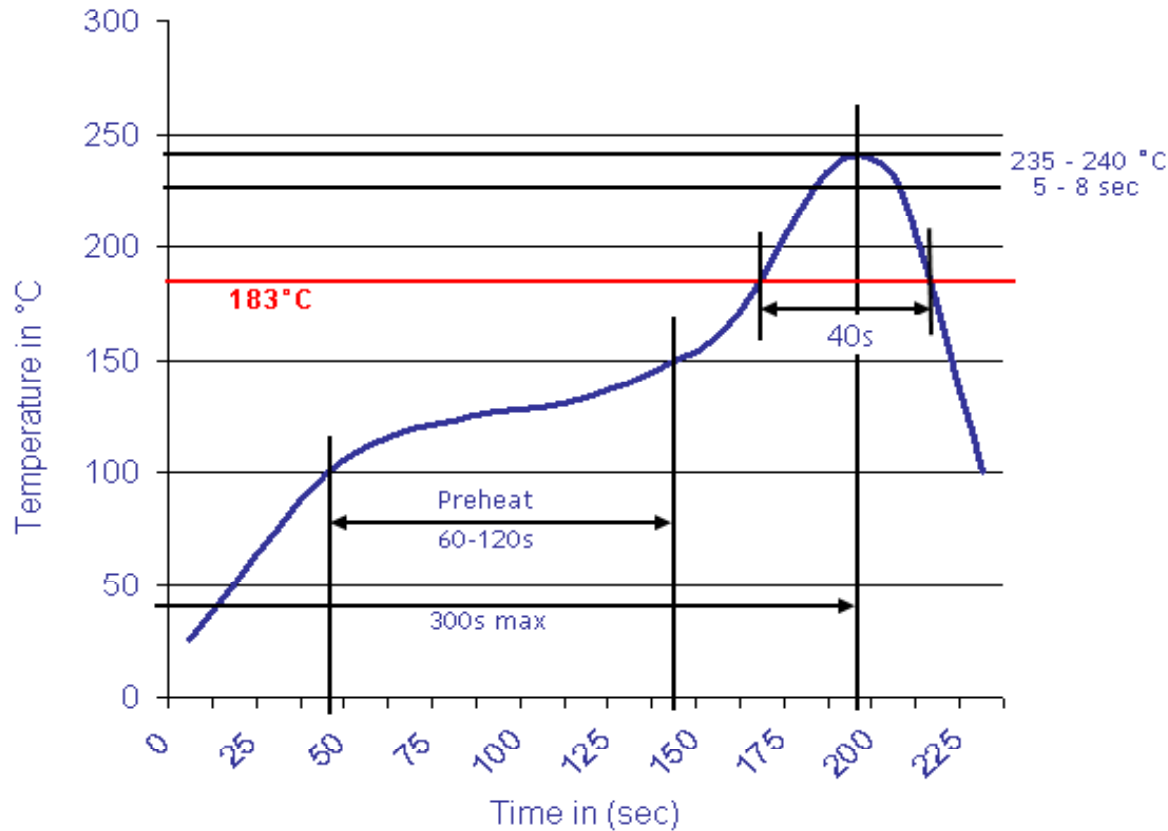
Part No.:	<b>T68P176</b>
Customer:	

DRW:	Jason	CHKD	Wilson	MATL:	Wilson	TOLERANCE	Mason	DATE	08.05.2020
APPD:	Schumi			FINISH	Jamy		Sheet No.		3 from 4



Soldering Profile Curve

Classification Reflow Profile (JEDEC J-STD-020C)



<b>IDC Wire to Board Connector Single Inline Row</b>	
Part No.:	<b>T68P176</b>
Customer:	

DRW:	Jason	CHKD	Wilson	MATL:	Wilson	TOLERANCE	Mason	DATE	08.05.2020
APPD:	Schumi			FINISH	Jamy		Sheet No.	4 from 4	