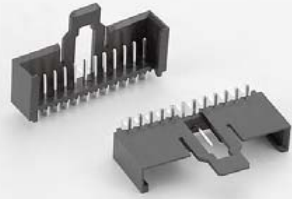


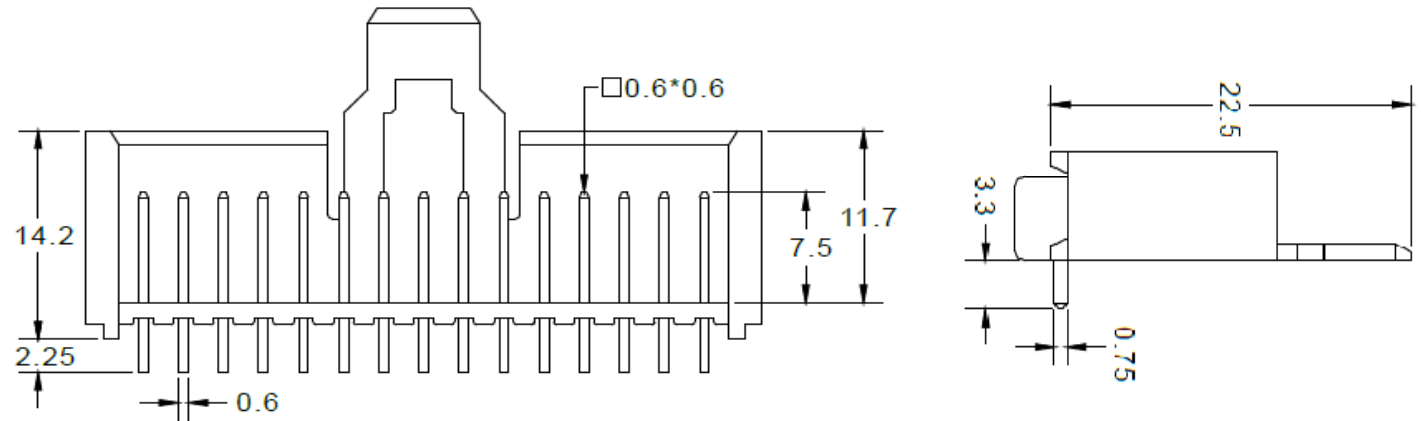
EDCON-COMPONENTS



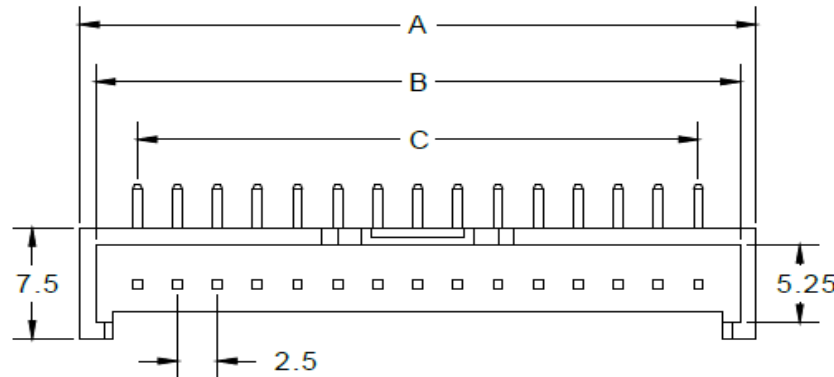
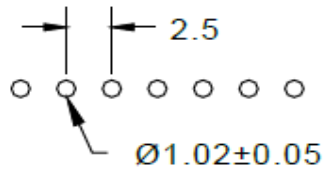
Technical Description

Current Rating: 5,0A
 Contact Resistance: 10mΩ max.
 Withstanding Voltage: 1500VAC for 1 minute
 Insulation Resistance: 1000MΩ Min
 Operating Temperature: -40°C to + 105°C
 Contact Material: Brass
 Contact Plating: Matte SN over Ni
 Insulator Material: PBT + 30% GF UL94V-0
 Terminated with: 2,5mm FLAT-ribbon Cable
 Voltage Rating: 125VAC

Drawing

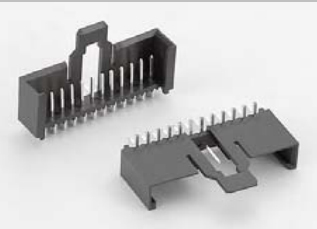


PCB Layout



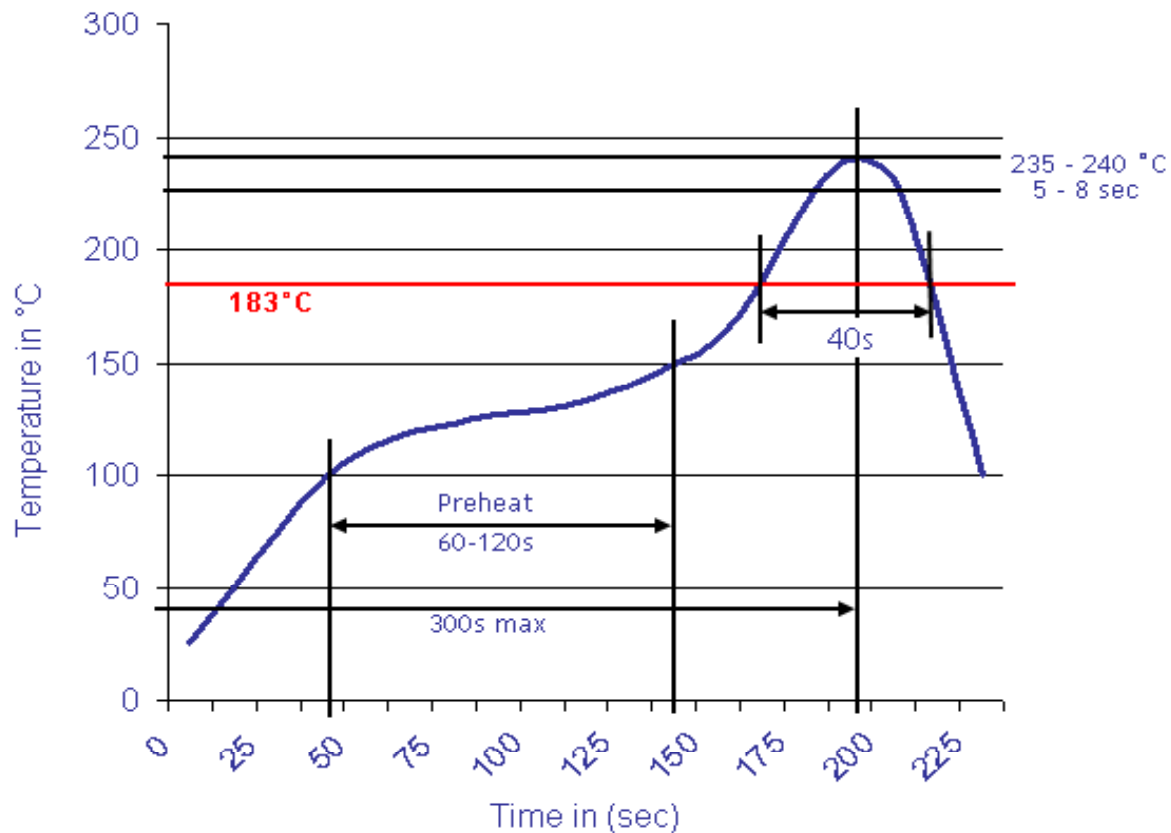
IDC Wire to Board Connector Single Inline Row	
Part No.:	T68P175
Customer:	

DRW:	Jason	CHKD	Wilson	MATL:	Wilson	TOLERANCE	Mason	DATE	08.05.2020
APPD:	Schumi			FINISH	Jamy		Sheet No.		1 from 4



Soldering Profile Curve

Classification Reflow Profile (JEDEC J-STD-020C)



IDC Wire to Board Connector Single Inline Row	
Part No.:	T68P175
Customer:	

DRW:	Jason	CHKD	Wilson	MATL:	Wilson	TOLERANCE	Mason	DATE	08.05.2020
APPD:	Schumi			FINISH	Jamy		Sheet No.	4 from 4	