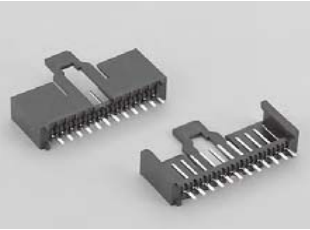


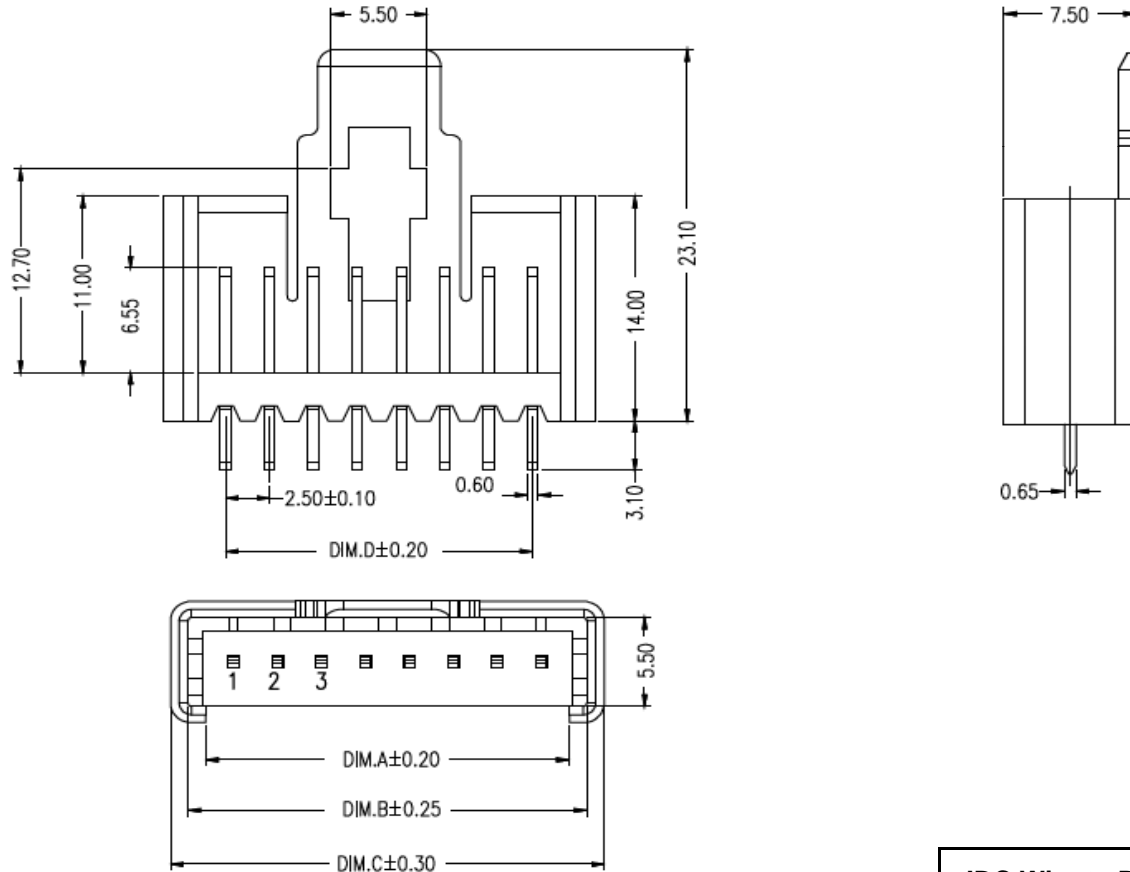
# EDCON-COMPONENTS



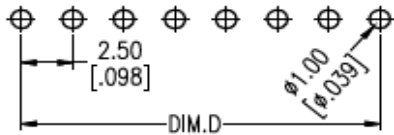
## Technical Discription

Curent Rating: 5,0A  
 Contact Resistance: 10mΩ max.  
 Withstanding Voltage: 1500VAC for 1 minute  
 Insulation Resistance: 1000MΩ Min  
 Operating Temperature: -40°C to + 105°C  
 Contact Material: Brass  
 Contact Plating: Matte SN over Ni  
 Insulator Material: PBT + 30% GF UL94V-0  
 Terminated with 2,5mm FLAT-ribbon Cable  
 Voltage Rating: 125VAC

## Drawing



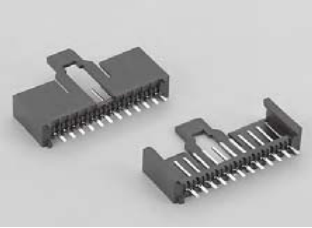
## PCB Layout



<b>IDC Wire to Board Connector Single Inline Row</b>	
Part No.:	<b>T68P158</b>
Customer:	

DRW:	Jason	CHKD	Wilson	MATL:	Wilson	TOLERANCE	Mason	DATE	08.05.2020
APPD:	Schumi			FINISH	Jamy			Sheet No.	1 from 4

# EDCON-COMPONENTS



## Dimension (mm)

No Pin	A	B	C	D
2	5,70	7,70	9,70	2,50
3	8,20	10,20	12,20	5,00
4	10,70	12,70	14,70	7,50
5	13,20	15,20	17,20	10,00
6	15,70	17,70	19,70	12,50
7	18,20	20,20	22,20	15,00
8	20,70	22,70	24,70	17,50
9	23,20	25,20	27,20	20,00
10	25,70	27,70	29,70	22,50
11	28,20	30,20	32,20	25,00
12	30,70	32,70	34,70	27,50
13	33,20	35,20	37,20	30,00
14	35,70	37,70	39,70	32,50
15	38,20	40,20	42,20	35,00
16	40,70	42,70	44,70	37,50
17	43,20	45,20	47,20	40,00
18	45,70	47,70	49,70	42,50
19	48,20	50,20	52,20	45,00
20	50,70	52,70	54,70	47,50

<b>IDC Wire to Board Connector Single Inline Row</b>	
Part No.:	<b>T68P158</b>

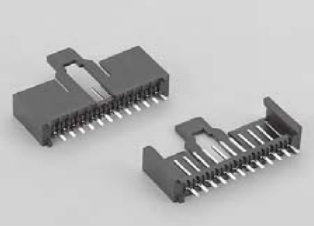
DRW:	Jason	CHKD	Wilson	MATL:	Wilson	TOLERANCE	Mason	DATE	08.05.2020
APPD:	Schumi			FINISH	Jamy		Sheet No.	2	from 4

Customer:	
-----------	--

[www.edcon-components.com](http://www.edcon-components.com)

email: [info@edcon-components.com](mailto:info@edcon-components.com)

# EDCON-COMPONENTS



## Ordering Informations

Serie	No. Of Position	Contact Plating	Contact Material	Color of Body	Special Function	Special Function	ROHS	Packing		
<b>T68P158</b>	<b>02</b>	<b>TN</b>	<b>PB</b>	<b>BK</b>	<b>N</b>	<b>N</b>	<b>R</b>	<b>BU</b>		

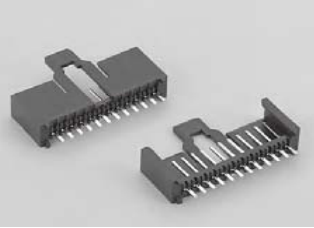
02= 2Pos.	TN= tinned			N= No Function	N= No Function	R= ROHS Conform	BU= Bulk-Ware
2 ~ 20Pos.		PB= Phosphor Bronze	BK= Black			N= NON ROHS Conform	

<b>IDC Wire to Board Connector Single Inline Row</b>	
Part No.:	<b>T68P158</b>
Customer:	

DRW:	Jason	CHKD	Wilson	MATL:	Wilson	TOLERANCE	Mason	DATE	08.05.2020
APPD:	Schumi			FINISH	Jamy		Sheet No.		3 from 4

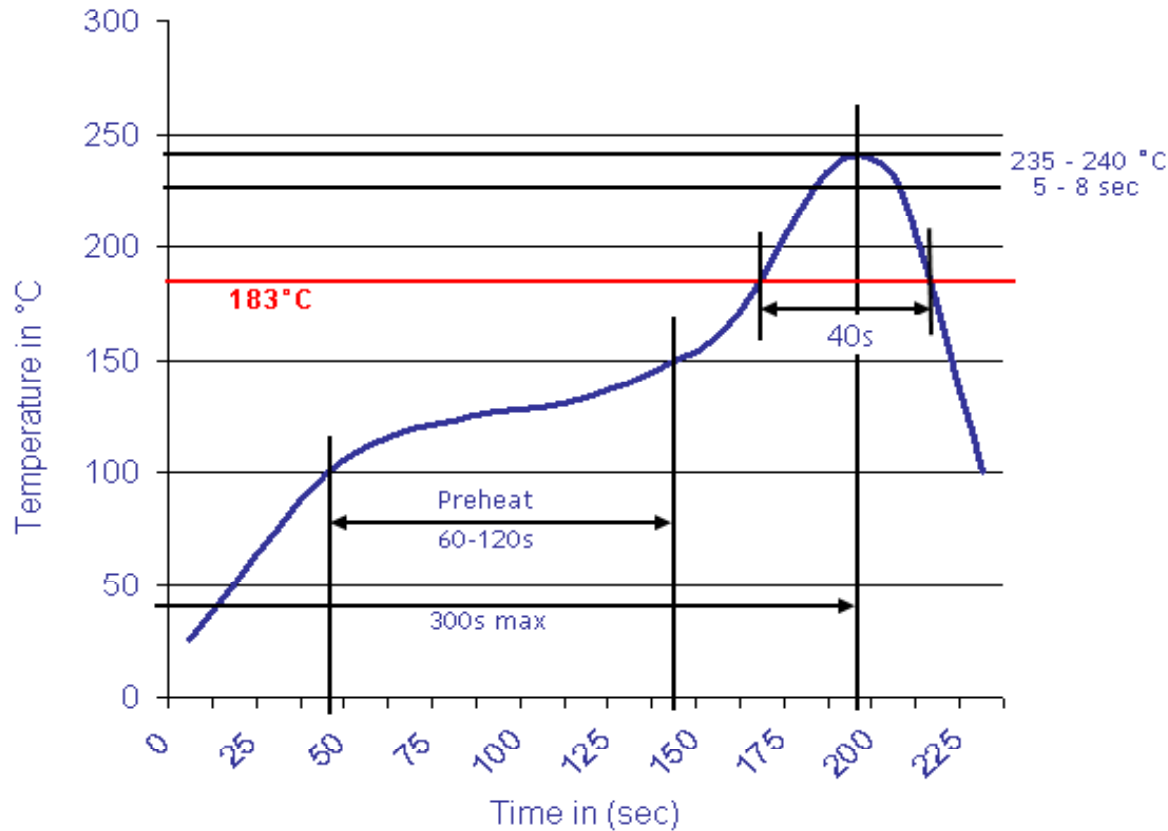
[www.edcon-components.com](http://www.edcon-components.com)

email: [info@edcon-components.com](mailto:info@edcon-components.com)



Soldering Profile Curve

Classification Reflow Profile (JEDEC J-STD-020C)



<b>IDC Wire to Board Connector Single Inline Row</b>	
Part No.:	<b>T68P158</b>
Customer:	

DRW:	Jason	CHKD	Wilson	MATL:	Wilson	TOLERANCE	Mason	DATE	08.05.2020
APPD:	Schumi			FINISH	Jamy		Sheet No.	4 from 4	