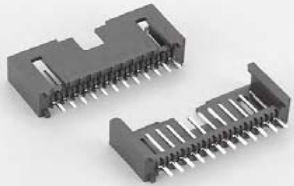


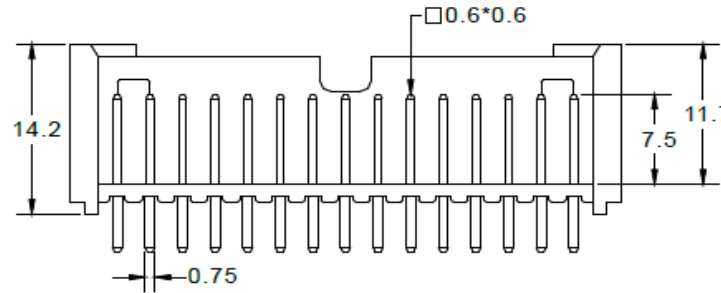
# EDCON-COMPONENTS



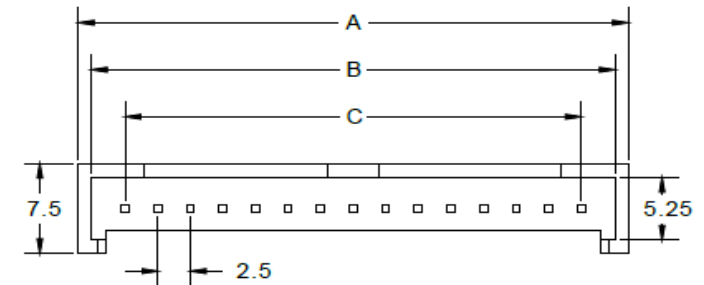
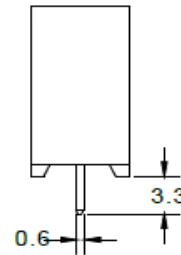
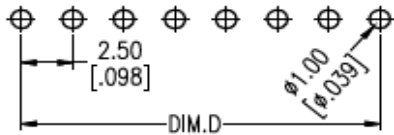
## Technical Description

Curent Rating:	5,0A
Contact Resistance:	10mΩ max.
Withstanding Voltage:	1500VAC for 1 minute
Insulation Resistance:	1000MΩ Min
Operating Temperature:	.-40°c to + 105°C
Contact Material:	Brass
Contact Plating:	Matte SN over Ni
Insulator Material:	PBT + 30% GF UL94V-0
Terminated with	2,5mm FLAT-ribbon Cable
Voltage Rating:	125VAC

## Drawing



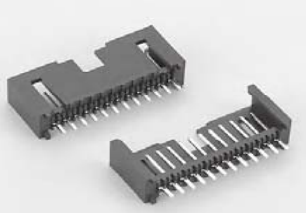
## PCB Layout



<b>IDC Wire to Board Connector Single Inline Row</b>	
Part No.:	<b>T68P157</b>
Customer:	

DRW:	Jason	CHKD	Wilson	MATL:	Wilson	TOLERANCE	Mason	DATE	08.05.2020
APPD:	Schumi			FINISH	Jamy		Sheet No.	1 from 4	

# EDCON-COMPONENTS



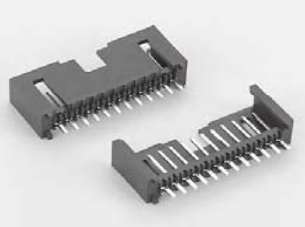
### Dimension (mm)

No Pin	A	B	C	D
2	9,70	7,70	2,50	2,50
3	12,20	10,20	5,00	5,00
4	14,70	12,70	7,50	7,50
5	17,20	15,20	10,00	10,00
6	19,70	17,70	12,50	12,50
7	22,20	20,20	15,00	15,00
8	24,70	22,70	17,50	17,50
9	27,20	25,20	20,00	20,00
10	29,70	27,70	22,50	22,50
11	32,20	30,20	25,00	25,00
12	34,70	32,70	27,50	27,50
13	37,20	35,20	30,00	30,00
14	39,70	37,70	32,50	32,50
15	42,20	40,20	35,00	35,00
16	44,70	42,70	37,50	37,50
17	47,20	45,20	40,00	40,00
18	49,70	47,70	42,50	42,50
19	52,20	50,20	45,00	45,00
20	54,70	52,70	47,50	47,50

<b>IDC Wire to Board Connector Single Inline Row</b>	
Part No.:	<b>T68P157</b>
Customer:	

DRW:	Jason	CHKD	Wilson	MATL:	Wilson	TOLERANCE	Mason	DATE	08.05.2020
APPD:	Schumi			FINISH	Jamy		Sheet No.	2	from 4

# EDCON-COMPONENTS



## Ordering Informations

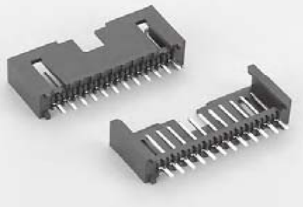
Serie	No. Of Position	Contact Plating	Contact Material	Color of Body	Special Function	Special Function	ROHS	Packing		
<b>T68P157</b>	<b>02</b>	<b>TN</b>	<b>PB</b>	<b>BK</b>	<b>N</b>	<b>N</b>	<b>R</b>	<b>BU</b>		

<b>02=</b> 2Pos.	<b>TN=</b> tinned			<b>N=</b> No Function	<b>N=</b> No Function	<b>R=</b> ROHS Conform	<b>BU=</b> Bulk-Ware
2 ~ 20Pos.		<b>PB=</b> Phosphor Bronze	<b>BK=</b> Black			<b>N=</b> NON ROHS Conform	
							<b>IV=</b> Individual Packing

<b>IDC Wire to Board Connector Single Inline Row</b>	
Part No.:	<b>T68P157</b>
Customer:	

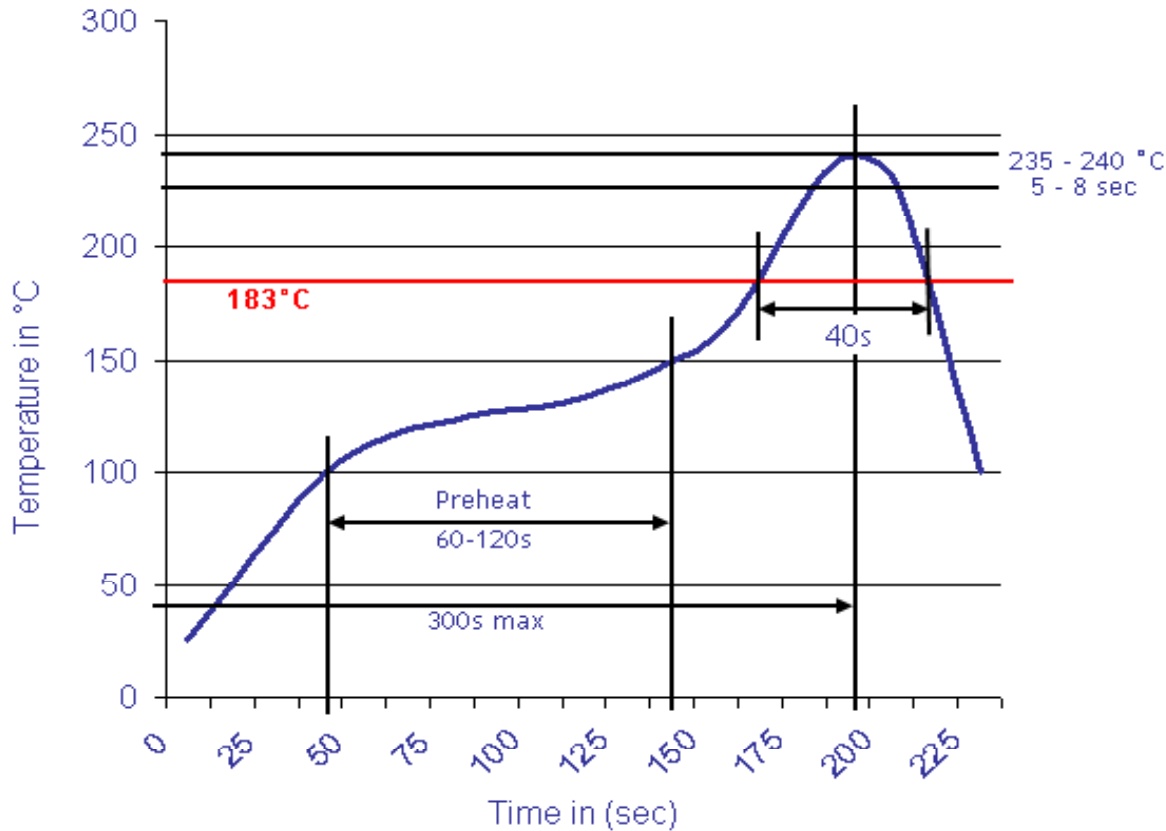
DRW:	Jason	CHKD	Wilson	MATL:	Wilson	TOLERANCE	Mason	DATE	08.05.2020
APPD:	Schumi			FINISH	Jamy		Sheet No.	3 from 4	

[www.edcon-components.com](http://www.edcon-components.com)



Soldering Profile Curve

Classification Reflow Profile (JEDEC J-STD-020C)



<b>IDC Wire to Board Connector Single Inline Row</b>	
Part No.:	<b>T68P157</b>
Customer:	

DRW:	Jason	CHKD	Wilson	MATL:	Wilson	TOLERANCE	Mason	DATE	08.05.2020
APPD:	Schumi			FINISH	Jamy		Sheet No.	4 from 4	