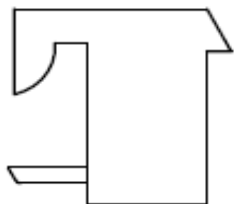


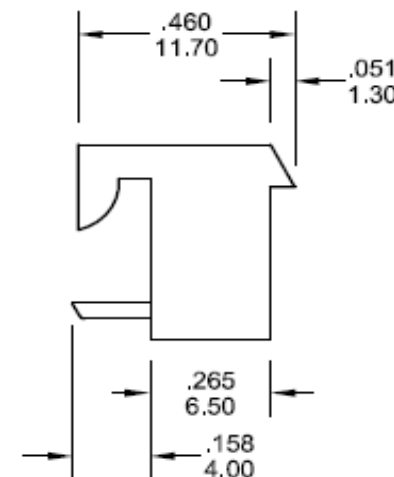
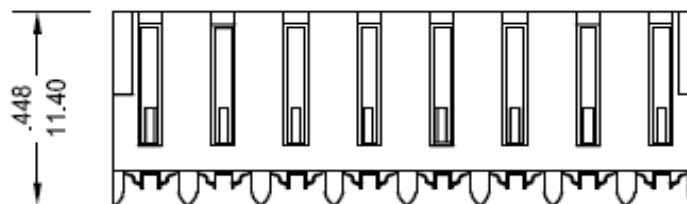
EDCON-COMPONENTS



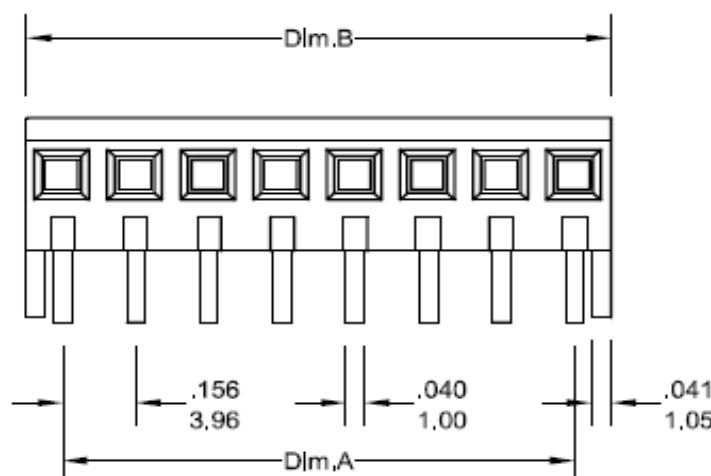
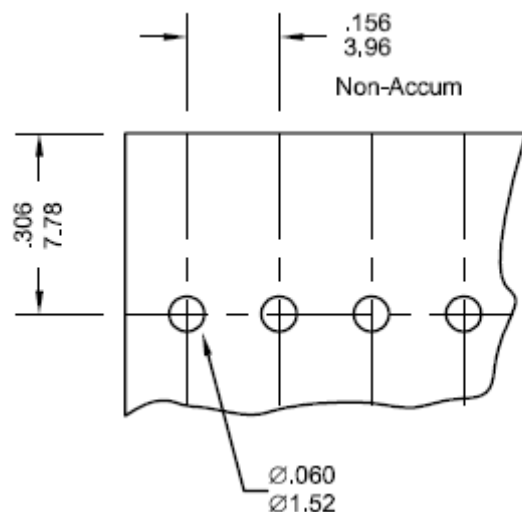
Specifications

Voltage Rating:	250 VAC/DC
Current Rating:	7A AC/DC
Operating Temperature:	-40°C to + 105°C
Contact Resistance:	10 mΩ
Withstanding Voltage:	1500 V AC/Minute
Insulation Resistance:	5000MΩ min.
Material Housing:	Nylon 66 / UL94V-0
Pin-Material:	Brass /Tin-plated
Body Color:	Natural (White)
Mates with 1,14mm square pins	

Drawing (dimensions all into mm)

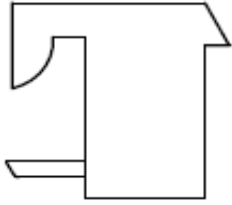


P.C.B. Layout



Wafer Serie T68Jxxxx Pitch 3,96mm	
Part No.:	T68J031
Customer:	

DRW:	Jason	CHKD	Wilson	MATL:	Wilson	TOLERANCE	Mason	DATE	03.12.2011
APPD:	Schumi			FINISH	Jamy			Sheet No.	1 from 4



Dimension Information about Housing

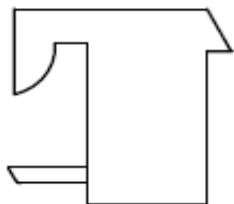
Pos.	Dimension (mm)					
	A	B	C	D	E	F
2	3,96	7,92				
3	7,92	11,88				
4	11,88	15,84				
5	15,84	19,80				
6	19,80	23,76				
7	23,76	27,72				
8	27,72	31,68				
9	31,68	35,64				
10	35,64	39,60				
11	39,60	43,56				
12	43,56	47,52				
13	47,52	51,48				
14	51,48	55,44				
15	55,44	59,40				
16	59,40	63,36				
17	63,36	67,32				
18	67,32	71,28				
19	71,28	75,24				
20	75,24	79,20				
21	79,20	83,16				
22	83,16	87,12				
23	87,12	91,08				
24	91,08	95,04				
25	95,04	99,00				

Pos.	Dimension (mm)					
	A	B	C	D	E	F

Wafer Serie T68Jxxxx Pitch 3,96mm
Part No.: T68J031
Customer:

DRW:	Jason	CHKD	Wilson	MATL:	Wilson	TOLERANCE	Mason	DATE	03.12.2011
APPD:	Schumi			FINISH	Jamy		Sheet No.		2 from 4

EDCON-COMPONENTS



Ordering Informations

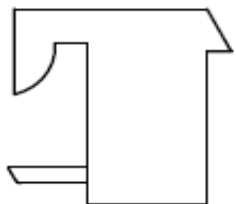
Serie	Number of Pos.	Contact Plating	Color of Body	ROHS	Packing					
-------	----------------	-----------------	---------------	------	---------	--	--	--	--	--

T68J031	02	T0	NA	R	BU					
----------------	-----------	-----------	-----------	----------	-----------	--	--	--	--	--

xx = Pos.	T0= Tin plated (Standard)	NA= Natural (White)	R= ROHS Conform	BU= Bulk - Ware					
	G0= Gold Flash		N= NON ROHS Conform						
	S0= Selectiv Gold Flash								
	GA= 5µ Gold Plated								
	GB= 10µ Gold Plated								
	GC= 15µ Gold Plated								
	GD= 30µ Gold Plated								

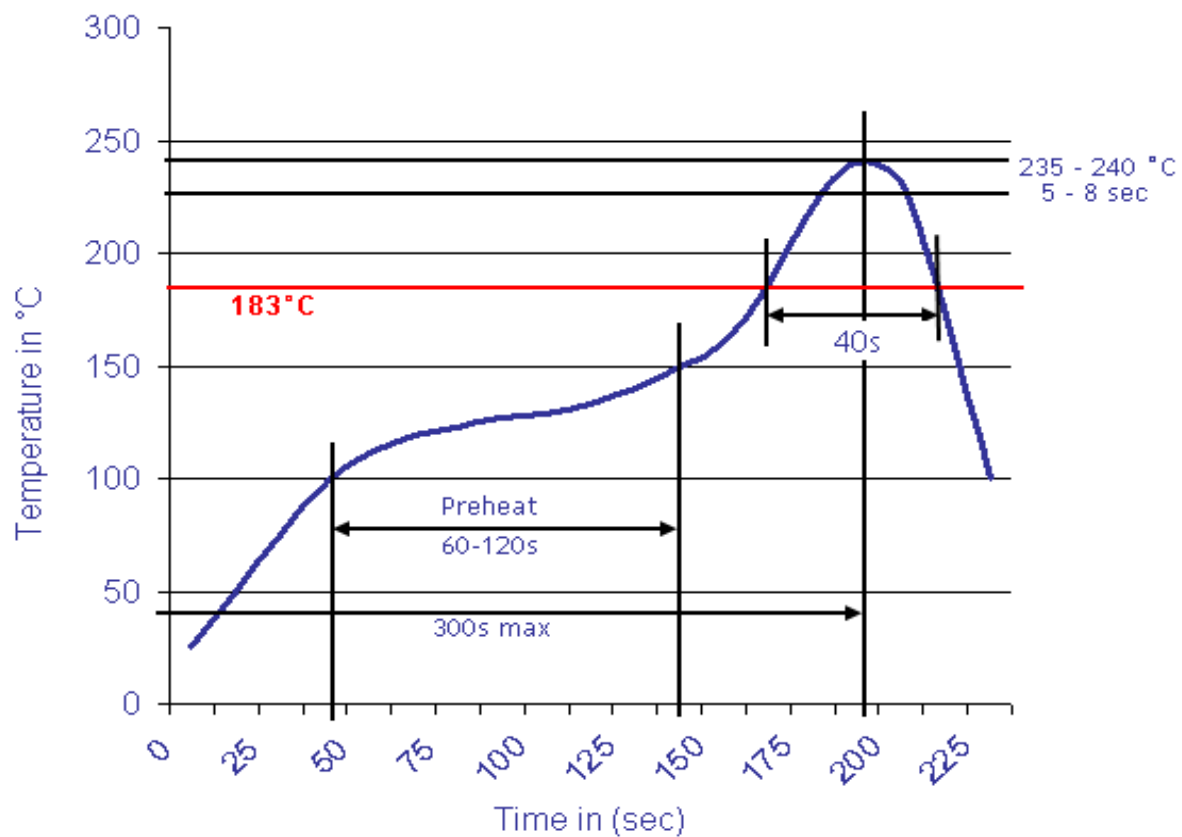
Wafer Serie T68Jxxxx Pitch 3,96mm
Part No.: T68J031
Customer:

DRW:	Jason	CHKD	Wilson	MATL:	Wilson	TOLERANCE	Mason	DATE	03.12.2011
APPD:	Schumi			FINISH	Jamy		Sheet No.		3 from 4



Soldering Profile Curve

Classification Reflow Profile (JEDEC J-STD-020C)



Wafer Serie T68Jxxxx Pitch 3,96mm
Part No.: T68J031
Customer:

DRW:	Jason	CHKD	Wilson	MATL:	Wilson	TOLERANCE	Mason	DATE	03.12.2011
APPD:	Schumi			FINISH	Jamy		Sheet No.	4 from 4	