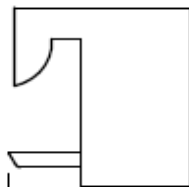


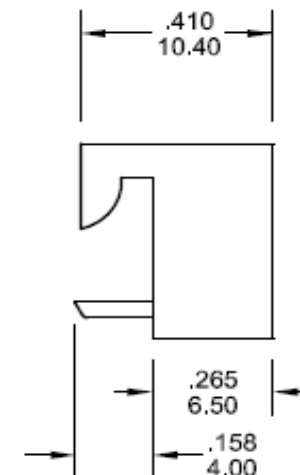
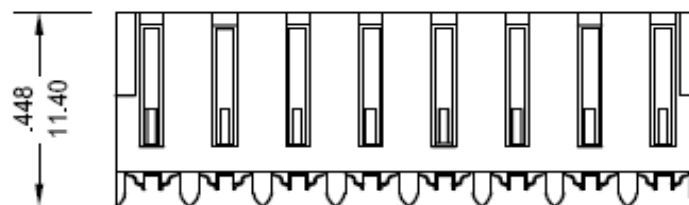
EDCON-COMPONENTS



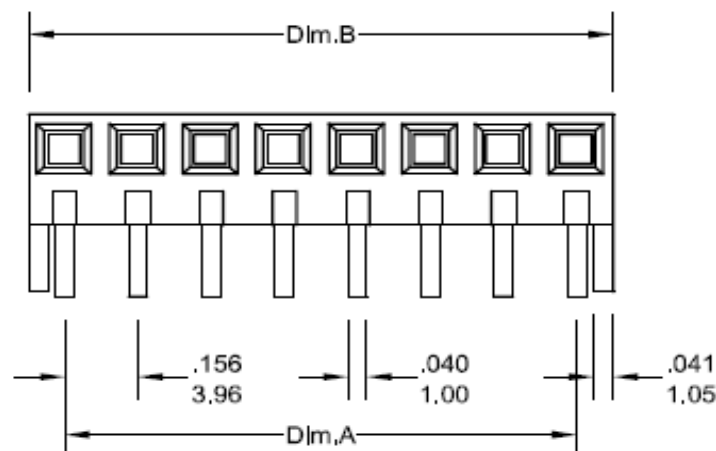
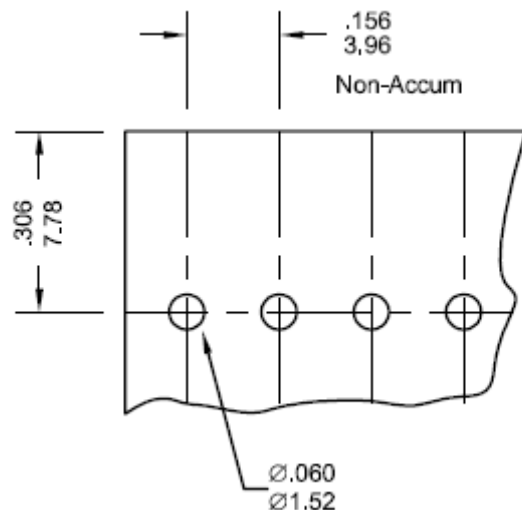
Specifications

Voltage Rating:	250 VAC/DC
Current Rating:	7A AC/DC
Operating Temperature:	-40°C to + 105°C
Contact Resistance:	10 mΩ
Withstanding Voltage:	1500 V AC/Minute
Insulation Resistance:	5000MΩ min.
Material Housing:	Nylon 66 / UL94V-0
Pin-Material:	Brass /Tin-plated
Body Color:	Natural (White)
Mates with 1,14mm square pins	

Drawing (dimensions all into mm)



P.C.B. Layout



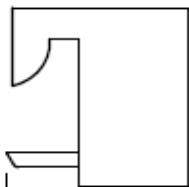
Wafer Serie T68Jxxxx Pitch
3,96mm

Part No.: **T68J030**

Customer:

DRW:	Jason	CHKD	Wilson	MATL:	Wilson	TOLERANCE	Mason	DATE	03.12.2011
APPD:	Schumi			FINISH	Jamy		Sheet No.	1 from 4	

EDCON-COMPONENTS



Ordering Informations

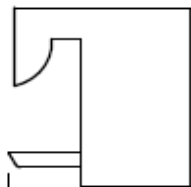
Serie	Number of Pos.	Contact Plating	Color of Body	ROHS	Packing					
-------	----------------	-----------------	---------------	------	---------	--	--	--	--	--

T68J030	02	T0	NA	R	BU					
----------------	-----------	-----------	-----------	----------	-----------	--	--	--	--	--

xx = Pos.	T0= Tin plated (Standard)	NA= Natural (White)	R= ROHS Conform	BU= Bulk - Ware					
	G0= Gold Flash		N= NON ROHS Conform						
	S0= Selectiv Gold Flash								
	GA= 5µ Gold Plated								
	GB= 10µ Gold Plated								
	GC= 15µ Gold Plated								
	GD= 30µ Gold Plated								

Wafer Serie T68Jxxxx Pitch 3,96mm
Part No.: T68J030
Customer:

DRW:	Jason	CHKD	Wilson	MATL:	Wilson	TOLERANCE	Mason	DATE	03.12.2011
APPD:	Schumi			FINISH	Jamy		Sheet No.		3 from 4



Soldering Profile Curve

Classification Reflow Profile (JEDEC J-STD-020C)



Wafer Serie T68Jxxxx Pitch 3,96mm
Part No.: T68J030
Customer:

DRW:	Jason	CHKD	Wilson	MATL:	Wilson	TOLERANCE	Mason	DATE	03.12.2011
APPD:	Schumi			FINISH	Jamy		Sheet No.	4 from 4	