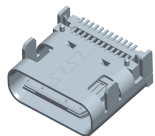


EDCON-COMPONENTS



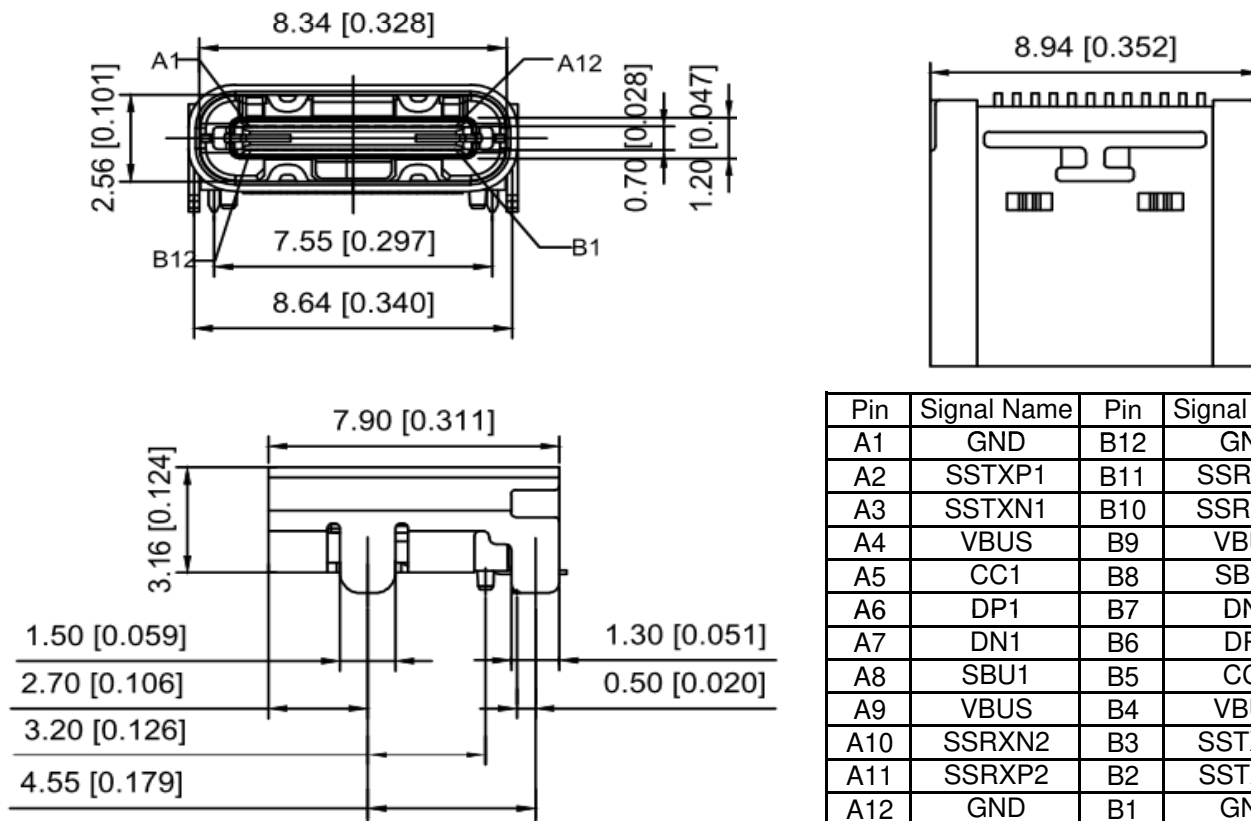
Contact



Specifications

Material:	
Housing:	High Temperature Thermoplastic
Contact Terminal:	High Grade Copper Alloy
Metallic Shell:	Stainless Steel
Inner Ground Cover Shell:	Stainless Steel
Mid Plate:	Stainless Steel
Plating Data Contact:	
Underplating:	50µ" min Nickel
Contact Plating:	1µ" Gold
Solder Area:	80µ" matte Tin
Shell	
Metallic Shell:	50µ" min Nickel
Cover Shell	
Metallic Shell:	80µ" min Nickel
Inner Ground Cover Shell:	50µ" min Nickel
Electrical	
Voltage Rating:	20VDC
Current Rating:	Vbus pins collectively 5,00A, GND pins collectively 6,25A B5 pin 1,25A, other Pins 0,25A per Pin
Contact Resistance:	40m Ohm max.
Insulation Resistance:	100M Ohm min.
Dielectric withstanding Vol.	100V AC/Minute
Mechanical:	
Durability:	10000 cycles
Mating Force:	5 to 20N
Unmating force:	8 to 20N (post test)

Drawing (dimensions all into mm)



Pin	Signal Name	Pin	Signal Name
A1	GND	B12	GND
A2	SSTXP1	B11	SSRXP1
A3	SSTXN1	B10	SSRXN1
A4	VBUS	B9	VBUS
A5	CC1	B8	SBU2
A6	DP1	B7	DN2
A7	DN1	B6	DP2
A8	SBU1	B5	CC2
A9	VBUS	B4	VBUS
A10	SSRXN2	B3	SSTXN2
A11	SSRXP2	B2	SSTXP2
A12	GND	B1	GND

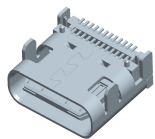
Tolerances unless otherwise specified (mm)

X	X.X	X.XX	X.XXX	Angle
±	±	±	±	±3°

SMT USB Connector Type C	
Part No.:	T64145
Customer:	

DRW:	Jason	CHKD	Wilson	MATL:	Wilson	TOLERANCE	Mason	DATE	02.11.2021
APPD:	Schumi			FINISH	Jamy			Sheet No.	1 from 3

EDCON-COMPONENTS

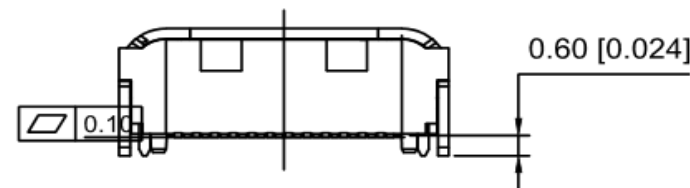
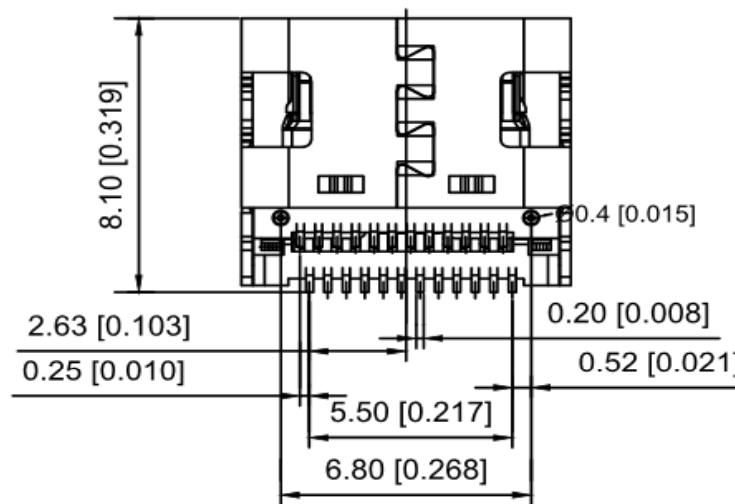
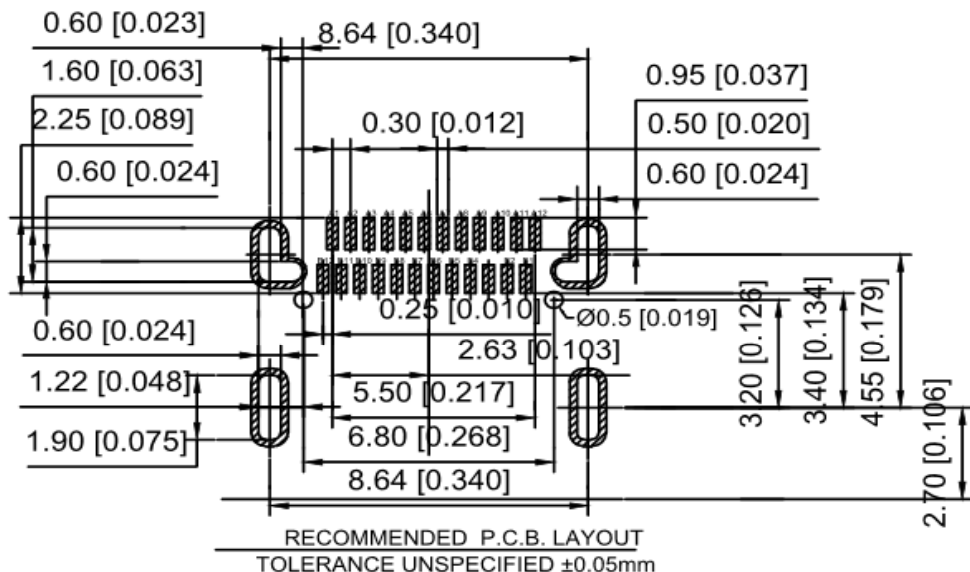


Contact



PCB-Layout (mm)

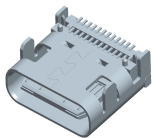
Technical Dimension (mm)



SMT USB Connector Type C	
Part No.:	T64145
Customer:	

DRW:	Jason	CHKD	Wilson	MATL:	Wilson	TOLERANCE	Mason	DATE	02.11.2021
APPD:	Schumi			FINISH	Jamy		Sheet No.		2 from 3

EDCON-COMPONENTS



Contact



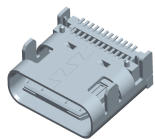
Ordering Informations

Serie	No of Pos.	Contact Plating	Contact Material	Body Colour	Shell Material	Insulator Material	Special function	ROHS	Packing
T64145	24	GF	CO	BK	ST	PB	N	R	TY

24= No of Contacts	GF= 1U" Gold Flash		BK= Black	SS= Stainless Steel	PB= PBT + 30GF	N= No function	R= RoHS Conform	BU= Bulk-Ware
	GA= 3" Gold Flash							TY= Tray Packing
	GB= 15U" Gold Flash	CO= Copper Alloy						TR= Tape Reel Packing
	GC= 30U" Gold Flash							

SMT USB Connector Type C	
Part No.:	T64145
Customer:	

DRW:	Jason	CHKD	Wilson	MATL:	Wilson	TOLERANCE	Mason	DATE	02.11.2021
APPD:	Schumi			FINISH	Jamy		Sheet No.		2 from 3

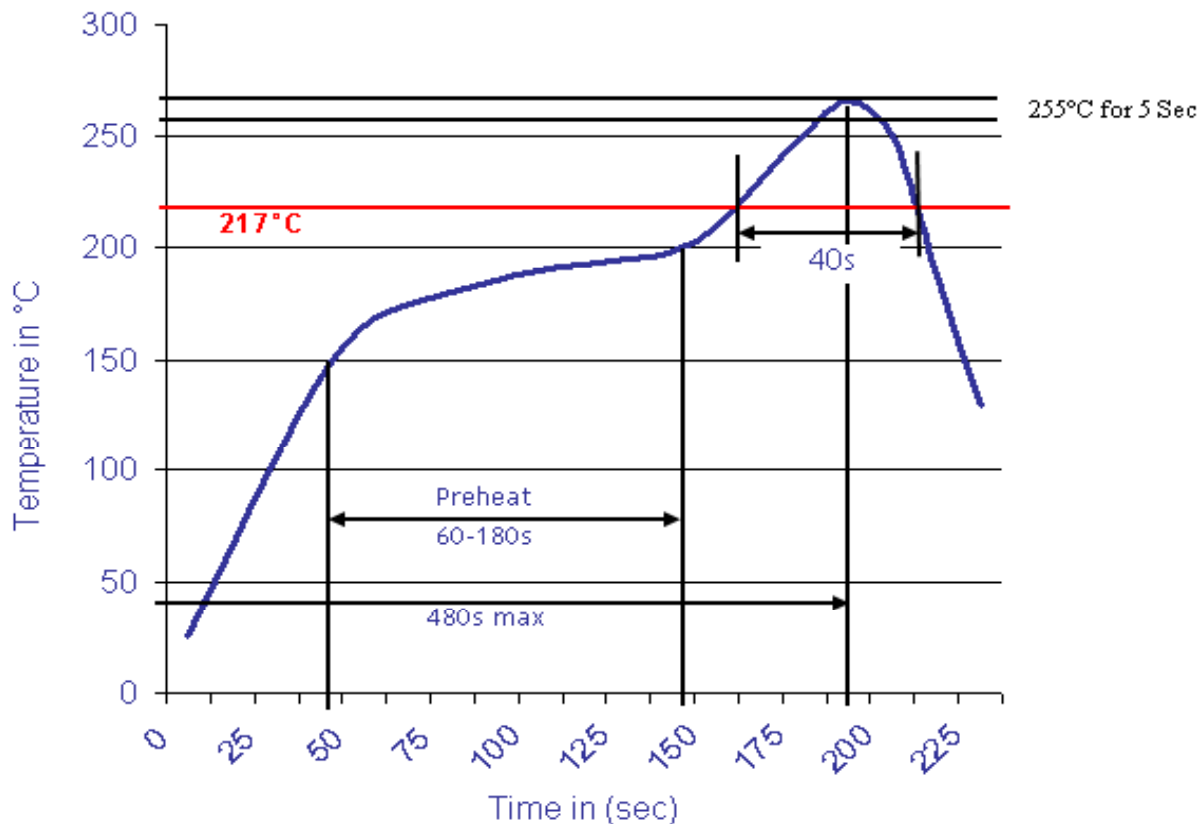


Contact



Soldering Profile Curve

Classification Reflow Profile (JEDEC J-STD-020C)



SMT USB Connector Type C	
Part No.:	T64145
Customer:	

DRW:	Jason	CHKD	Wilson	MATL:	Wilson	TOLERANCE	Mason	DATE	02.11.2021
APPD:	Schumi			FINISH	Jamy		Sheet No.	3 from 3	