

EDCON-COMPONENTS

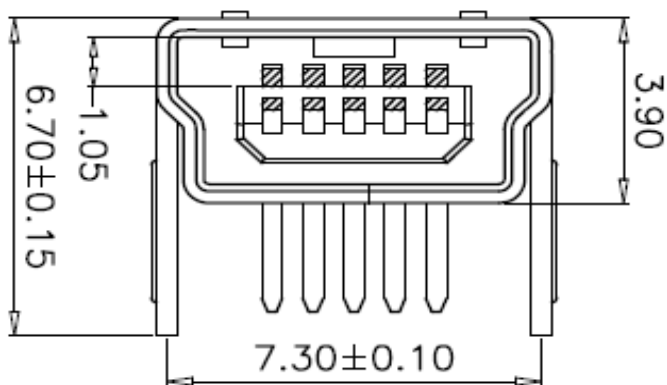


Specifications

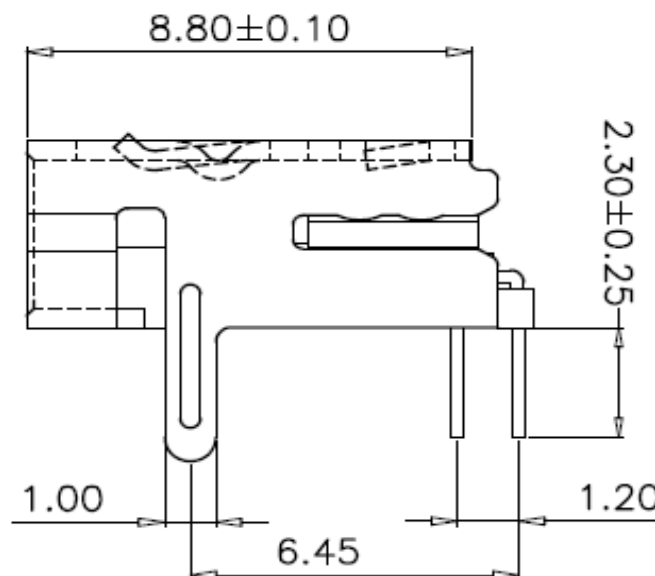
| | |
|------------------------|------------------|
| Voltage Rating: | 30 VAC |
| Current Rating: | 1,0A |
| Operating Temperature: | -.55°C to + 85°C |
| Contact Resistance: | 50m Ohm max. |
| Withstanding Voltage: | 100VAC min. |
| Insulation Resistance: | >100M Ohm min. |
| Contact Thickness: | 0,25mm |

Material:

| | |
|-------------------|------------------|
| Insulator : | look order code |
| Color: | look order code |
| Contact Material: | look order code |
| Contact Type: | Stamped |
| Contact Plating: | look order code |
| Shielding: | look order code |
| Lifetime: | 5000 cycles min. |
| Force: | 35N Max. |



Drawing (dimensions all into mm)



THT Mini USB Connector 5P B-Type Female Type Right Angle DIP 2 Legs

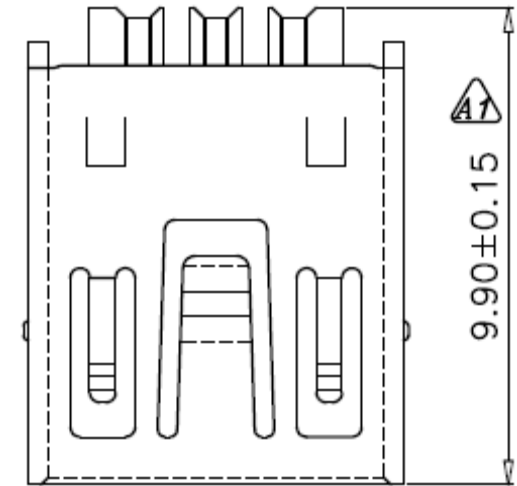
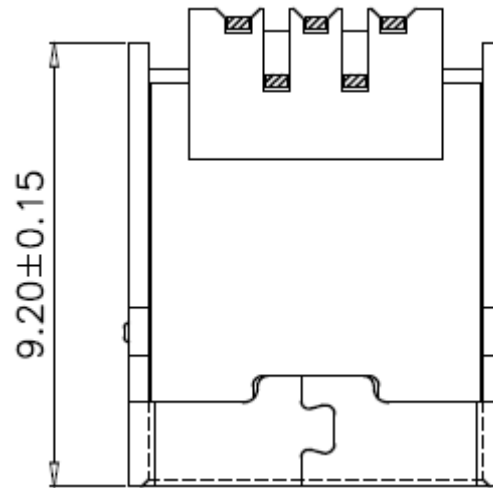
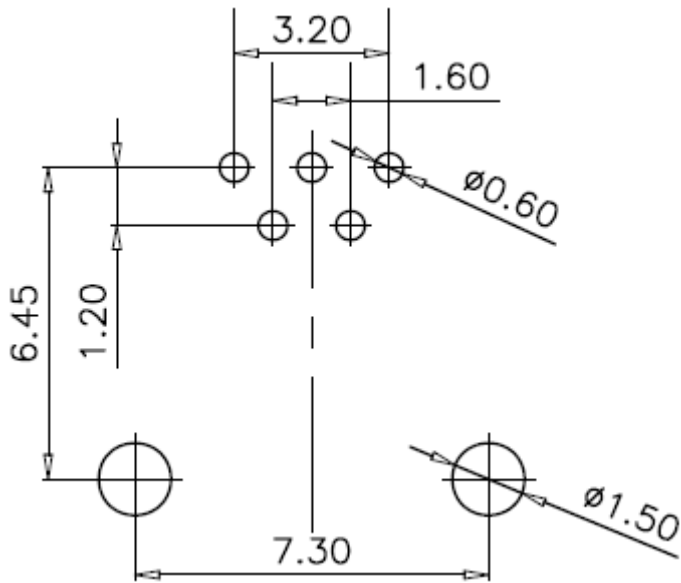
Part No.: **T64101**

| | | | | | | | | | | |
|-------|--------|------|--------|--------|--------|-----------|-----------|----------|------------|-----------|
| DRW: | Jason | CHKD | Wilson | MATL: | Wilson | TOLERANCE | Mason | DATE | 24.08.2015 | Customer: |
| APPD: | Schumi | | | FINISH | Jamy | | Sheet No. | 1 from 4 | | |

EDCON-COMPONENTS



PCB Layout



THT Mini USB Connector 5P B-Type Female Type Right Angle DIP 2 Legs

Part No.: **T64101**

Customer:

| | | | | | | | | | |
|-------|--------|------|--------|--------|--------|-----------|-----------|----------|------------|
| DRW: | Jason | CHKD | Wilson | MATL: | Wilson | TOLERANCE | Mason | DATE | 24.08.2015 |
| APPD: | Schumi | | | FINISH | Jamy | | Sheet No. | 2 from 4 | |

EDCON-COMPONENTS



Ordering Informations

| Serie | Color Inside | Shell Material | Insulator Material | Contact Material | Contact Plating | Special function | Packing | Packing | | |
|---------------|--------------|----------------|--------------------|------------------|-----------------|------------------|----------|-----------|--|--|
| T64101 | BK | B | P | B | G0 | 0 | R | BU | | |

| | | | | | | | |
|------------------------|---------------------------|------------------------|---------------------------|----------------------------------|-------------------------------|--|--|
| BK= Black Color | B= Brass | P= PBT + 30% GF | B= Brass | G0= Gold Flash (Standard) | 0= No Special function | R= ROHS conform N= NON ROHS conform | BU= Bulk Ware |
| WH= White Color | I= Iron | L= LCP | P= Phosphor Copper | G1= 3μ Gold | | | TR= Tape / Reel w. Pic and Place Foil |
| | S= Stainless Steel | | | G1= 5μ Gold | | | |
| | | | | G1= 10μ Gold | | | |
| | | | | G1= 15μ Gold | | | |
| | | | | G1= 30μ Gold | | | |
| | | | | | IV= Individual Packing | | |

PIC and PLACE FOIL for automatic assembly machine



THT Mini USB Connector 5P B-Type Female Type Right Angle DIP 2 Legs

Part No.: **T64101**

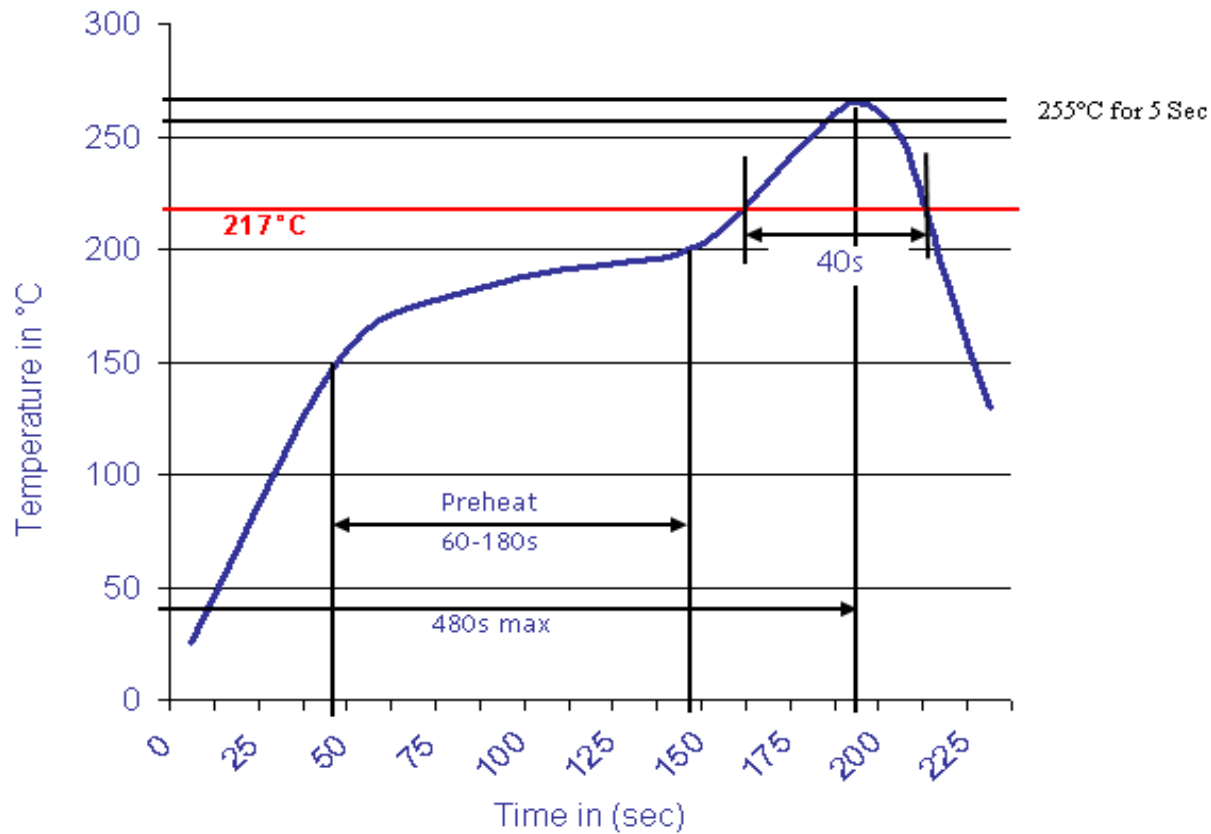
| | | | | | | | | | |
|-------|--------|------|--------|--------|--------|-----------|-----------|------|------------|
| DRW: | Jason | CHKD | Wilson | MATL: | Wilson | TOLERANCE | Mason | DATE | 24.08.2015 |
| APPD: | Schumi | | | FINISH | Jamy | | Sheet No. | | 3 from 4 |

Customer:



Soldering Profile Curve

Classification Reflow Profile (JEDEC J-STD-020C)



TH1 Mini USB Connector
5P B-Type Female Type
Right Angle DIP 2 Leas
 Part No.: **T64101**

| | | | | | | | | | | |
|-------|--------|------|--------|--------|--------|-----------|-----------|----------|------------|-----------|
| DRW: | Jason | CHKD | Wilson | MATL: | Wilson | TOLERANCE | Mason | DATE | 24.08.2015 | Customer: |
| APPD: | Schumi | | | FINISH | Jamy | | Sheet No. | 4 from 4 | | |