

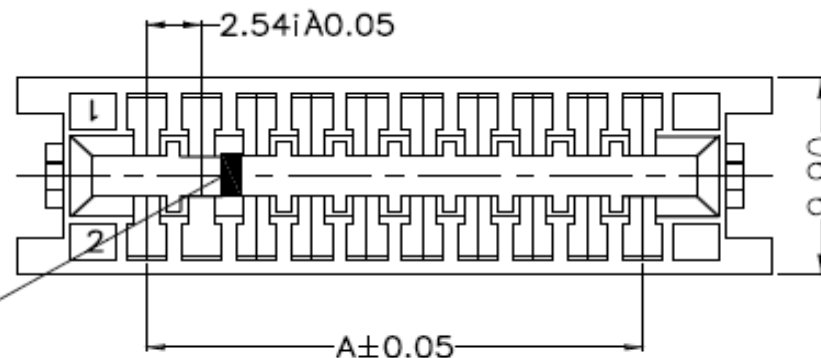
# EDCON-COMPONENTS



## Specifications

Circuit: 10~64Pos.  
 Material: PBT + 30& GF (UL94V-0)  
 High reliable, double, loop contact, which ensure redundancy,  
 and optimum electrical performance, Foreasy insertions and  
 extraction to PC card without damaging.  
 Current Rating: 1A AC/DC  
 Voltage Rating: 250VAC Maximum  
 Temperatur Range: -40°C ~ +105°C  
 Contact Resistance: Initial Value 10mΩ max. After  
 environmental testing / 20mΩ max.  
 Insualtion resistance: 1000MΩ min  
 Withstanding Voltage: 500VAC/minute  
 For Flat Cable with pitch 1,27mm

## Drawing



此处分  
有档和无档

**IDC-Card Edge Connector  
Pitch 2,54mm**

Part No.: **T63008**

Customer:

DRW:	Jason	CHKD	Wilson	MATL:	Wilson	TOLERANCE	Mason	DATE	07.01.2015
APPD:	Schumi			FINISH	Jamy		Sheet No.	1 from 3	

[www.edcon-components.com](http://www.edcon-components.com)

email: [info@edcon-components.com](mailto:info@edcon-components.com)



# EDCON-COMPONENTS



## Ordering Informations

Serie	No. of Pos.	Contact Plating	Material	Color of Body	Strain Relief	ROHS	Packing			
<b>T63008</b>	<b>010</b>	<b>S0</b>	<b>PB</b>	<b>BK</b>	<b>N</b>	<b>R</b>	<b>TY</b>			

<b>XXX=</b> look table	<b>G0=</b> Gold Flash	<b>PB=</b> PBT	<b>BK=</b> Black	<b>N=</b> w/o strain Relief	<b>N=NO</b> ROHS conform	<b>BU=</b> Bulk
	<b>T0=</b> Tin plated		<b>BL=</b> Blue	<b>Y=</b> with strain Relief		<b>TU=</b> Tube
	<b>GA=</b> 3µ Gold Plating		<b>GY=</b> Gray		<b>R=ROHS</b> conform	<b>TY=</b> Tray Packing
	<b>GB=</b> 5µ Gold Plating					
	<b>GC=</b> 10µ Gold Plating					
	<b>GD=</b> 30µ Gold Plating					
	<b>S0=</b> Selectiv Plating Gold Flash / Tin					

**IDC-Card Edge Connector  
Pitch 2,54mm**

Part No.: **T63008**

DRW:	Jason	CHKD	Wilson	MATL:	Wilson	TOLERANCE	Mason	DATE	07.01.2015	Customer:
APPD:	Schumi			FINISH	Jamy		Sheet No.	3 from 3		

[www.edcon-components.com](http://www.edcon-components.com)

email: [info@edcon-components.com](mailto:info@edcon-components.com)