

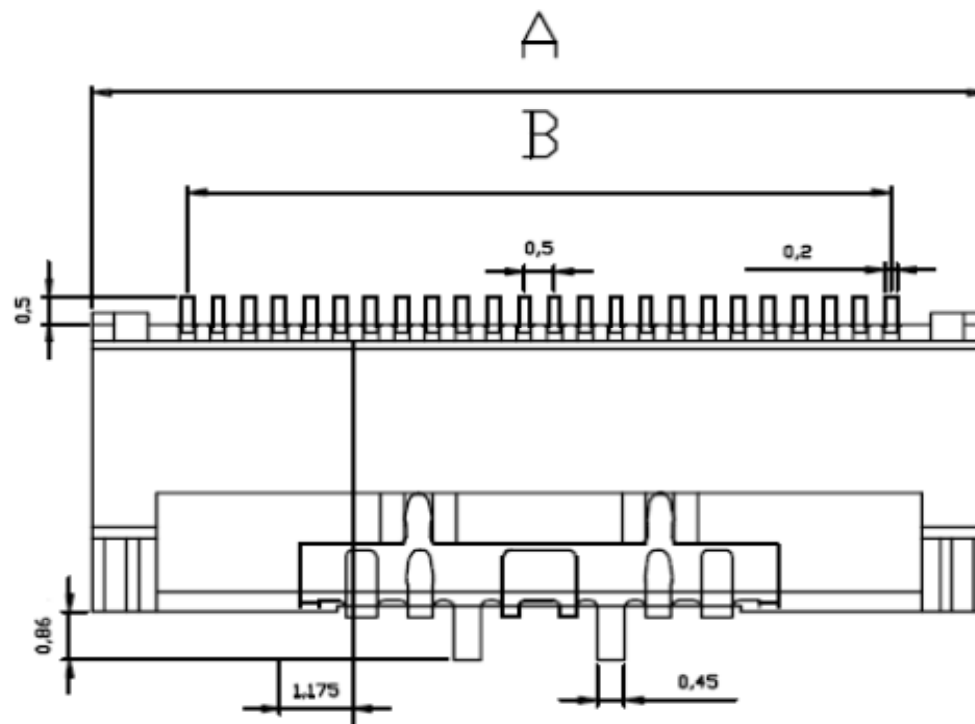
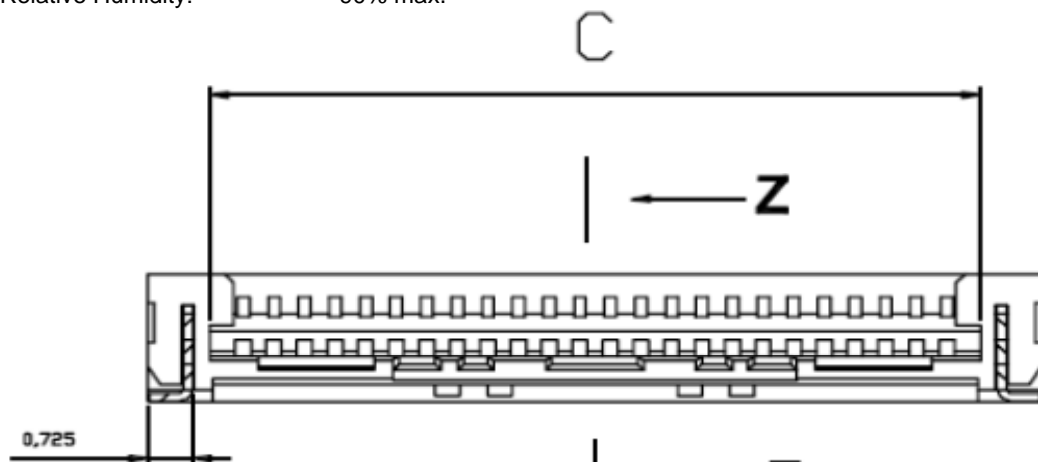
# EDCON-COMPONENTS



## Specifications

Material Housing	LCP
	Color Natural
Material Latch:	PPS
	Color Black
Terminal:	Phosphor Bronze
Fitting Nail:	Bronze Matte / Tin plated
Plating Finish:	Matt Tin / Gold flash overall
Fitting Nail:	Matt Tin overall
Electrical:	
Current Rating:	0,5A/ VAC/DC
Voltage Rating:	50V AC/DC
Temperature Range:	.- 25°C ~ +85°C
Contact Resistance:	<40m Ohm max.
Insulation Resistance:	>500M Ohm min.
Withstanding Voltage:	150V AC/Minute
Relative Humidity:	90% max.

## Technical Drawing



**LVDS, ZIF FFC/FPC Connector  
Pitch 0,5mm Downside Contact**

Part No.: **T28H010-**

Customer:

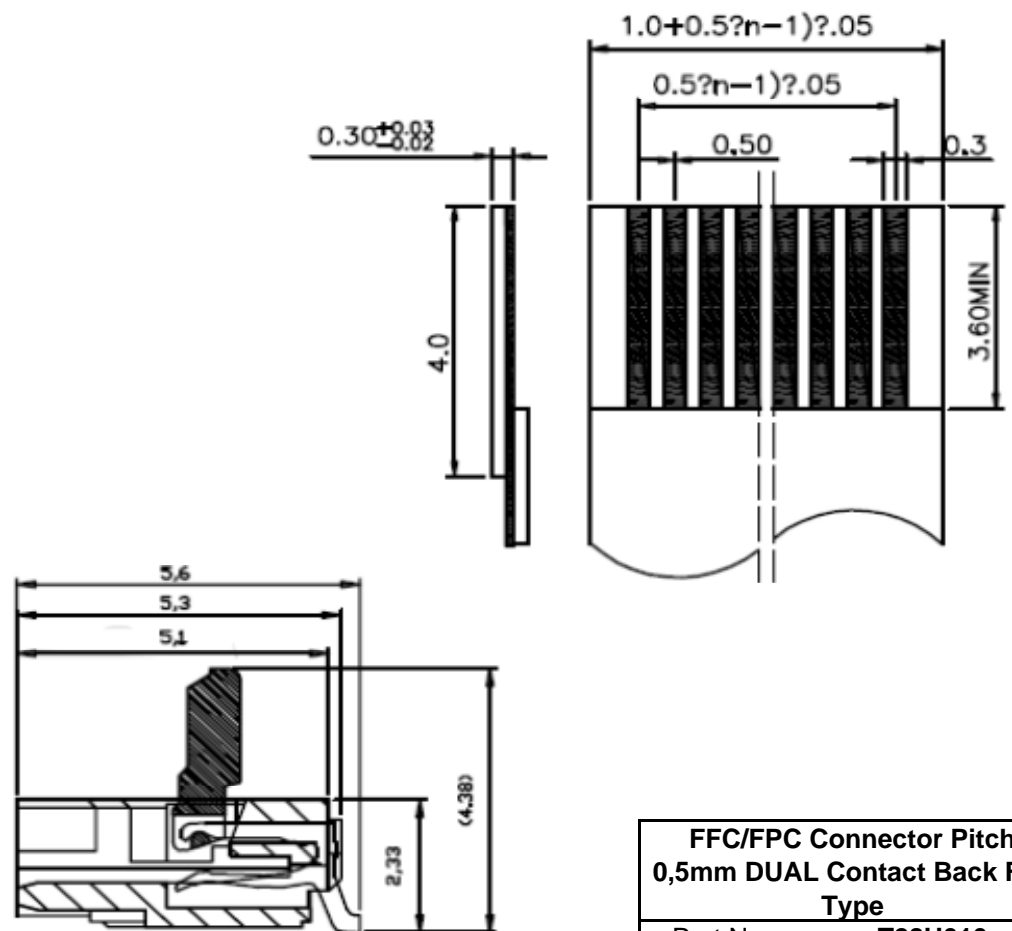
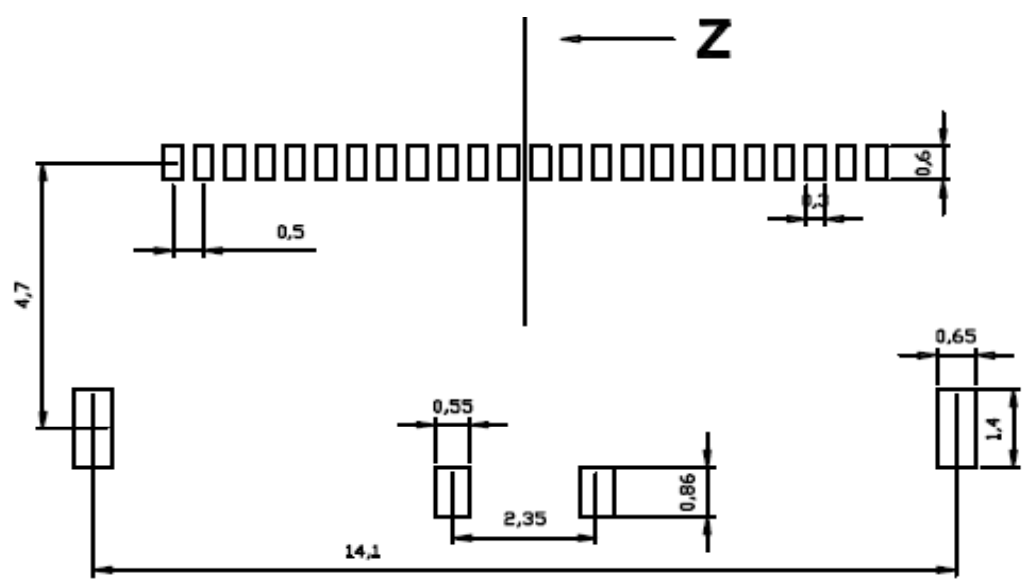
DRW:	Jason	CHKD	<b>Unless Otherwise specified tolerance ( mm)</b>				DATE	28.02.2017
APPD:	Schumi	Mason	X. ± 0,35	X.X ± 0,25	X.XX ± 0,20	X.XXX ± 0,15	Sheet No.	1 from 5

# EDCON-COMPONENTS



## Technical Drawing

### PCB Layout



**FFC/FPC Connector Pitch  
0,5mm DUAL Contact Back Flip  
Type**

Part No.: **T28H010-**  
Customer:

DRW:	Jason	CHKD	<b>Unless Otherwise specified tolerance ( mm)</b>				DATE	28.02.2017
APPD:	Schumi	Mason	X. ± 0,35	X.X ± 0,25	X.XX ± 0,20	X.XXX ± 0,15	Sheet No.	2 from 5

[www.edcon-components.com](http://www.edcon-components.com)

email: [info@edcon-components.com](mailto:info@edcon-components.com)



# EDCON-COMPONENTS



## Ordering Informations

Serie	No. of Pos.	Construction	Contact Plating	Material	Special function	Special function	ROHS	Packing		
<b>T28H010-</b>	<b>xx</b>	<b>RS</b>	<b>T0</b>	<b>TP</b>	<b>0</b>	<b>0</b>	<b>R</b>	<b>TR</b>		

XX= total		<b>G0</b> = Gold Flash		<b>0</b> = No function	<b>0</b> = No function	<b>N</b> =NON ROHS conform	
		<b>T0</b> = Tin plated	<b>TP</b> = themoplastic UL94V-0				<b>TU</b> = Tube
							<b>R</b> =ROHS conform
	<b>RS</b> = Right angle SMT						

**LVDS, ZIF FFC/FPC Connector  
Pitch 0,5mm Downside Contact**

Part No.: **T28H010-**

DRW:	Jason	CHKD	<b>Unless Otherwise specified tolerance ( mm)</b>				DATE	28.02.2017
APPD:	Schumi	Mason	X. ± 0,35	X.X ± 0,25	X.XX ± 0,20	X.XXX ± 0,15	Sheet No.	4 from 5

Customer:  
email: info@edcon-components.com

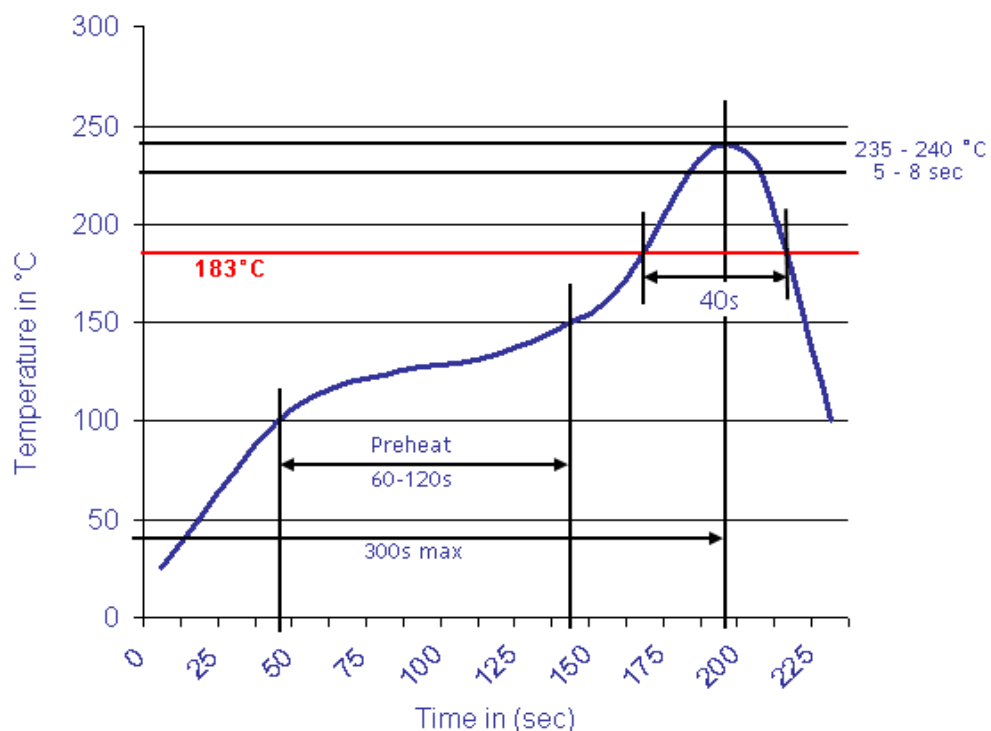
[www.edcon-components.com](http://www.edcon-components.com)



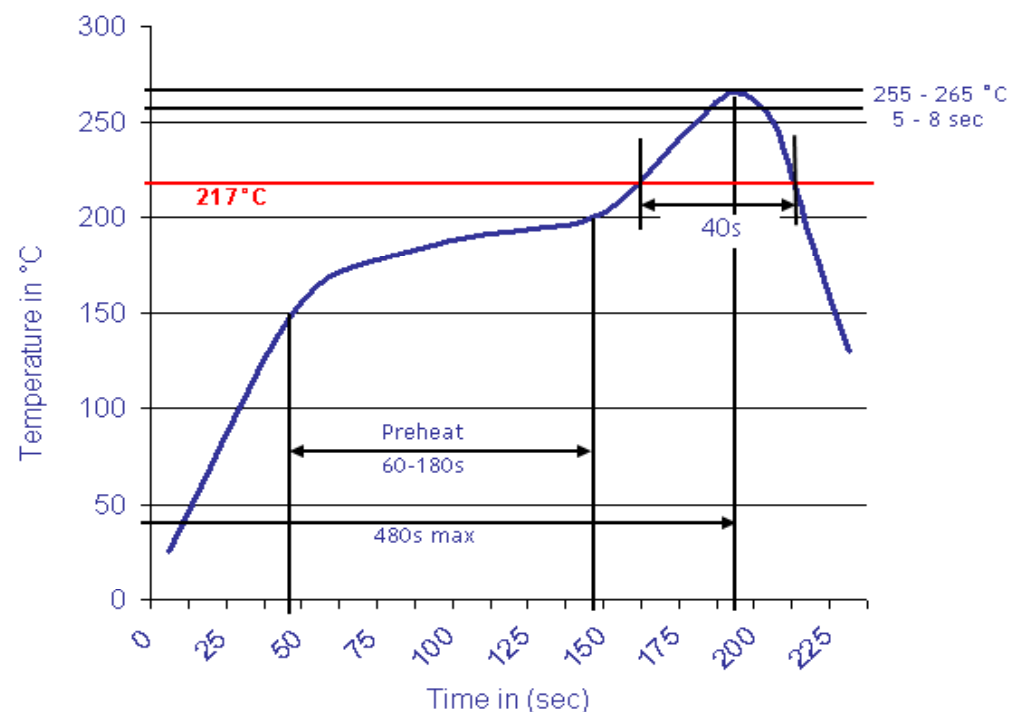
Lead Solder Curve

Lead free Solder Curve

Classification Reflow Profile (JEDEC J-STD-020C)



Classification Reflow Profile (JEDEC J-STD-020C)



LVDS, ZIF FFC/FPC Connector  
Pitch 0,5mm Downside Contact

Part No.: T28H010-

Customer:

DRW:	Jason	CHKD	Unless Otherwise specified tolerance ( mm)				DATE	28.02.2017
APPD:	Schumi	Mason	X. ± 0,35	X.X ± 0,25	X.XX ± 0,20	X.XXX ± 0,15	Sheet No.	5 from 5