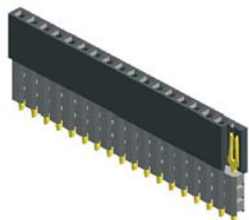


# EDCON-COMPONENTS



**Contact**



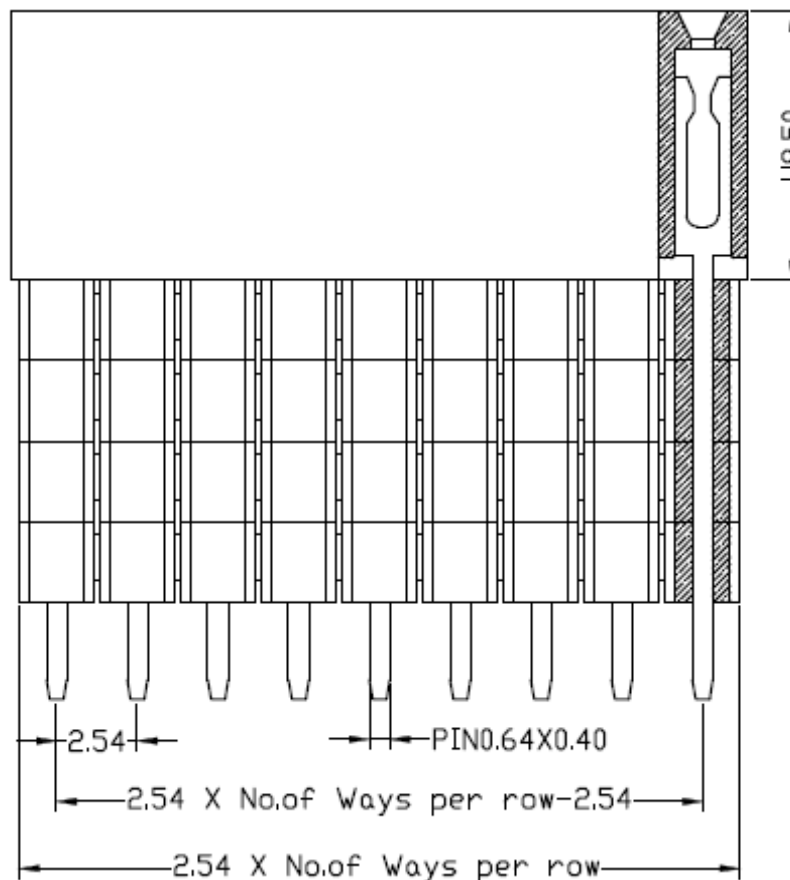
## Specifications

Current Rating:	3 Ampere
Insulator Resistance:	5000 Megaohm min.
Contact Resistance	20m Ohm max.
Dielectric Withstanding:	AC 500V
Operating Temperature:	.-65°C to +125°C
Contact Material:	Brass
Insulator Material:	
Standard:	P.B.T.
Contact Plating:	Tin, Gold or Selective Plated
Standard:	Gold Flash Overall

## P.C.B Layout



## Drawing



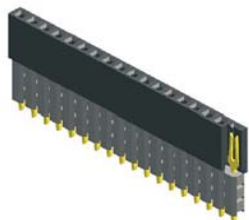
**Female Header Pitch  
2,54mm**

Part No.: **T27A1113-**

Customer:

DRW:	Jason	CHKD	Wilson	MATL:	Wilson	TOLERANCE	Mason	DATE	01.10.2017
APPD:	Schumi			FINISH	Jamy		Sheet No.		1 from 4

# EDCON-COMPONENTS

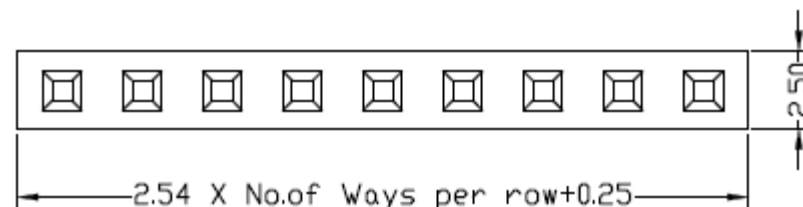
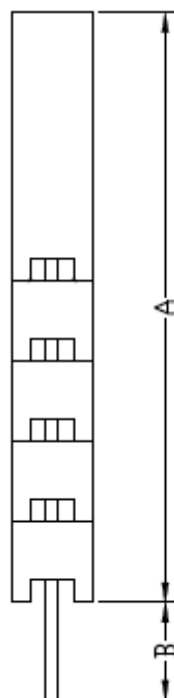


**Contact**



## Pin Code length table free configuration

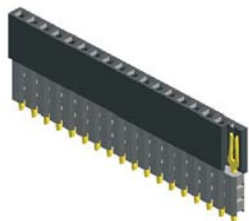
Order Code	Dimension (mm)			
	A	B		
A01	11,00	2,30		
A02	11,00	5,50		
A03	11,00	7,35		
A04	11,00	12,20		
A05	13,58	2,85		
A06	13,58	4,85		
A07	13,58	9,65		
A08	16,12	2,30		
A09	16,12	7,10		
A10	18,67	4,60		
A11				
A12				
A13				
A14				
A15				
A16				
A17				
A18				
A19				
A20				
A21				
A22				



<b>Female Header Pitch 2,54mm</b>	
Part No.:	<b>T27A1113-</b>
Customer:	

DRW:	Jason	CHKD	Wilson	MATL:	Wilson	TOLERANCE	Mason	DATE	01.10.2017
APPD:	Schumi			FINISH	Jamy		Sheet No.		2 from 4

# EDCON-COMPONENTS



**Contact**



## Ordering Informations

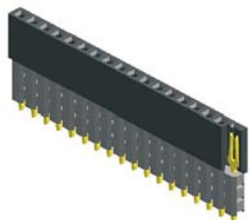
Serie	No. of Pos.	Construction	Contact Plating	Material	Special function	Pin Length Code	ROHS	Packing		
<b>T27A1113-</b>	<b>XX</b>	<b>ST</b>	<b>G0</b>	<b>PB</b>	<b>N</b>	<b>A01</b>	<b>R</b>	<b>BU</b>		

<b>XX</b> = Total Pin 02~ 40	<b>ST</b> = Straight THT	<b>G0</b> = Gold Flash (Standard)	<b>PB</b> = P.B.T	<b>N</b> = No spec. function	siehe Table No. 1	<b>N</b> =NO ROHS conform	<b>BU</b> = Bulk (Standard)
		<b>T0</b> = Tin plated	<b>NY</b> = Nylon-6T				<b>R</b> = ROHS conform
		<b>GA</b> = 10µ Gold Plating	<b>PA</b> = PA-46	<b>PT</b> = PA-6T	<b>TC</b> = Tube w. pic and Place Cap		
		<b>GB</b> = 15µ Gold Plating	<b>TR</b> = Tape/Reel w. pic and Place Cap				
		<b>GC</b> = 20µ Gold Plating					
		<b>S0</b> = Selectiv Plating Gold Flash / Tin					
<b>TN</b> = Tin Plated							

<b>Female Header Pitch 2,54mm</b>	
Part No.:	<b>T27A1113-</b>
Customer:	

DRW:	Jason	CHKD	Wilson	MATL:	Wilson	TOLERANCE	Mason	DATE	01.10.2017
APPD:	Schumi			FINISH	Jamy		Sheet No.		3 from 4

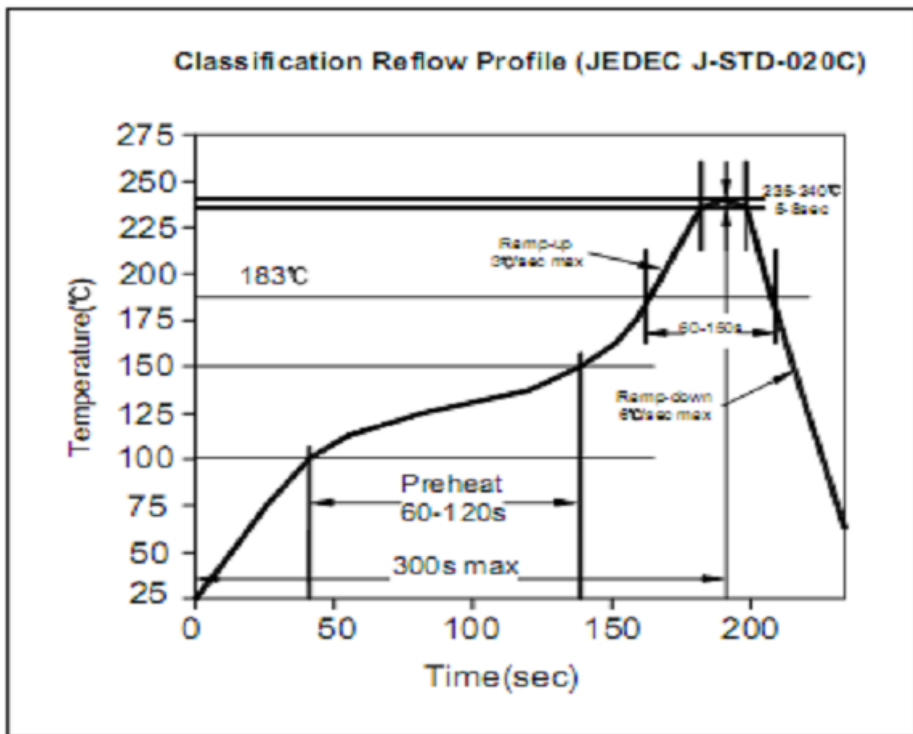
# EDCON-COMPONENTS



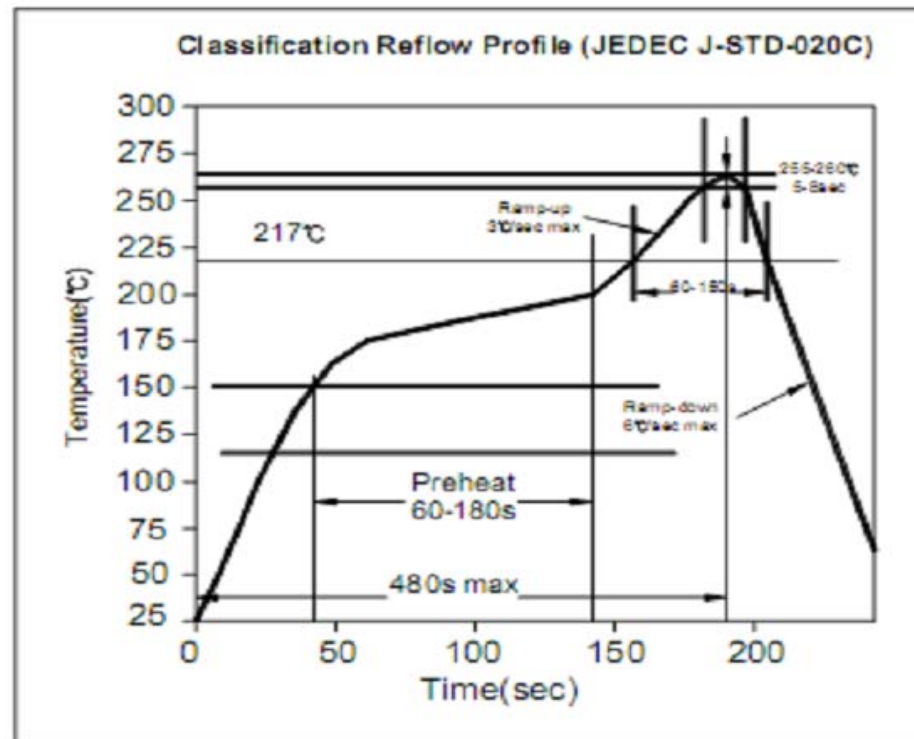
**Contact**



## Soldering Profile for Lead Soldering ( P.B.T. )



## Soldering Profile for Lead Free Soldering ( Nylon 6T )



**Female Header Pitch  
2,54mm**

Part No.: **T27A1113-**

DRW:	Jason	CHKD	Wilson	MATL:	Wilson	TOLERANCE	Mason	DATE	01.10.2017	Customer:
APPD:	Schumi			FINISH	Jamy		Sheet No.	4 from 4		