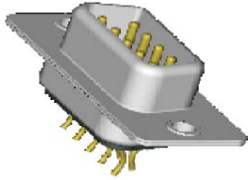


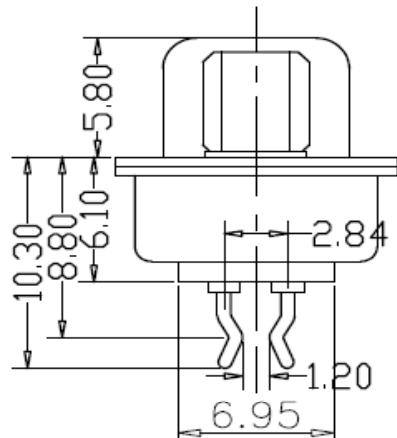
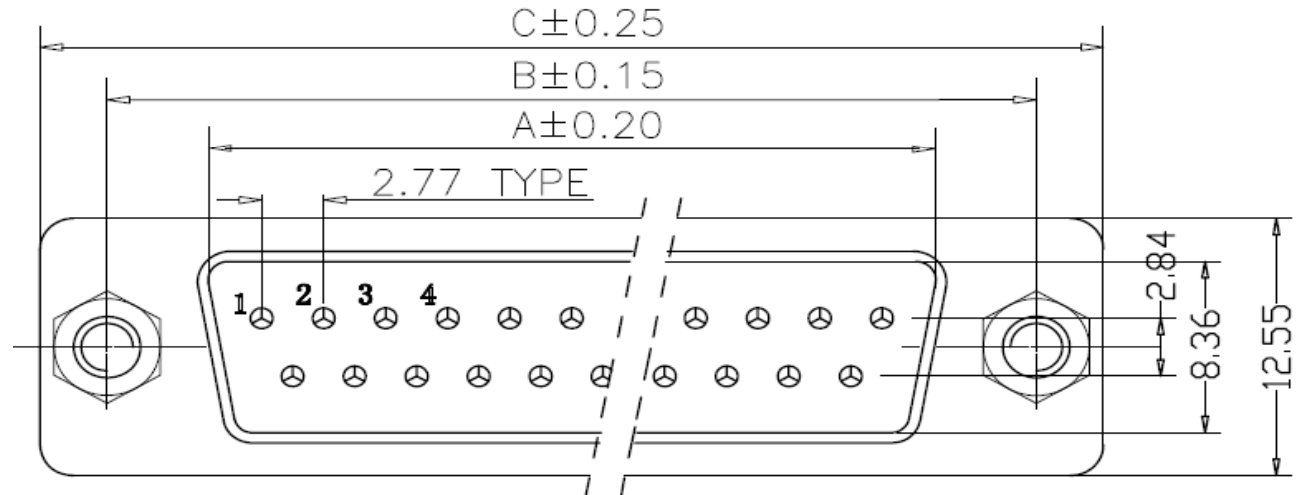
# EDCON-COMPONENTS



## Specifications

SHELL	Steel Nickel Finished
Insulator:	PBT Themoplastic 305 Glass Fib
Contact Material:	Brass or Bronze
Contact plating Standard:	Selectiv Gold finished
Electrical Characteristics:	
Current Rating:	5,0A
Contact Resistance:	20m Ohm Max.
Dielectric Voltage:	500VAC max.
Insulation Resistance:	1000 M Ohm min.
Temperature Rating:	.-55°C to + 105°C

## Drawing ( dimensions all into mm)

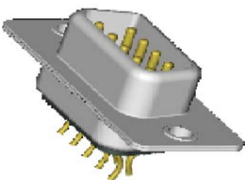


D-SUB-Connector Straddle  
Type Machined Contact

Part No.: **T24G900**

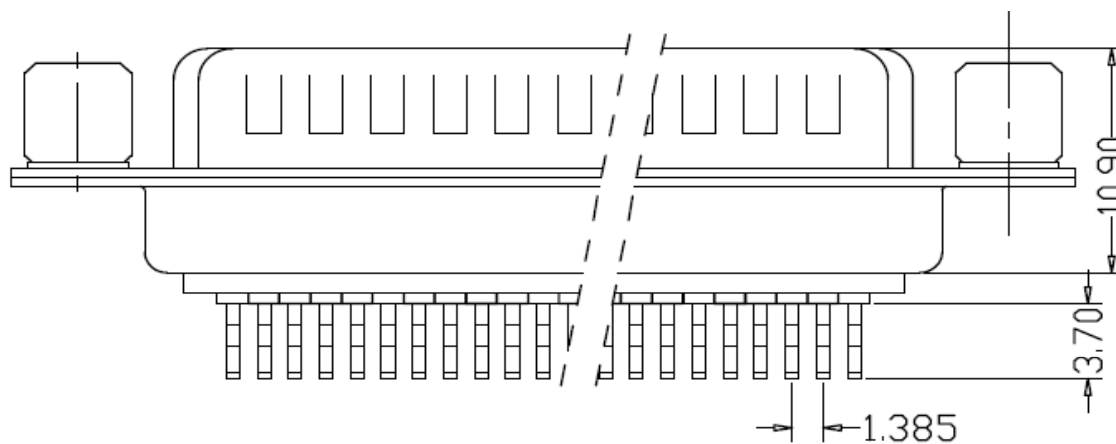
Customer:

DRW:	Jason	CHKD	Wilson	MATL:	Wilson	TOLERANCE	Mason	DATE	03.04.2018
APPD:	Schumi			FINISH	Jamy		Sheet No.	1 from 4	

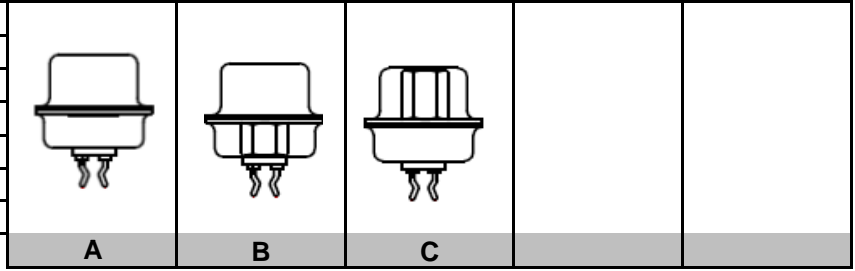


Dimension Information about Housing

Pos.	Dimension (mm)		
	A	B	C
9	16,92	24,99	30,80
15	25,25	33,32	39,10
25	38,96	47,04	53,00
37	55,42	63,50	69,30



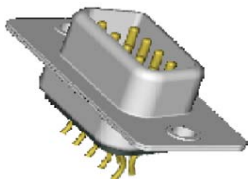
Mounting Options



D-SUB-Connector Straddle Type Machined Contact	
Part No.:	<b>T24G900</b>
Customer:	

DRW:	Jason	CHKD	Wilson	MATL:	Wilson	TOLERANCE	Mason	DATE	03.04.2018
APPD:	Schumi			FINISH	Jamy			Sheet No.	2 from 4

# EDCON-COMPONENTS



## Ordering Informations

Serie	No of Position	Contact Type	Contact Plating	Mounting Options	Accessories	Body Colour	Shell Plating	Special function	ROHS	Packing Informations
<b>T24G900</b>	<b>09</b>	<b>M</b>	<b>G0</b>	<b>A</b>	<b>A0</b>	<b>BK</b>	<b>T</b>	<b>N</b>	<b>R</b>	<b>TY</b>

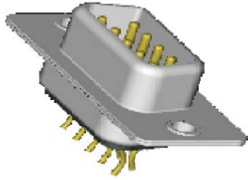
<b>09 to 37</b>	<b>M= Male Type</b>		<b>A= No accesories</b>	<b>A0= No accesories</b>	<b>BK= Black</b>	<b>T= tinned</b>	<b>N= no Special function</b>	<b>R= ROHS Conform</b> <b>N= NON ROHS Conform</b>	<b>TY= Tray Packing</b> <b>BU= Bulk Ware</b> <b>IV= Individual Package</b>
		<b>G0= Gold Flash</b>	<b>B= Rear Rivet</b>	<b>A1= Zinc alloy 4,8mm Nickel</b>	<b>BL= Blue</b>				
		<b>GA= 3µ Gold Flash</b>	<b>C= Front Rivet</b>	<b>A2= Zinc alloy 5,8mm Nickel</b>	<b>WH= White</b>				
		<b>GB= 5µ Gold Flash</b>		<b>B1= Iron 4,8mm Nickel</b>	<b>GY= Gray</b>				
		<b>GC= 10µ Gold Flash</b>		<b>B2= Iron 5,8mm Nickel</b>					
		<b>GD= 15µ Gold Flash</b>		<b>C1= Copper Screw 4,8mm</b>					
		<b>GE= 30µ Gold Flash</b>		<b>C2= Copper Screw 5,8mm</b>					

D-SUB-Connector Straddle Type Machined Contact

Part No.: **T24G900**

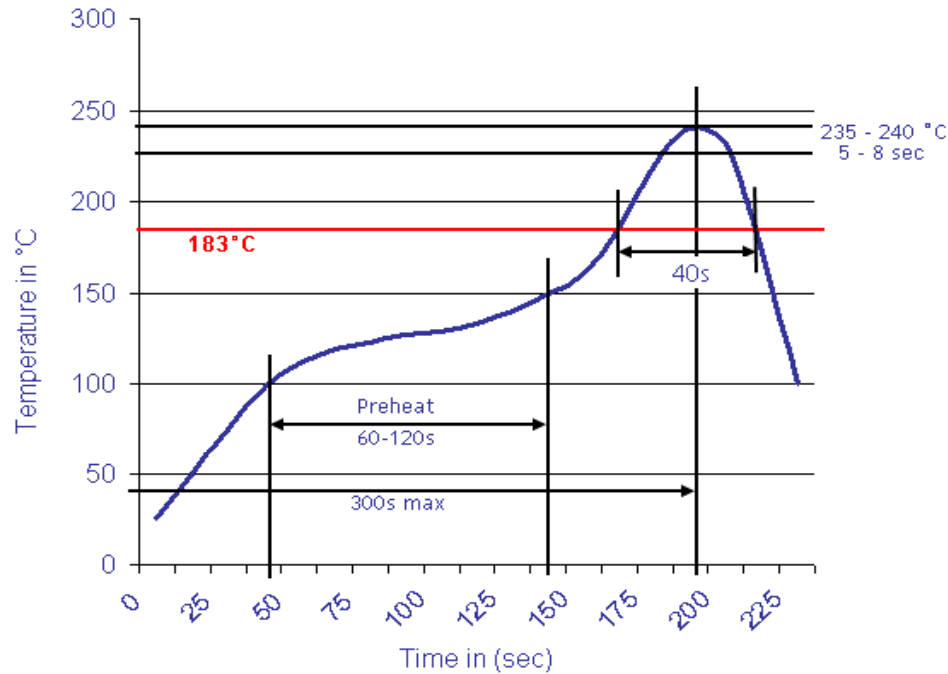
DRW:	Jason	CHKD	Wilson	MATL:	Wilson	TOLERANCE	Mason	DATE	03.04.2018
APPD:	Schumi			FINISH	Jamy		Sheet No.		3 from 4

Customer:



Soldering Profile Curve

Classification Reflow Profile (JEDEC J-STD-020C)



D-SUB-Connector Straddle  
Type Machined Contact

Part No.: **T24G900**

DRW:	Jason	CHKD	Wilson	MATL:	Wilson	TOLERANCE	Mason	DATE	03.04.2018
APPD:	Schumi			FINISH	Jamy		Sheet No.	4 from 4	

Customer: