

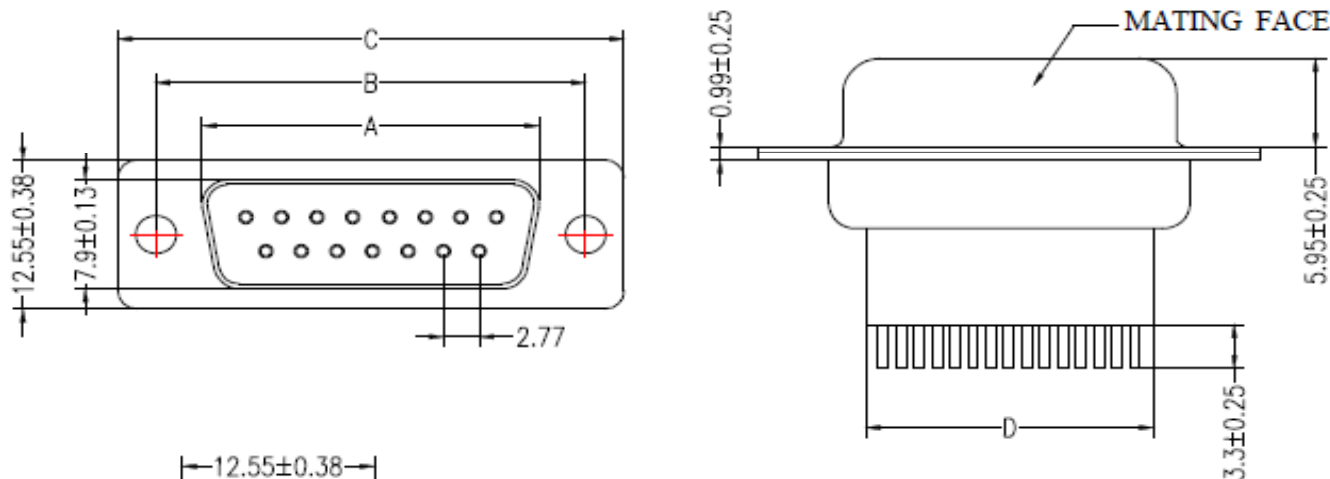
EDCON-COMPONENTS



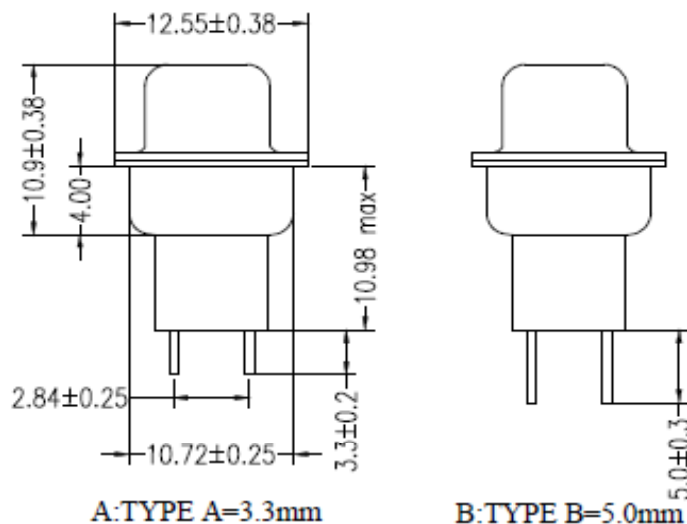
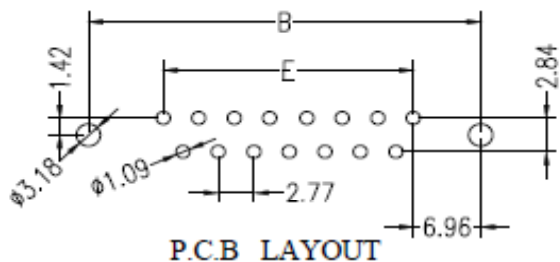
Specifications

SHELL	Steel Nickel Finished
Insulator:	PBT Themoplastic 305 Glass Fib
Contact Material:	Brass
Contact plating Standard:	Selectiv Gold finished
Grounding Bracket;	Brass tin finished like ordering
Electrical Characteristics:	
Current Rating:	5,0A
Contact Resistance:	30m Ohm Max.
Dielectric Voltage:	500VAC max.
Insulation Resistance:	1000 M Ohm min.
Temperature Rating:	-.55°C to + 105°C

Female Drawing (dimensions all into mm)



PCB Layout



D-SUB-Connector HIGH-Profile Stamped Contact

Part No.: **T24G800**

Customer:

DRW:	Jason	CHKD	Wilson	MATL:	Wilson	TOLERANCE	Mason	DATE	15.12.2019
APPD:	Schumi			FINISH	Jamy		Sheet No.		1 from 4

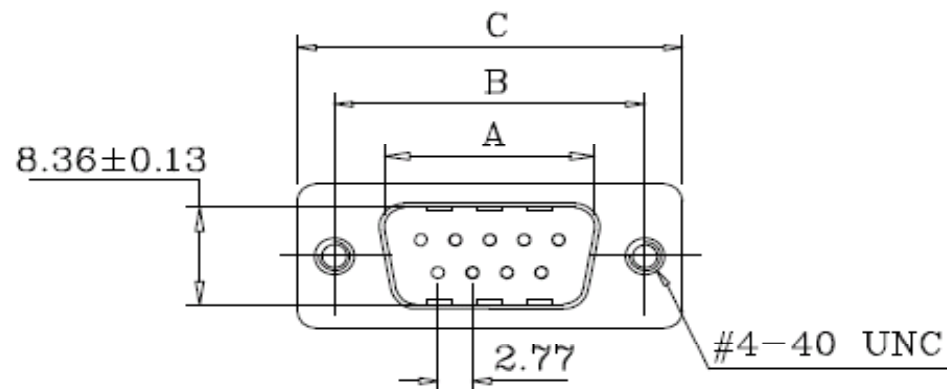
EDCON-COMPONENTS



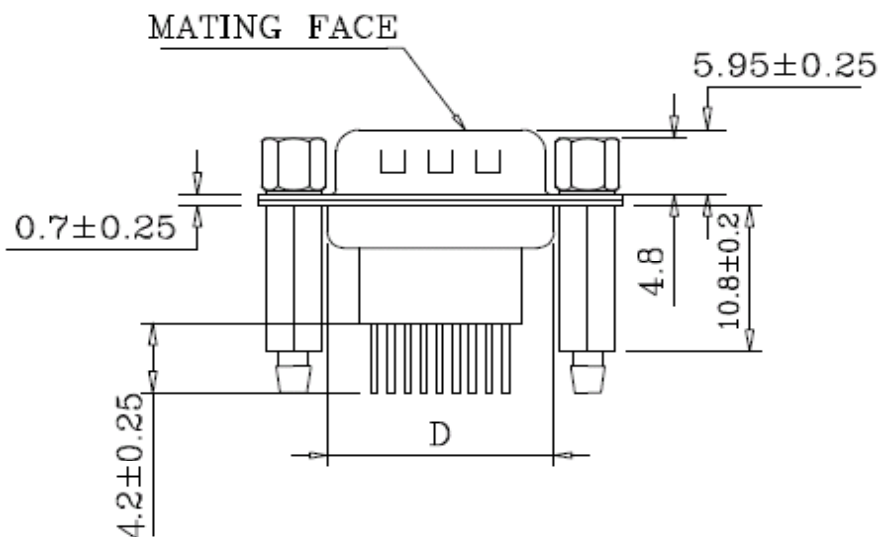
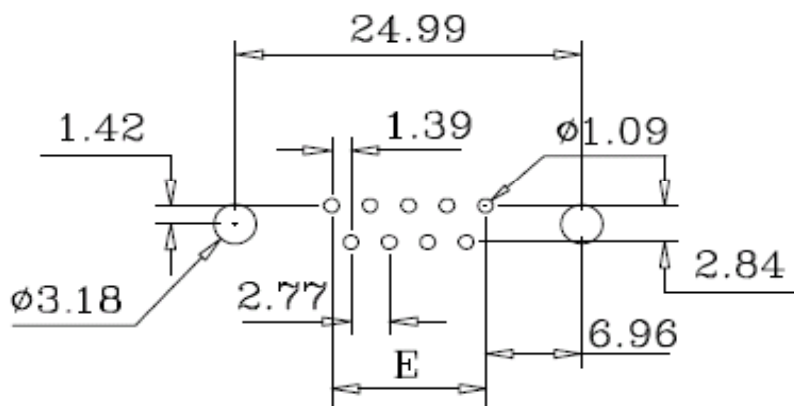
Specifications

SHELL	Steel Nickel Finished
Insulator:	PBT Themoplastic 305 Glass Fib
Contact Material:	Brass
Contact plating Standard:	Selectiv Gold finished
Grounding Bracket;	Brass tin finished like ordering
Electrical Characteristics:	
Current Rating:	5,0A
Contact Resistance:	30m Ohm Max.
Dielectric Voltage:	500VAC max.
Insulation Resistance:	1000 M Ohm min.
Temperature Rating:	-.55°C to + 105°C

Male Drawing (dimensions all into mm)



PCB Layout



D-SUB-Connector HIGH-Profile Stamped Contact

Part No.: **T24G800**

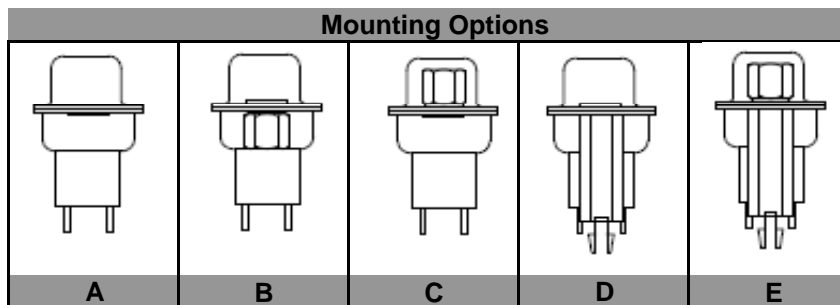
DRW:	Jason	CHKD	Wilson	MATL:	Wilson	TOLERANCE	Mason	DATE	15.12.2019
APPD:	Schumi			FINISH	Jamy		Sheet No.	1 from 4	Customer:



Dimension Information about Housing

Female Dimension (mm)						
Pos.	A	B	C	D	E	
9	16,33	24,99	30,81	19,28	11,08	
15	24,66	33,32	39,14	27,51	19,39	
25	38,38	47,04	53,04	41,28	33,24	
37	54,84	63,50	69,32	57,71	49,86	

Male Dimension (mm)						
Pos.	A	B	C	D	E	
9	16,92	24,99	30,81	19,28	11,08	
15	25,25	33,32	39,14	27,51	19,39	
25	38,96	47,04	53,04	41,28	33,24	
37	55,42	63,50	69,32	57,71	49,86	



D-SUB-Connector HIGH-Profile Stamped Contact	
Part No.:	T24G800
Customer:	

DRW:	Jason	CHKD	Wilson	MATL:	Wilson	TOLERANCE	Mason	DATE	15.12.2019
APPD:	Schumi			FINISH	Jamy		Sheet No.	2 from 4	

EDCON-COMPONENTS



Ordering Informations

Serie	No of Position	Contact Type	Contqct Plating	Mounting Options	Accessories	Body Colour	Special function	Special function	ROHS	Packing Information
-------	----------------	--------------	-----------------	------------------	-------------	-------------	------------------	------------------	------	---------------------

T24G800	-	09	F	S0	A	A0	BK	A	N	R	TY
----------------	---	-----------	----------	-----------	----------	-----------	-----------	----------	----------	----------	-----------

09 to 37	F= Female Type	S0= Selectiv Gold Flash	A= No accesories	A0= No accesories	BK= Black	A= Lead Length 3,3mm	N= no Special function	R= ROHS Conform	TY= Tray Packing
	M= Male Type	G0= Gold Flash	B= Rear Rivet	A1= Zinc alloy 4,8mm Nickel	BL= Blue				
		GA= 3µ Gold Flash	C= Front Rivet	A2= Zinc alloy 5,8mm Nickel	WH= White	B1= Iron 4,8mm Nickel	B2= Iron 5,8mm Nickel	IV= Individual Package	
		GB= 5µ Gold Flash	D= Groundstand - OFF on Rear side	C1= Copper 4,8mm Nickel	GY= Gray				
		GC= 10µ Gold Flash	E= Groundstand - OFF on Rear side included Front Rivet	C2= Copper 5,8mm Nickel					
		GD= 15µ Gold Flash							
		GE= 30µ Gold Flash							

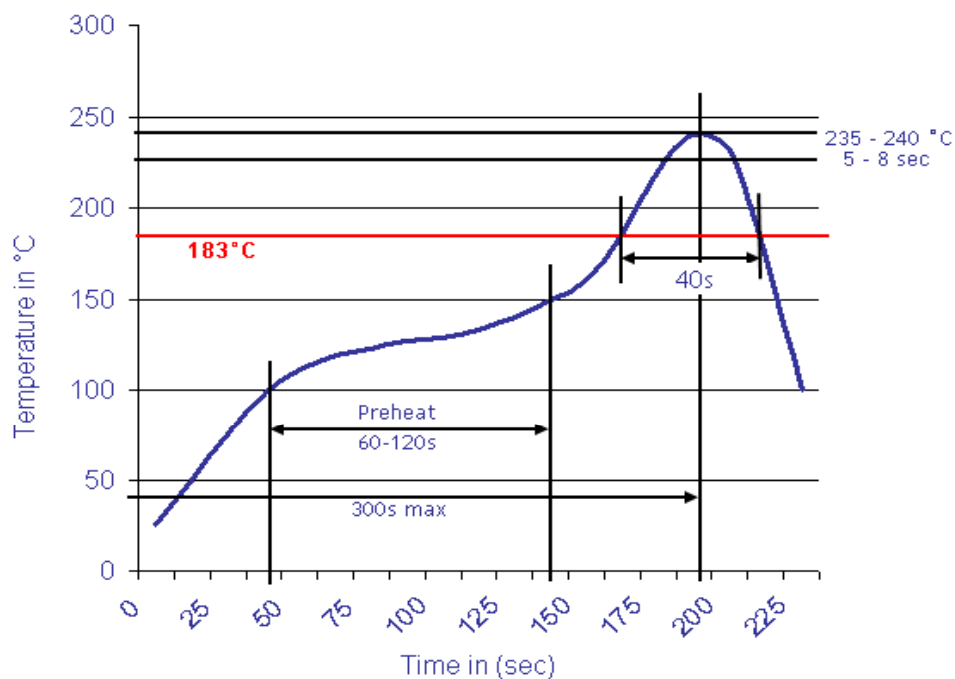
D-SUB-Connector HIGH-Profile Stamped Contact	
Part No.:	T24G800
Customer:	

DRW:	Jason	CHKD	Wilson	MATL:	Wilson	TOLERANCE	Mason	DATE	15.12.2019
APPD:	Schumi			FINISH	Jamy		Sheet No.		3 from 4



Soldering Profile Curve

Classification Reflow Profile (JEDEC J-STD-020C)



D-SUB-Connector HIGH-Profile Stamped Contact
Part No.: T24G800
Customer:

DRW:	Jason	CHKD	Wilson	MATL:	Wilson	TOLERANCE	Mason	DATE	15.12.2019
APPD:	Schumi			FINISH	Jamy		Sheet No.	4 from 4	