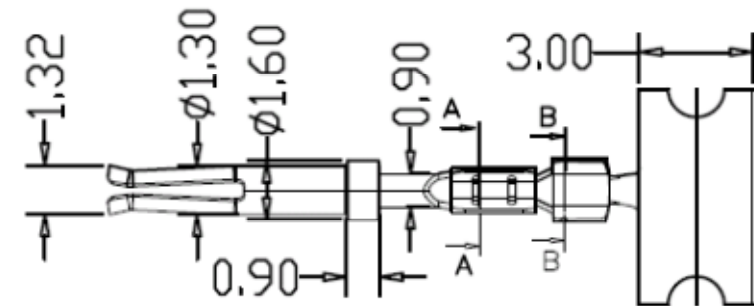
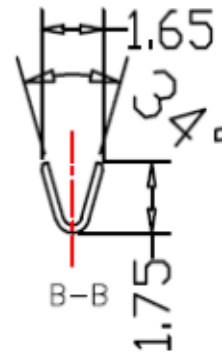
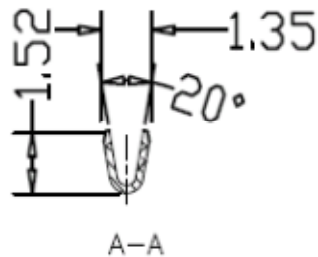
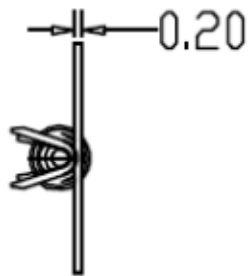
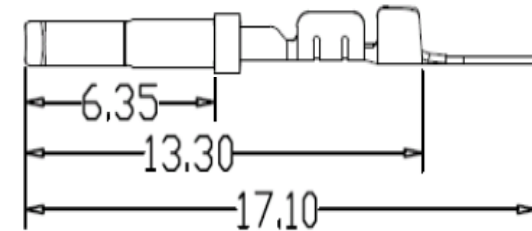
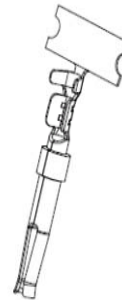




## Specifications

Voltage Rating:  
 Current Rating: 5A  
 Operating Temperature: -55°C to + 105°C  
 Contact Resistance: 20milliohms Max.  
 Withstanding Voltage: 500VAC for 1 Minute  
 Insulation Resistance: 1000 Mega Ohm min.  
 Contact Material: Brass or Bronze

## Female Drawing ( dimensions all into mm)



**Crimp Contact to EDCON Serie T23004**

Part No.: **T23005 -**

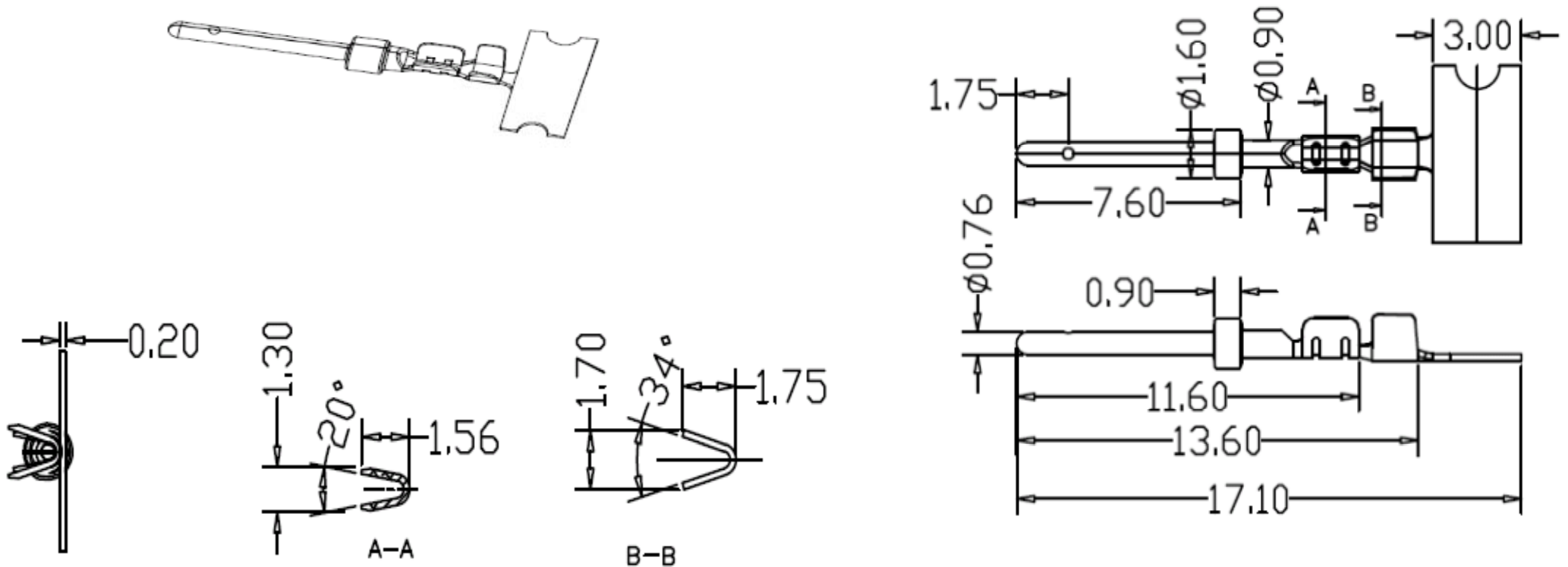
Customer:

DRW:	Jason	CHKD	Wilson	MATL:	Wilson	TOLERANCE	Mason	DATE	30.09.2019
APPD:	Schumi			FINISH	Jamy		Sheet No.		1 from 3

# EDCON-COMPONENTS



## Male Drawing ( dimensions all into mm)



<b>Crimp Contact to EDCON Serie T23004</b>	
Part No.:	<b>T23005 -</b>
Customer:	

DRW:	Jason	CHKD	Wilson	MATL:	Wilson	TOLERANCE	Mason	DATE	30.09.2019
APPD:	Schumi			FINISH	Jamy		Sheet No.		2 from 3

[www.edcon-components.com](http://www.edcon-components.com)

email: [info@edcon-components.com](mailto:info@edcon-components.com)

# EDCON-COMPONENTS



## Ordering Informations

Serie	Terminal Type	Contact Plating	Special function	Special function	ROHS	Packing			
<b>T23005 -</b>	<b>M</b>	<b>S0</b>	<b>N</b>	<b>N</b>	<b>R</b>	<b>BU</b>			

<b>M=</b> Male	<b>G0=</b> Gold Flash	<b>N=</b> No speical function	<b>N=</b> No speical function	<b>R=</b> ROHS Conform	<b>BU=</b> Bulk-Ware
<b>F=</b> Female	<b>G1=</b> 3µ Gold Flash			<b>N=</b> NON ROHS Conform	<b>TR=</b> Tape/Reel Packing
	<b>G2=</b> 5µ Gold Flash				
	<b>G3=</b> 10µ Gold Flash				
	<b>G4=</b> 15µ Gold Flash				
	<b>G5=</b> 30µ Gold Flash				
	<b>S0=</b> Selective flash Gold				
	<b>S1=</b> 3µ Selective Gold				
	<b>S2=</b> 5µ Selective Gold				
	<b>S3=</b> 10µ Selective Gold				
	<b>S4=</b> 15µ Selective Gold				
	<b>S5=</b> 30µ Selective Gold				

<b>Crimp Contact to EDCON Serie T23004</b>
Part No.: <b>T23005 -</b>
Customer:

DRW:	Jason	CHKD	Wilson	MATL:	Wilson	TOLERANCE	Mason	DATE	30.09.2019
APPD:	Schumi			FINISH	Jamy		Sheet No.		3 from 3