

EDCON-COMPONENTS



Technical Discription

Temperature Range: ABS= -40°C ~ +85°C

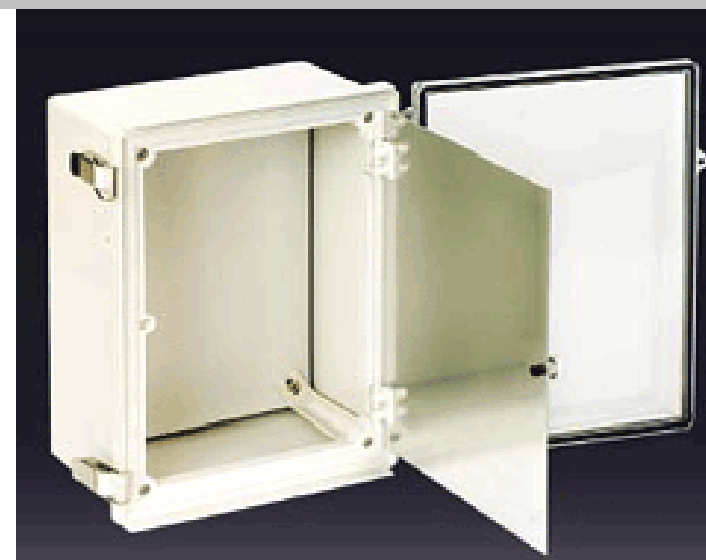
Protection Degree IP66-67

Luxury design, Soft opening and closing the dual door design.

EDCON box is designed to be able to completely prevent rain or dust from penetrating.

A hinge is attached to the product as a hinge unit and the major parts of draw latch are made of stainless steel to be solid.

Hinge connection pins and draw latch are made of stainless steel and plastic to prevent rust.



**Sealed Plastic Enclosure
300 x 400 x 180mm**

Part No.: **H44011**

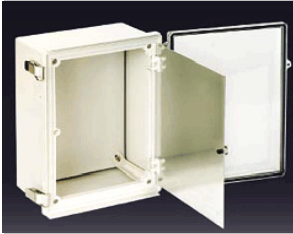
Customer:

DRW:	Jason	CHKD	Wilson	MATL:	Wilson	TOLERANCE	Mason	DATE	12.02.2010
APPD:	Schumi			FINISH	Jamy		Sheet No.	1 from 4	

www.edcon-components.com

email: info@edcon-components.com

EDCON-COMPONENTS



Technical Drawing



**Sealed Plastic Enclosure
300 x 400 x 180mm**

Part No.: **H44011**

Customer:

DRW:	Jason	CHKD	Wilson	MATL:	Wilson	TOLERANCE	Mason	DATE	12.02.2010
APPD:	Schumi			FINISH	Jamy		Sheet No.	2 from 4	

www.edcon-components.com

email: info@edcon-components.com

EDCON-COMPONENTS



Ordering Informations

Serie	Material Base	Color Base	Color Cover	ROHS	Packing					
-------	---------------	------------	-------------	------	---------	--	--	--	--	--

H44011	A	B	G	R	S					
---------------	----------	----------	----------	----------	----------	--	--	--	--	--

A= ABS	B= Beige	G= Gray	R= ROHS Conform	S= Standard Packing
		T= Transparent	N= NON ROHS Conform	I= Individual Packing

**Sealed Plastic Enclosure
300 x 400 x 180mm**

Part No.: **H44011**

DRW:	Jason	CHKD	Wilson	MATL:	Wilson	TOLERANCE	Mason	DATE	12.02.2010
APPD:	Schumi			FINISH	Jamy		Sheet No.		4 from 4

Customer:

www.edcon-components.com

email: info@edcon-components.com