

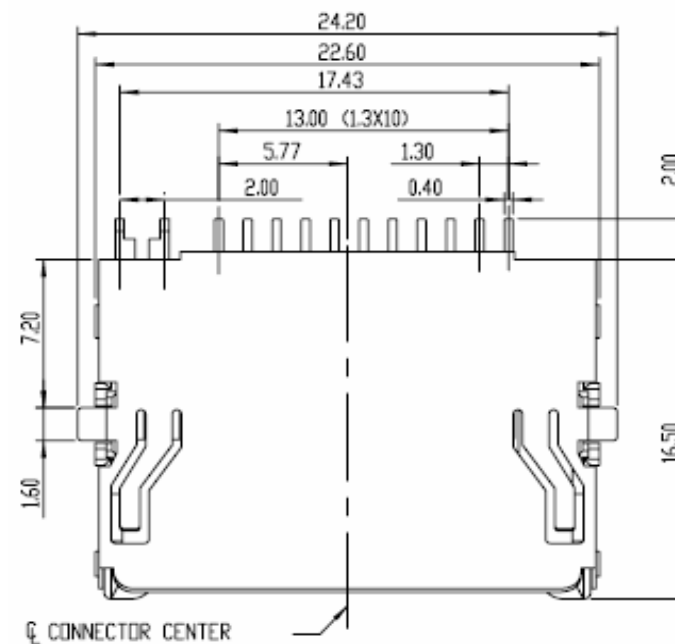
# EDCON-COMPONENTS



## Technical Discription

Insulator: LCP + 30%GF UL94V-0 Ra  
 Color: Black  
 Contact Material: Phosphor Bronze  
 Contact Area: Gold plating over Ni.  
 Solder Area: Tin plated over Ni.

MNSD1	CD/DAT3
MNSD2	CMD
MNSD3	VSS1
MNSD4	VDD
MNSD5	CLK
MNSD6	VSS2
MNSD7	DAT0
MNSD8	DAT1
MNSD9	DAT2
MNSD10	NC
MNSD11	NC



### MINI SD-CARD Connector

Part No.: **T58012**

Customer:

DRW:	Jason	CHKD	Wilson	MATL:	Wilson	TOLERANCE	Mason	DATE	03.11.2010
APPD:	Schumi			FINISH	Jamy		Sheet No.	1 from 4	

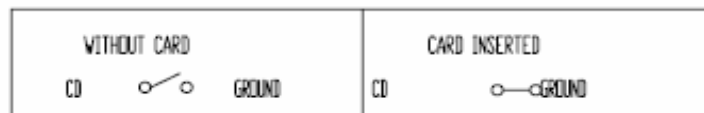
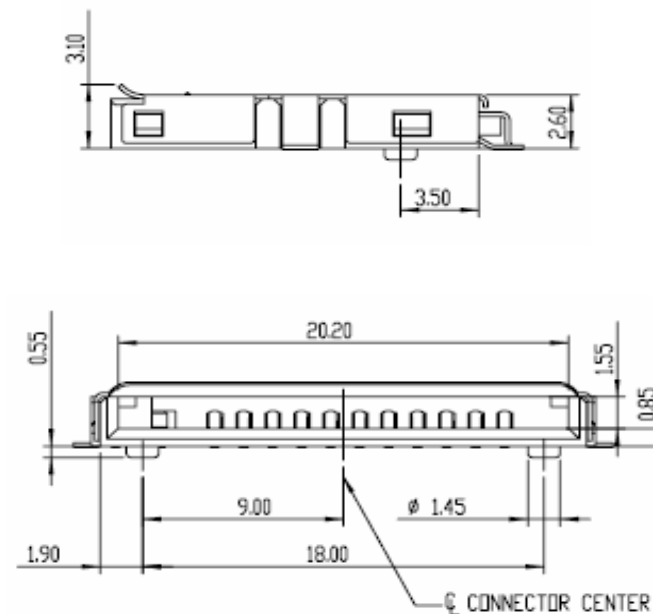
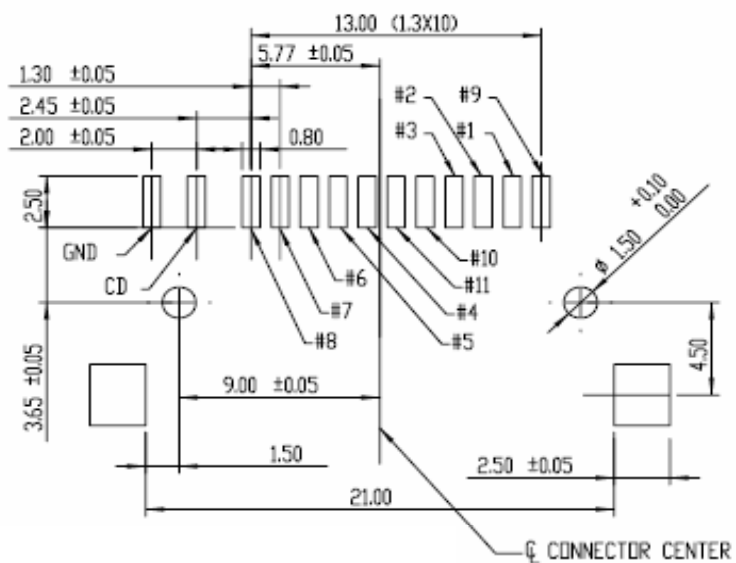
[www.edcon-components.com](http://www.edcon-components.com)

email: [info@edcon-components.com](mailto:info@edcon-components.com)

# EDCON-COMPONENTS



## PCB Layout



## MINI SD-CARD Connector

Part No.: **T58012**

DRW:	Jason	CHKD	Wilson	MATL:	Wilson	TOLERANCE	Mason	DATE	03.11.2010	Customer:
APPD:	Schumi			FINISH	Jamy		Sheet No.	2 from 4		

[www.edcon-components.com](http://www.edcon-components.com)

email: [info@edcon-components.com](mailto:info@edcon-components.com)

# EDCON-COMPONENTS



## Ordering Informations

Serie	Contact Plating	ROHS	Packing							
<b>T58012</b>	<b>A</b>	<b>R</b>	<b>TY</b>							

<b>A</b> = 15µ Gold Plating	<b>R</b> = ROHS Conform	<b>TY</b> = Tray Packing
<b>B</b> = 3µ Gold Plating	<b>N</b> = Non ROHS Conform	
<b>C</b> = 10µ Gold Plating		
<b>D</b> = Gold Flash Plating		

<b>MINI SD-CARD Connector</b>	
Part No.:	<b>T58012</b>
Customer:	

DRW:	Jason	CHKD	Wilson	MATL:	Wilson	TOLERANCE	Mason	DATE	03.11.2010
APPD:	Schumi			FINISH	Jamy			Sheet No.	3 from 4



Soldering Profile Curve

Classification Reflow Profile (JEDEC J-STD-020C)



**MINI SD-CARD Connector**

Part No.: **T58012**

DRW:	Jason	CHKD	Wilson	MATL:	Wilson	TOLERANCE	Mason	DATE	03.11.2010	Customer:
APPD:	Schumi			FINISH	Jamy		Sheet No.	4 from 4		