

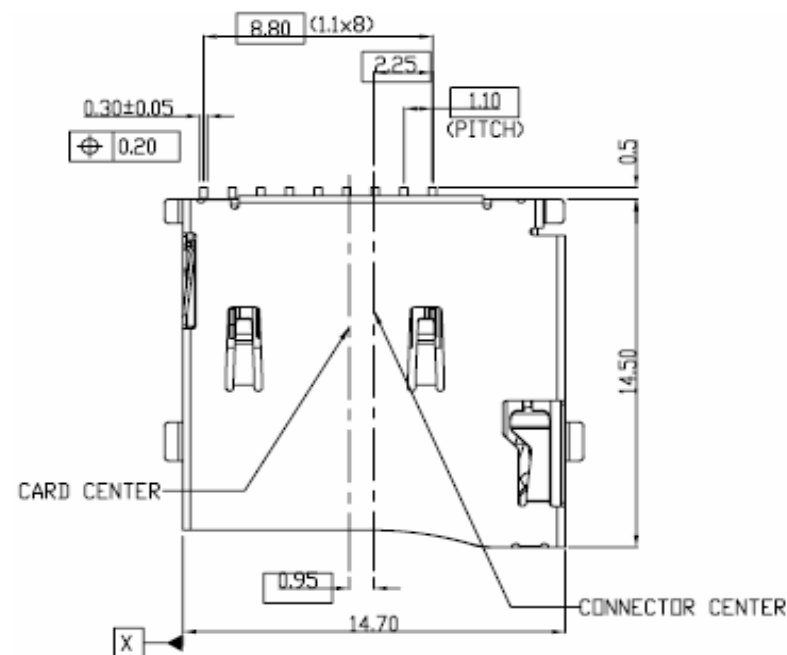
EDCON-COMPONENTS



Technical Discription

| | |
|---------------------------|--|
| Plastic Body: | LCP +35% GF |
| Color: | Black |
| Slider: | LCP +35% GF |
| Color: | Black |
| Contact | Phosphor Bronze Alloy |
| Contact Plating: | Contact area Gold 10micro inches (Min) |
| Solder Area: | Gold Flash |
| All under plated Ductile: | Nickel 50 micro inches min. |
| Shell | SUS 304R-3/4H |
| Contact area: | Gold Flash |
| Spring: | Piano Wire |
| Drag Link: | SUS 304 |

Drawing



| Pin No. | Name | Type | Discription |
|---------|-------------------|--------|------------------------------|
| 1 | DAT2 | I/O/PP | Data Line (bit2) |
| 2 | CD/DAT3 | I/O/PP | Card Detect Data Line (bit3) |
| 3 | CMD | PP | Command Responce |
| 4 | VDD | S | Supply Voltage |
| 5 | CLK | I | Clock |
| 6 | VSS | S | Supply Voltage Ground |
| 7 | DAT0 | I/O/PP | Data Line (bit0) |
| 8 | DAT1 ² | I/O/PP | Data Line (bit1) |
| Cd | | | Card Detection |
| G | | | Ground |

**MICRO SD-CARD Connector
Push Push Type**

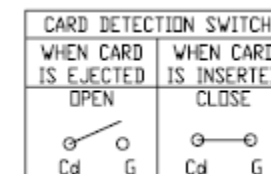
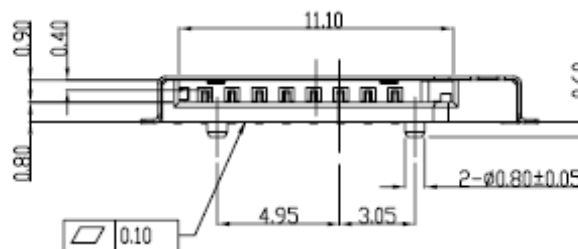
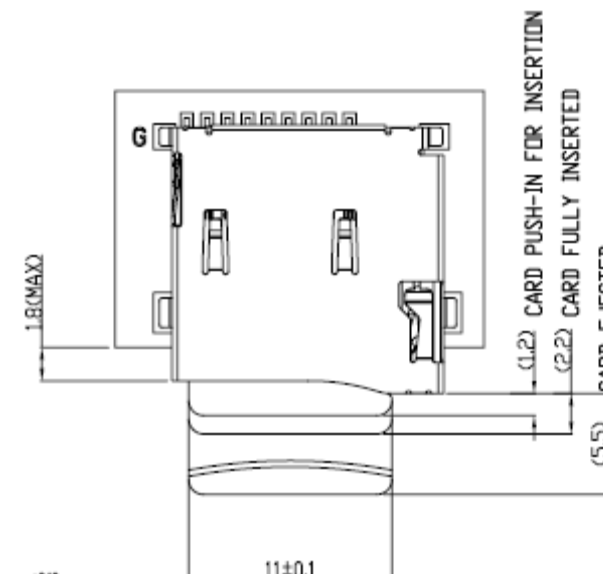
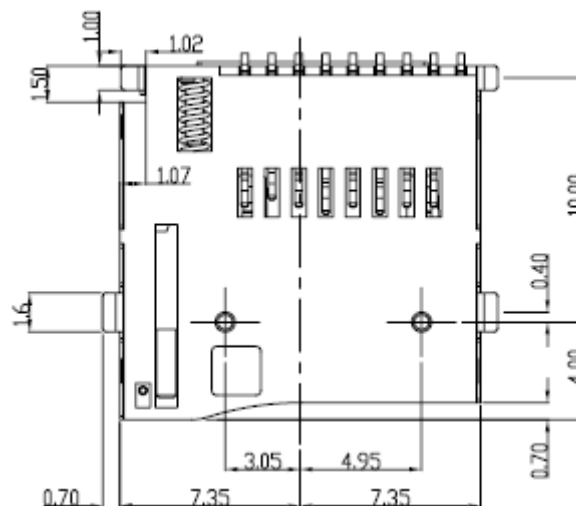
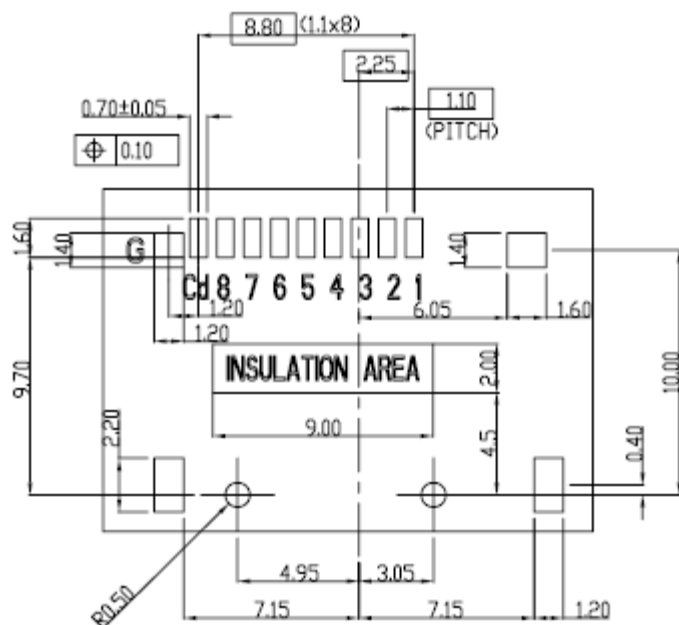
Part No.: **T58004**

| | | | | | | | | | |
|-------|--------|------|--------|--------|--------|-----------|-----------|----------|------------|
| DRW: | Jason | CHKD | Wilson | MATL: | Wilson | TOLERANCE | Mason | DATE | 10.04.2009 |
| APPD: | Schumi | | | FINISH | Jamy | | Sheet No. | 1 from 4 | Customer: |

EDCON-COMPONENTS



PCB Layout



MICRO SD-CARD Connector Push Push Type

Part No.: **T58004**

Customer:

| | | | | | | | | | |
|-------|--------|------|--------|--------|--------|-----------|-----------|----------|------------|
| DRW: | Jason | CHKD | Wilson | MATL: | Wilson | TOLERANCE | Mason | DATE | 10.04.2009 |
| APPD: | Schumi | | | FINISH | Jamy | | Sheet No. | 2 from 4 | |

www.edcon-components.com

email: info@edcon-components.com

EDCON-COMPONENTS



Ordering Informations

| | | | | | | | | | | |
|---------------|-----------------|----------|-----------|--|--|--|--|--|--|--|
| Serie | Contact Plating | ROHS | Packing | | | | | | | |
| T58004 | A | R | TY | | | | | | | |

| | | |
|-------------------------------|-----------------------------|--|
| A = 10µ Gold Plating | R = ROHS Conform | TY = Tray Packing |
| D = Gold Flash Plating | N = Non ROHS Conform | TR102 = Tape Reel Packing 1000PCS |

| | |
|---|---------------|
| MICRO SD-CARD Connector Push Push Type | |
| Part No.: | T58004 |
| Customer: | |

| | | | | | | | | | |
|-------|--------|------|--------|--------|--------|-----------|-------|-----------|------------|
| DRW: | Jason | CHKD | Wilson | MATL: | Wilson | TOLERANCE | Mason | DATE | 10.04.2009 |
| APPD: | Schumi | | | FINISH | Jamy | | | Sheet No. | 3 from 4 |



Soldering Profile Curve

Classification Reflow Profile (JEDEC J-STD-020C)



**MICRO SD-CARD Connector
Push Push Type**

Part No.: **T58004**

| | | | | | | | | | |
|-------|--------|------|--------|--------|--------|-----------|-----------|----------|------------|
| DRW: | Jason | CHKD | Wilson | MATL: | Wilson | TOLERANCE | Mason | DATE | 10.04.2009 |
| APPD: | Schumi | | | FINISH | Jamy | | Sheet No. | 4 from 4 | Customer: |