

# EDCON-COMPONENTS



## Technical Discription

Housing: Hi-Temp Platic (UL 94V-0)  
Black

Terminal: Copper Alloy  
Gold Plated Overall  
(T=0,15)

Fork: Stainless Steel (t=0,2mm)  
Tin Plated Overall

Shell: Stainless Steel (t=0,2mm)

Current Rating: 0,5A (max.)

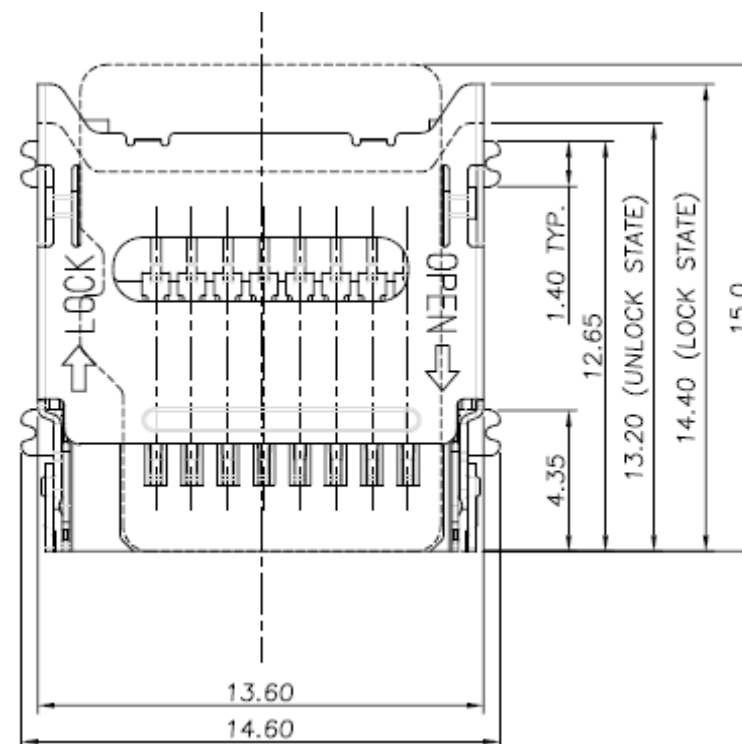
Dielectric Withstanding Voltage: 500VAC R.M.S. f.one Min.

Insulation Resistance: 1000MΩ Min AT 500VDC.

Contact Resistance: 30mΩ Max.

Operating Temperature: -25°C ~ + 85°C.

## Drawing



Pin No.	Name	Type	Discription
1	DAT2	I/O/PP	Data Line (bit2)
2	CD/DAT3	I/O/PP	Card Detect Data Line (bit3)
3	CMD	PP	Command Responce
4	VDD	S	Supply Voltage
5	CLK	I	Clock
6	VSS	S	Supply Voltage Ground
7	DAT0	I/O/PP	Data Line (bit0)
8	DAT1 <sup>2</sup>	I/O/PP	Data Line (bit1)

### MICRO SD-CARD Connector

Part No.: **T58002**

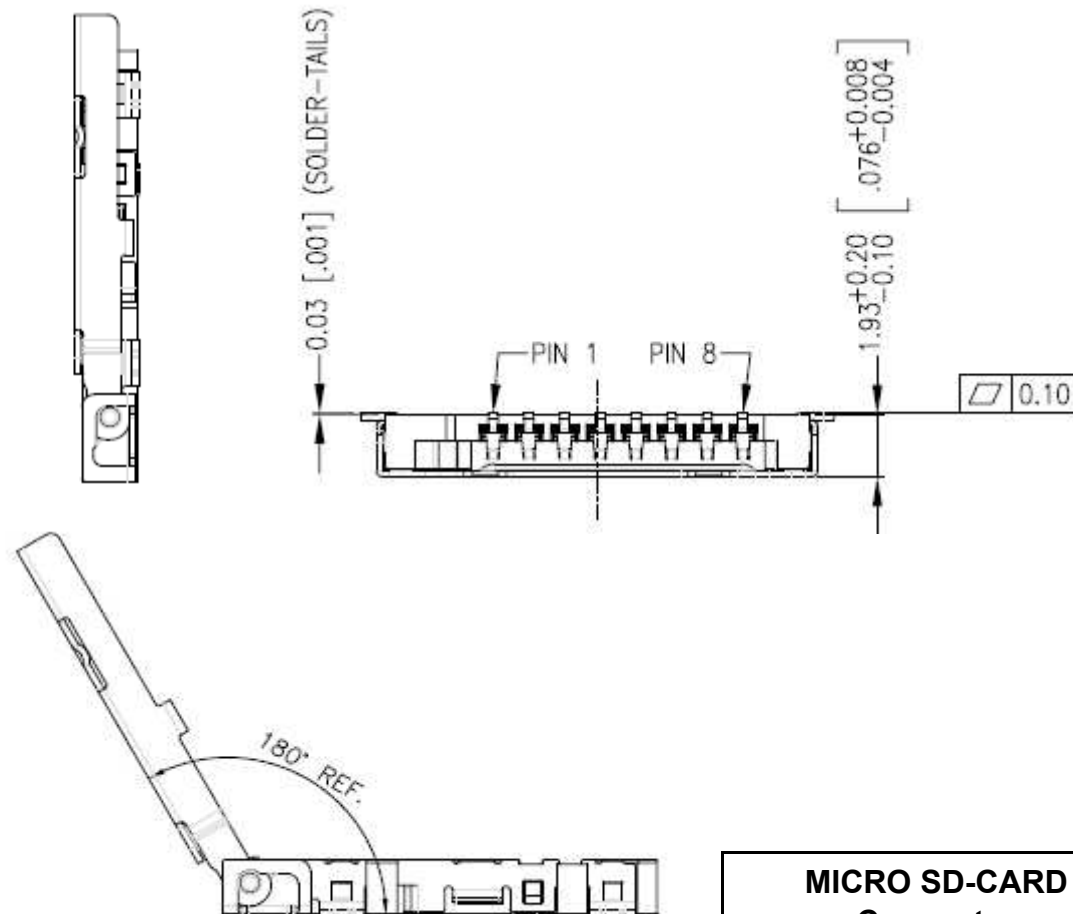
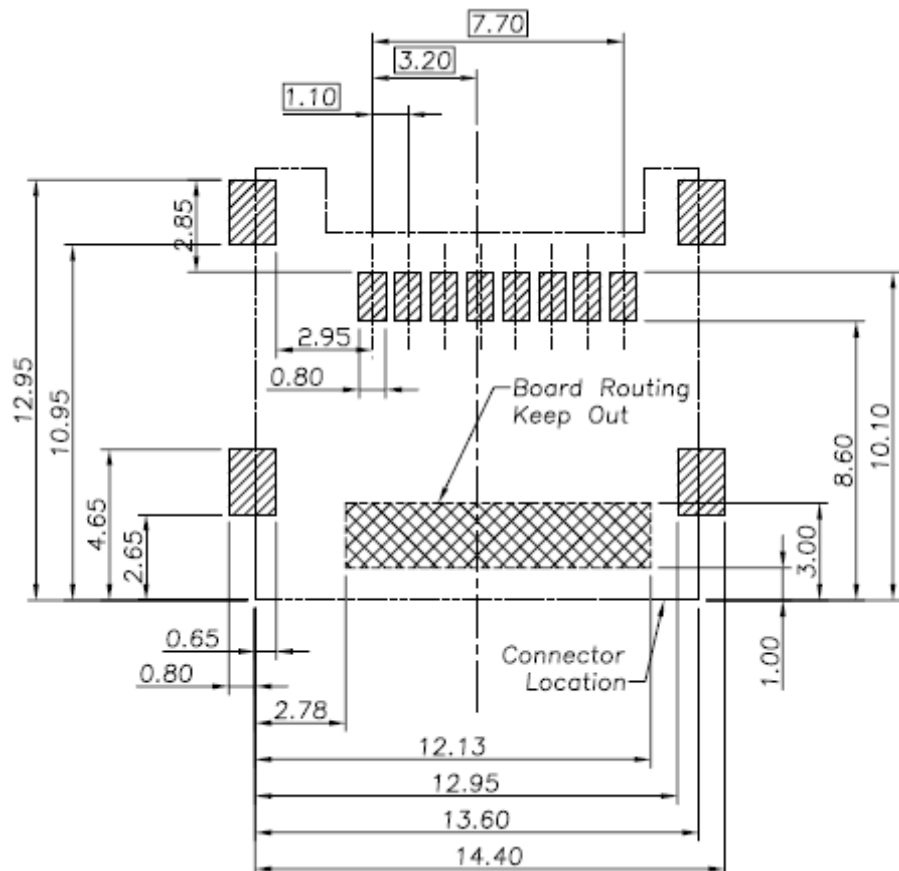
Customer:

DRW:	Jason	CHKD	Wilson	MATL:	Wilson	TOLERANCE	Mason	DATE	10.04.2009
APPD:	Schumi			FINISH	Jamy		Sheet No.	1 from 4	

# EDCON-COMPONENTS



## PCB Layout



OPEN STATE

<b>MICRO SD-CARD Connector</b>	
Part No.:	<b>T58002</b>
Customer:	

DRW:	Jason	CHKD	Wilson	MATL:	Wilson	TOLERANCE	Mason	DATE	10.04.2009
APPD:	Schumi			FINISH	Jamy		Sheet No.	2 from 4	

[www.edcon-components.com](http://www.edcon-components.com)

email: [info@edcon-components.com](mailto:info@edcon-components.com)

# EDCON-COMPONENTS



## Ordering Informations

Serie	Contact Plating	ROHS	Packing							
<b>T58002</b>	<b>A</b>	<b>R</b>	<b>TY</b>							

<b>A</b> = 10µ Gold Plating	<b>R</b> = ROHS Conform	<b>TY</b> = Tray Packing
<b>D</b> = Gold Flash Plating	<b>N</b> = Non ROHS Conform	

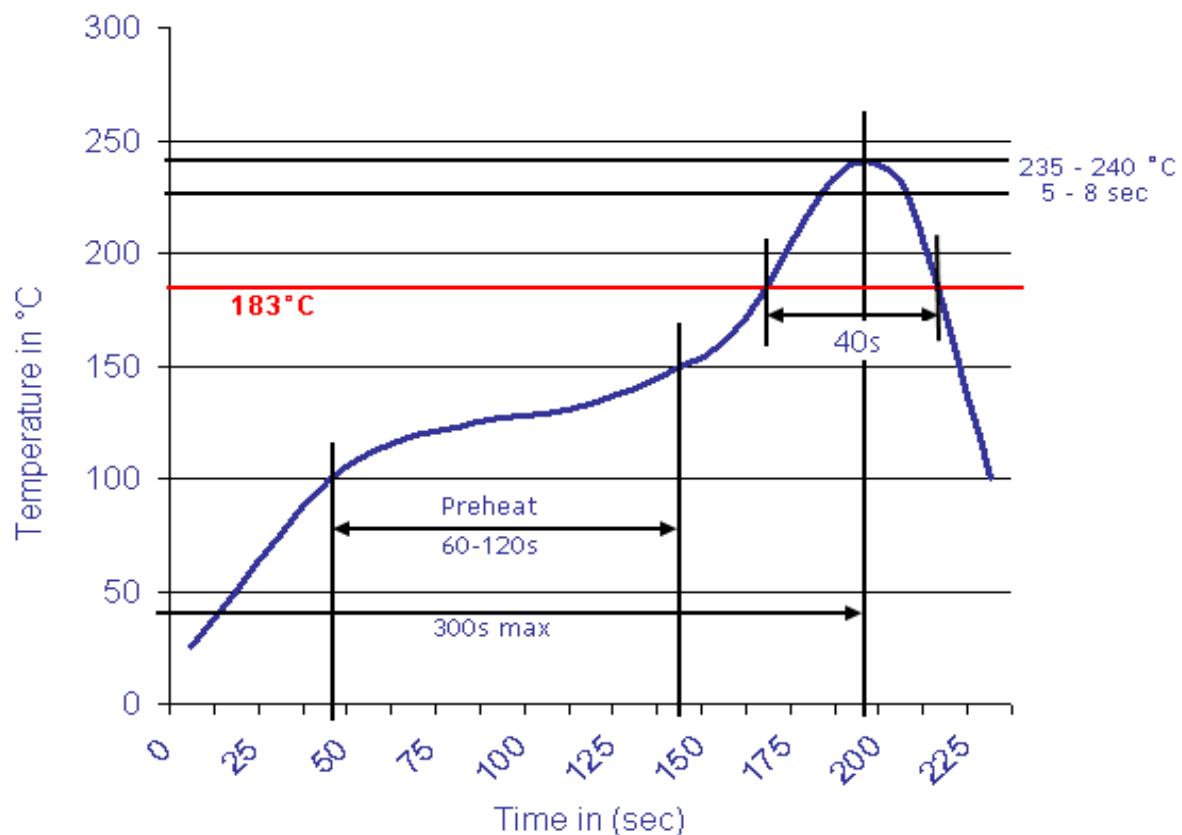
<b>MICRO SD-CARD Connector</b>	
Part No.:	<b>T58002</b>
Customer:	

DRW:	Jason	CHKD	Wilson	MATL:	Wilson	TOLERANCE	Mason	DATE	10.04.2009
APPD:	Schumi			FINISH	Jamy			Sheet No.	3 from 4



Soldering Profile Curve

Classification Reflow Profile (JEDEC J-STD-020C)



<b>MICRO SD-CARD Connector</b>	
Part No.:	<b>T58002</b>
Customer:	

DRW:	Jason	CHKD	Wilson	MATL:	Wilson	TOLERANCE	Mason	DATE	10.04.2009
APPD:	Schumi			FINISH	Jamy		Sheet No.	4 from 4	