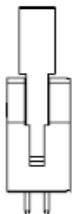


EDCON-COMPONENTS

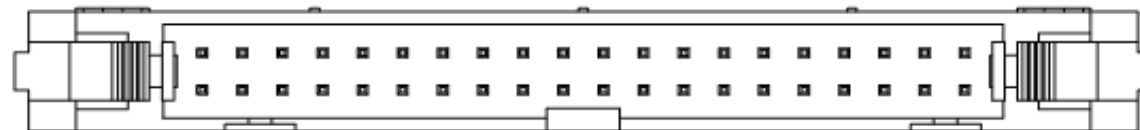
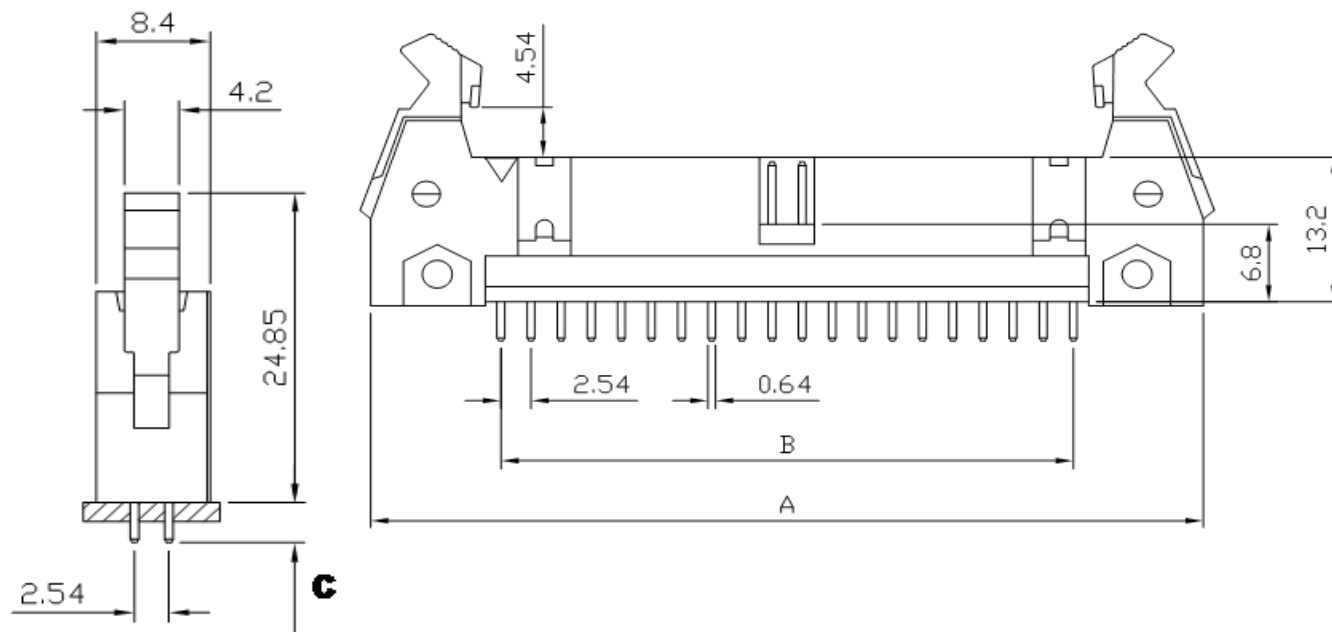
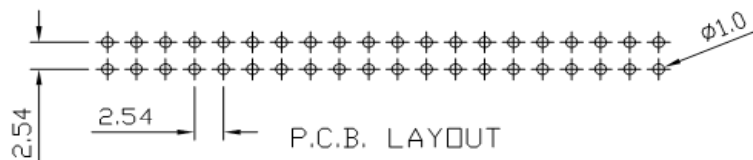


Specifications

Current Rating: 3,0A
 Insulation Resistance: 500M Ohm min.
 Contact Resistance: 20milli Ohm max.
 Dielectric Voltage: 500V AC for one minute
 Operating Temperature: -40°C ~ to +105°C
 Insulator Material: PBT / Polyester (UL94V-0)

Contact Pin: Brass
 Contact Plating: Gold all over or Selectiv Ni.
 Latches: Plastic

Drawing



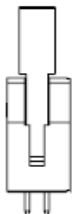
**Box Header w. Latch Pitch
2,54x2,54mm**

Part No.: **T14A010**

Customer:

DRW:	Jason	CHKD	Wilson	MATL:	Wilson	TOLERANCE	Mason	DATE	09.01.2020
APPD:	Schumi			FINISH	Jamy		Sheet No.	1 from 4	

EDCON-COMPONENTS



Ordering Informations

Serie	No. of Pos.	Contact Plating	Material	Color of Body	Pin Length Configuration	Latches Type	ROHS	Packing		
T14A010	XX	G0	PB	BK	A00	S	R	BU		

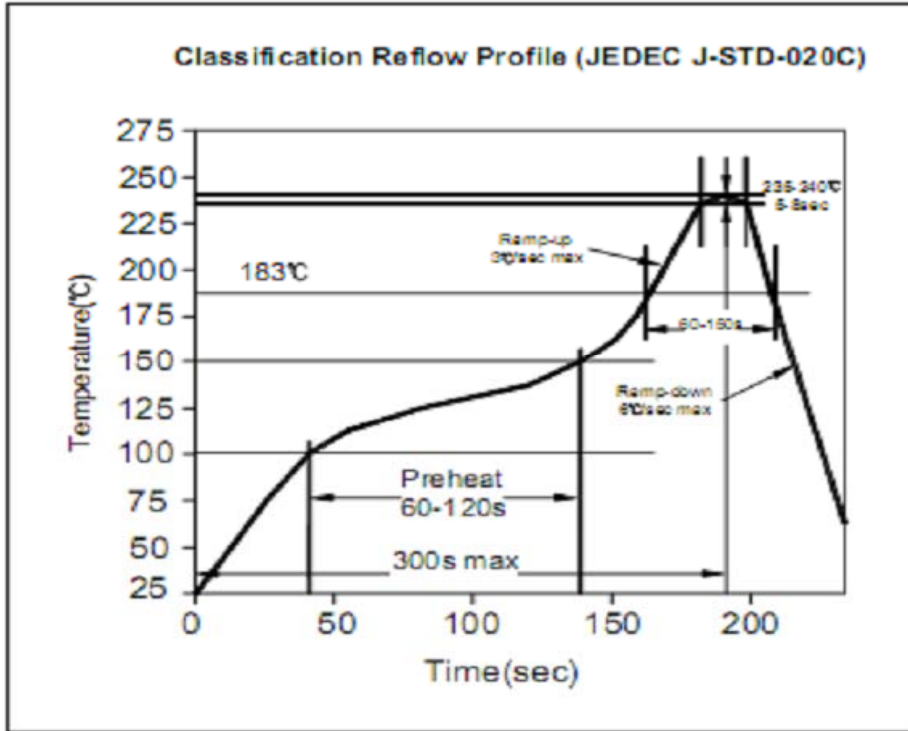
XX= 10, 14, 16, 20, 24, 26, 30, 34, 40, 44, 50, 60, 64	G0= Gold Flash	PB= PBT	BK= Black	Axx = Look Table	S= Special Short Latches	N= NO ROHS conform	BU= Bulk Ware
	T0= Tin plated						
	GA= 3µ Gold Plating						
	GB= 5µ Gold Plating						
	GC= 10µ Gold Plating						
	GD= 30µ Gold Plating						
	S0= Selectiv Plating Gold Flash / Tin						
	SD= Selectiv Tin/ 5µGold						
SD= Selectiv Tin/ 10µ Gold Flash							
SD= Selectiv Tin/ 20µ Gold	SD= Selectiv Tin/ 30µ Gold						

Box Header w. Latch Pitch 2,54x2,54mm	
Part No.:	T14A010
Customer:	

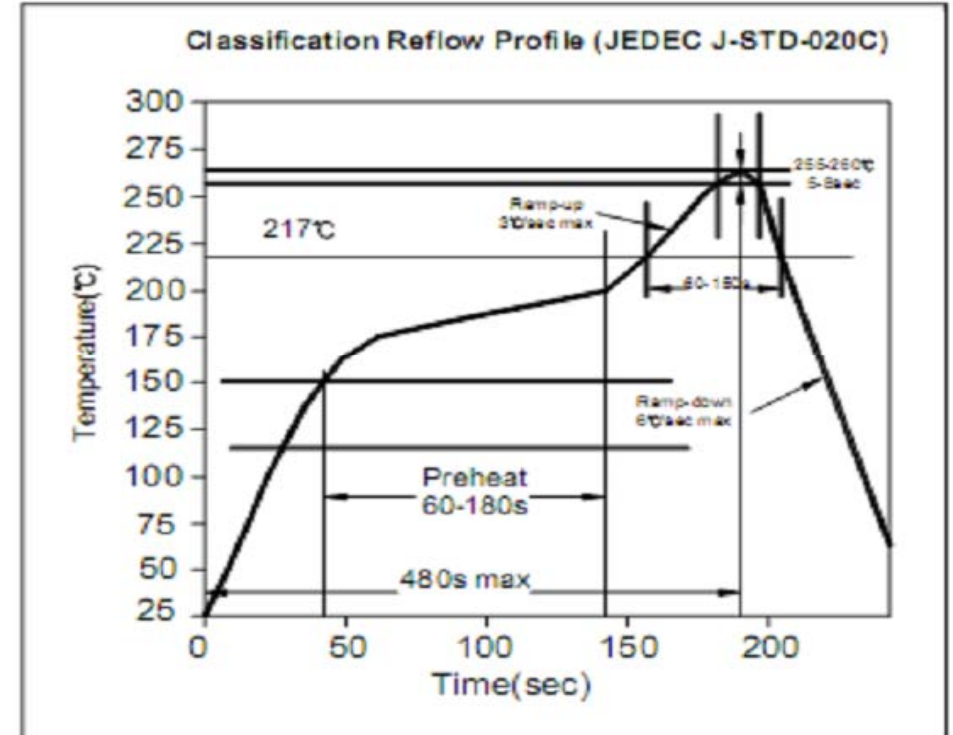
DRW:	Jason	CHKD	Wilson	MATL:	Wilson	TOLERANCE	Mason	DATE	09.01.2020
APPD:	Schumi			FINISH	Jamy		Sheet No.		3 from 4



Soldering Profile for Lead Soldering (P.B.T.)



Soldering Profile for Lead Free Soldering (Nylon 6T)



**Box Header w. Latch Pitch
2,54x2,54mm**

Part No.: **T14A010**

Customer:

DRW:	Jason	CHKD	Wilson	MATL:	Wilson	TOLERANCE	Mason	DATE	09.01.2020
APPD:	Schumi			FINISH	Jamy		Sheet No.	4 from 4	