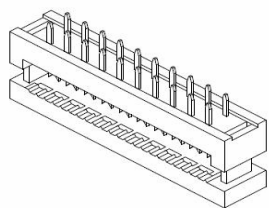


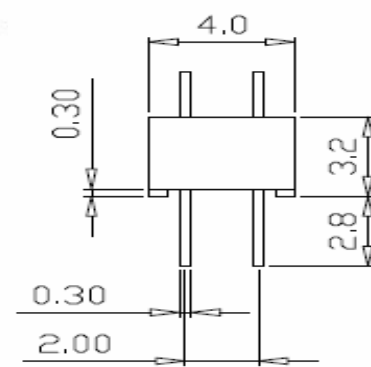
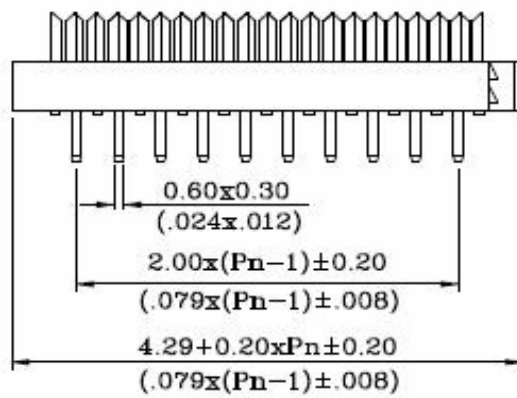
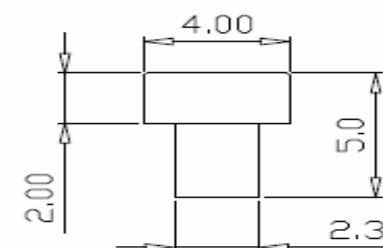
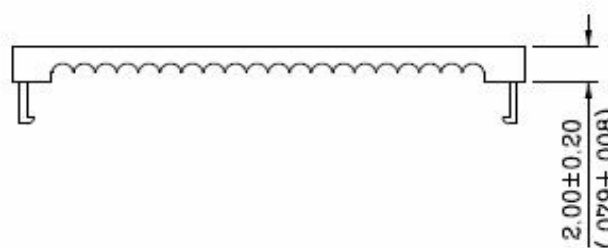
EDCON-COMPONENTS



Specifications

Contact Material:	Brass or Phosphor Bronze
Insulation:	PBT / UL94V-0
Current Rating:	Current DC=1A
Duration time:	30Min.
Withstanding Voltage:	500VAC
	Duration time: 1 Min.
Contact Resistance:	
	Current; 1A
	Requirements: 30mΩ max.
Insulation Resistance:	500VDC
	Duration: 1 Min.
	Requirements: 5000MΩ min.
Temperature Range:	-50°C ~ +105°C

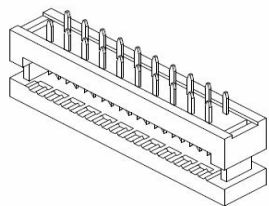
Drawing (dimensions all into mm)



IDC Socket 2Row P=2,00mm	
Part No.:	T88B001
Customer:	

DRW:	Jason	CHKD	Wilson	MATL:	Wilson	TOLERANCE	Mason	DATE	07.07.2014
APPD:	Schumi			FINISH	Jamy		Sheet No.	1 from 3	

EDCON-COMPONENTS

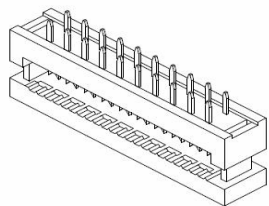


Ordering Informations

Serie	No .of Position	Contact Material	Contact Plating	Color of Body	ROHS	Packing				
T88B001	10	PB	S0	BK	R	TY				
10 ~ 50 Pos.	PB= Phosphor Bronze	S0= Selectiv GF	BK= Black (PBT)	R= ROHS conform	TY= Tray Packing					
		S1= Selectiv 15µ Gold								
		S2= Selectiv 30µ Gold								
		TN= Full Tin plated								
	BR= Brass									

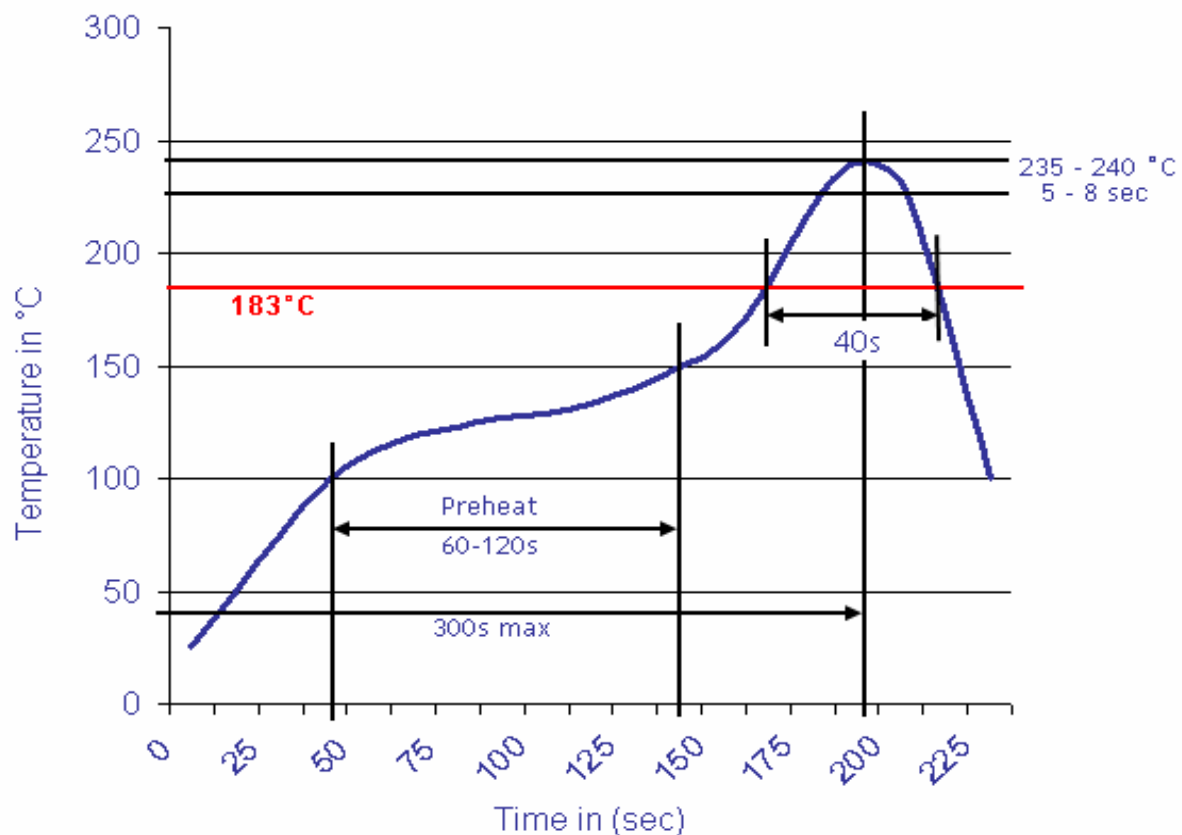
IDC Socket 2Row P=2,00mm	
Part No.:	T88B001
Customer:	

DRW:	Jason	CHKD	Wilson	MATL:	Wilson	TOLERANCE	Mason	DATE	07.07.2014
APPD:	Schumi			FINISH	Jamy		Sheet No.	2 from 3	



Soldering Profile Curve

Classification Reflow Profile (JEDEC J-STD-020C)



IDC Socket 2Row	
P=2,00mm	
Part No.:	T88B001
Customer:	

DRW:	Jason	CHKD	Wilson	MATL:	Wilson	TOLERANCE	Mason	DATE	07.07.2014
APPD:	Schumi			FINISH	Jamy		Sheet No.	3 from 3	