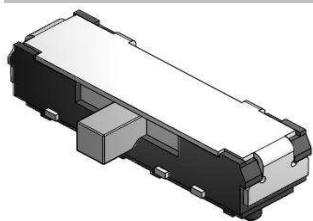


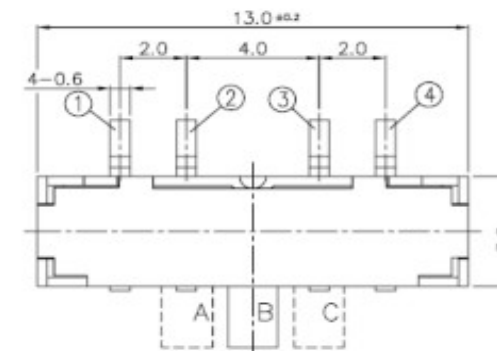
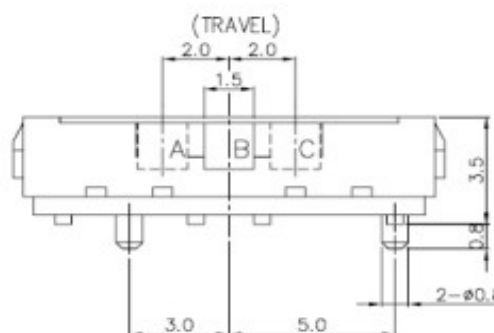
# EDCON-COMPONENTS



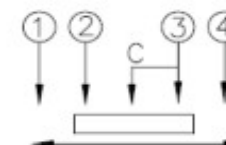
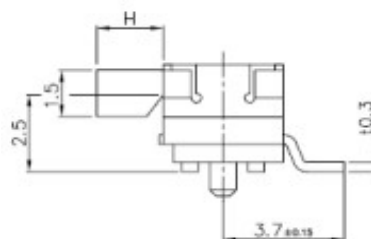
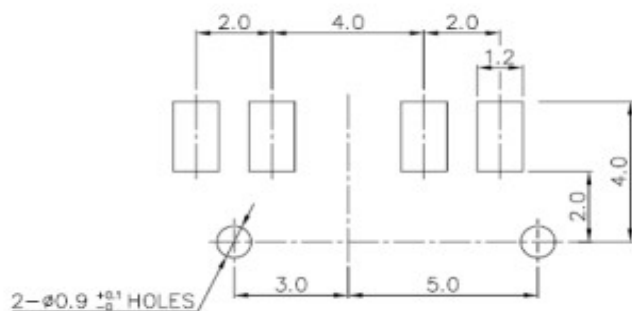
## Technical Description

**Rating:** DC4V, 0,3A  
**Circuit:** 1C-3P  
**Timing:** NON-Shorting  
**Travel:**  $2,0 \pm 0,1\text{mm}$   
**Contact Resistance:** 70 mΩ max.  
**Operating Force:**  
 Stay  $a > b < c$  250gf  $\pm 100\text{gf}$ .  
 Stay  $a < b > c$  300gf  $\pm 150\text{gf}$ .  
  
**Operating Life:** 10000 cycles

## Drawing



## PCB Layout

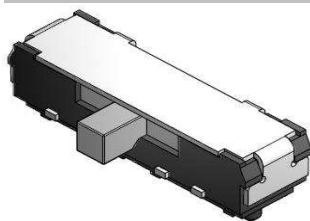


## SMD-SLIDE-Switch 3,5mm Height

Part No.: **Q62044**

DRW:	Jason	CHKD	Wilson	MATL:	Wilson	TOLERANCE	Mason	DATE	31.08.2016
APPD:	Schumi			FINISH	Jamy		Sheet No.	1 from 3	Customer:

# EDCON-COMPONENTS



## Ordering Informations

Serie	Knob Length (H)	Knob Type	Polarisation Peg	Spezial Function	ROHS	Packing				
-------	-----------------	-----------	------------------	------------------	------	---------	--	--	--	--

<b>Q62044</b>	<b>A</b>	<b>0</b>	<b>Y</b>	<b>0</b>	<b>R</b>	<b>TR</b>				
---------------	----------	----------	----------	----------	----------	-----------	--	--	--	--

<b>A= 2,0mm</b>	<b>0= No function</b>	<b>Y= with Peg</b>	<b>0= No function</b>	<b>R= ROHS Conform</b>	<b>BU= Bulk-Ware</b>
<b>B= 4,7mm</b>					<b>TR= Tape Reel</b>

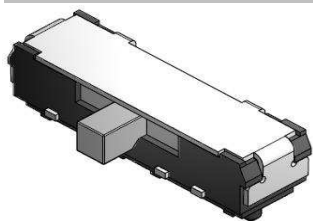
**SMD-SLIDE-Switch  
3,5mm Height**

Part No.: **Q62044**

DRW:	Jason	CHKD	Wilson	MATL:	Wilson	TOLERANCE	Mason	DATE	31.08.2016
APPD:	Schumi			FINISH	Jamy		Sheet No.	2 from 3	Customer:

[www.edcon-components.com](http://www.edcon-components.com)

email: [info@edcon-components.com](mailto:info@edcon-components.com)



Soldering Profile Curve

Classification Reflow Profile (JEDEC J-STD-020C)



**SMD-SLIDE-Switch**  
**3,5mm Height**

Part No.: **Q62044**

DRW:	Jason	CHKD	Wilson	MATL:	Wilson	TOLERANCE	Mason	DATE	31.08.2016
APPD:	Schumi			FINISH	Jamy		Sheet No.	3 from 3	Customer: