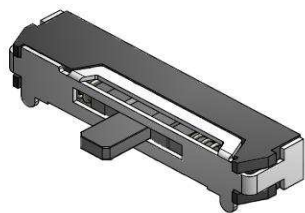


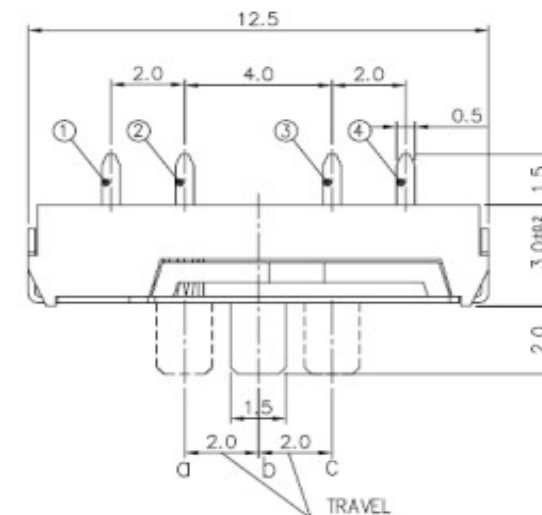
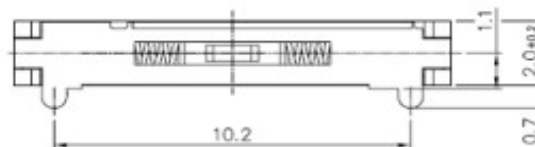
EDCON-COMPONENTS



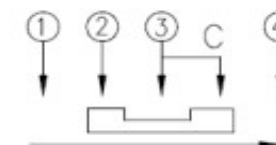
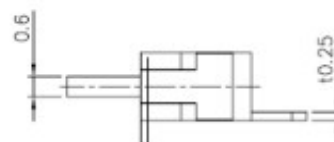
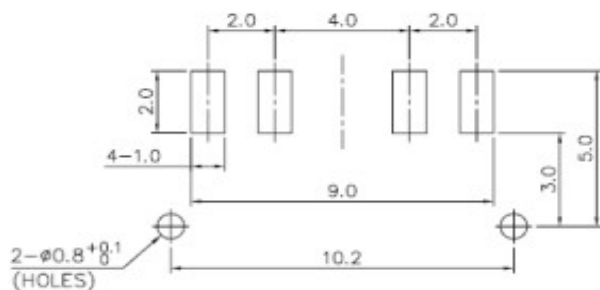
Technical Description

Rating: DC4V, 0,3A
 Circuit: 1C-3P
 Timing: NON-Shorting
 Travel: $2,0 \pm 0,1\text{mm}$
 Contact Resistance: $70\text{ m}\Omega\text{ max.}$
 Operating Force:
 Spring return $b > a\ 200\text{gf} \pm 100\text{gf.}$
 Spring return $b > c\ 200\text{gf} \pm 100\text{gf.}$
 Operating Life: 10000 cycles

Drawing



PCB Layout



SMD-SLIDE-Switch 2,0mm Height

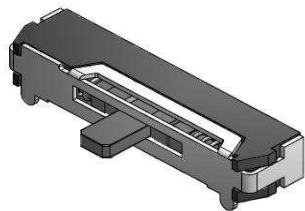
Part No.: **Q62043**

DRW:	Jason	CHKD	Wilson	MATL:	Wilson	TOLERANCE	Mason	DATE	31.08.2016
APPD:	Schumi			FINISH	Jamy		Sheet No.	1 from 3	Customer:

www.edcon-components.com

email: info@edcon-components.com

EDCON-COMPONENTS



Ordering Informations

Serie	Knob Length	Knob Type	Polarisation Peg	Spezial Function	ROHS	Packing				
-------	-------------	-----------	------------------	------------------	------	---------	--	--	--	--

Q62043	A	0	Y	0	R	TR				
---------------	----------	----------	----------	----------	----------	-----------	--	--	--	--

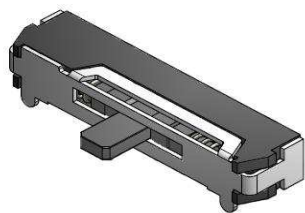
A= 2,0mm	0= No function	Y= with Peg	0= No function	R= ROHS Conform	BU= Bulk-Ware
					TR= Tape Reel

**SMD-SLIDE-Switch
2,0mm Height**

Part No.: **Q62043**

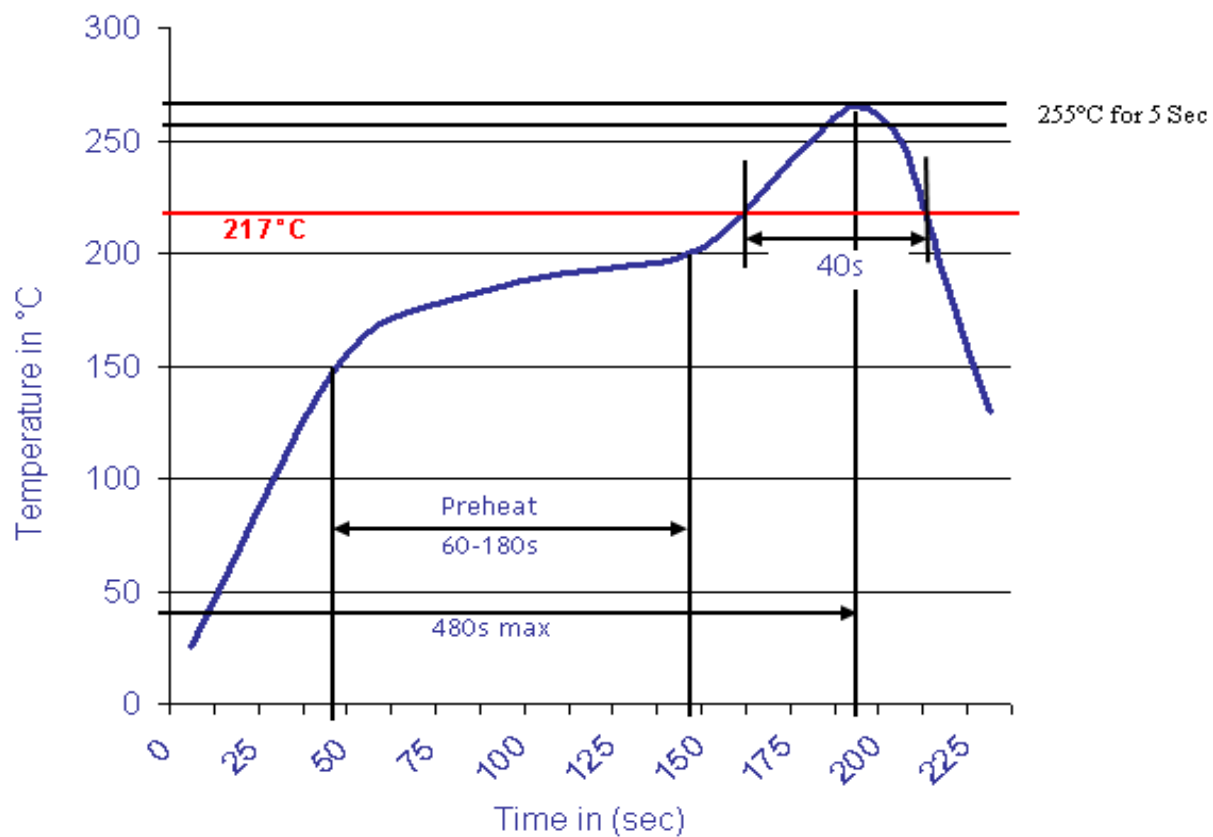
DRW:	Jason	CHKD	Wilson	MATL:	Wilson	TOLERANCE	Mason	DATE	31.08.2016
APPD:	Schumi			FINISH	Jamy		Sheet No.		2 from 3

Customer:



Soldering Profile Curve

Classification Reflow Profile (JEDEC J-STD-020C)



**SMD-SLIDE-Switch
2,0mm Height**

Part No.: **Q62043**

DRW:	Jason	CHKD	Wilson	MATL:	Wilson	TOLERANCE	Mason	DATE	31.08.2016
APPD:	Schumi			FINISH	Jamy		Sheet No.	3 from 3	Customer: