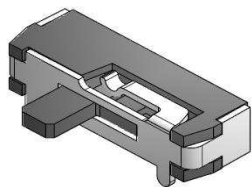


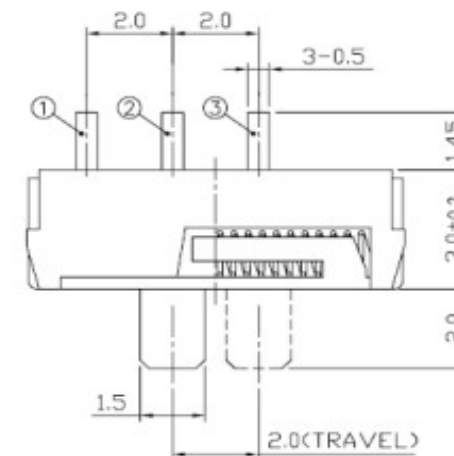
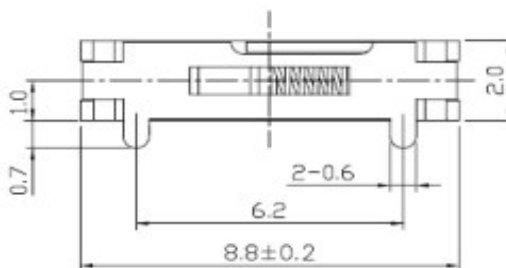
# EDCON-COMPONENTS



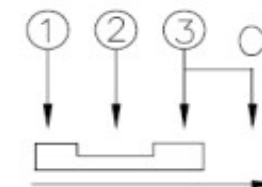
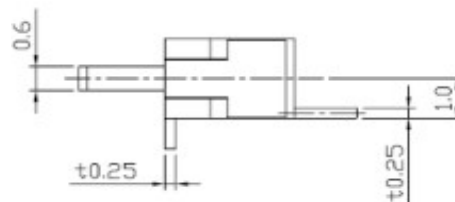
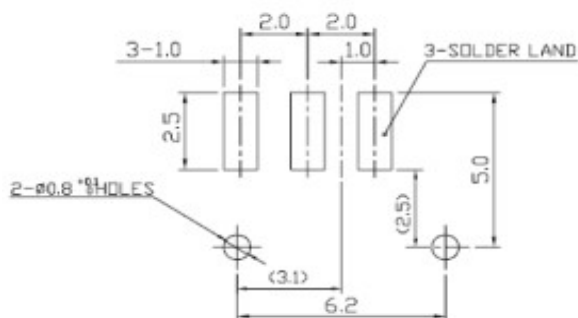
## Technical Description

Rating: DC4V, 0,3A  
 Circuit: 1C-2P  
 Timing: NON-Shorting  
 Travel:  $2,0 \pm 0,1\text{mm}$   
 Contact Resistance:  $70\text{ m}\Omega\text{ max.}$   
 Operating Force:  $150 \pm 150\text{gf}$   
 Operating Life: 10000 cycles

## Drawing



## PCB Layout



### SMD-SLIDE-Switch 2,0mm Height

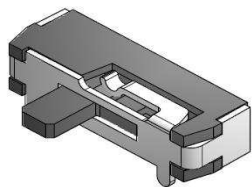
Part No.: **Q62040**

DRW:	Jason	CHKD	Wilson	MATL:	Wilson	TOLERANCE	Mason	DATE	30.08.2016
APPD:	Schumi			FINISH	Jamy		Sheet No.	1 from 3	Customer:

[www.edcon-components.com](http://www.edcon-components.com)

email: [info@edcon-components.com](mailto:info@edcon-components.com)

# EDCON-COMPONENTS



## Ordering Informations

Serie	Knob Length (H)	Knob Type	Polarisation Peg	Spezial Function	ROHS	Packing				
-------	-----------------	-----------	------------------	------------------	------	---------	--	--	--	--

<b>Q62040</b>	-	<b>B</b>	<b>0</b>	<b>Y</b>	<b>B</b>	<b>R</b>	<b>TR</b>			
---------------	---	----------	----------	----------	----------	----------	-----------	--	--	--

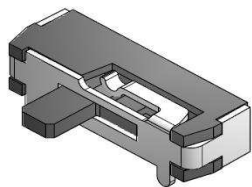
	<b>0=</b> No function	<b>Y=</b> with Peg		<b>R=</b> ROHS Conform	<b>BU=</b> Bulk-Ware
<b>B=</b> 2,0mm			<b>B=</b> Spring return		<b>TR=</b> Tape Reel

**SMD-SLIDE-Switch  
2,0mm Height**

Part No.: **Q62040**

DRW:	Jason	CHKD	Wilson	MATL:	Wilson	TOLERANCE	Mason	DATE	30.08.2016
APPD:	Schumi			FINISH	Jamy		Sheet No.		2 from 3

Customer:



Soldering Profile Curve

Classification Reflow Profile (JEDEC J-STD-020C)



<b>SMD-SLIDE-Switch</b>	
<b>2,0mm Height</b>	
Part No.:	<b>Q62040</b>
Customer:	

DRW:	Jason	CHKD	Wilson	MATL:	Wilson	TOLERANCE	Mason	DATE	30.08.2016
APPD:	Schumi			FINISH	Jamy		Sheet No.	3 from 3	