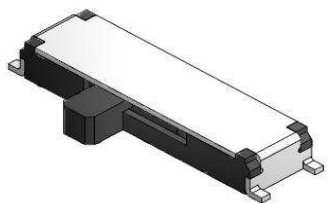


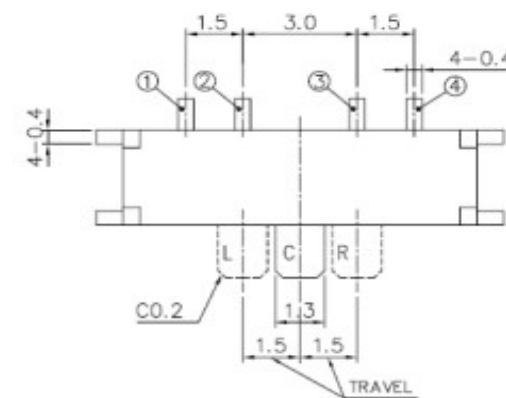
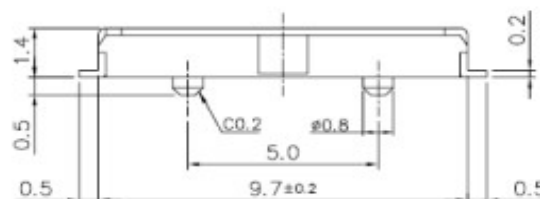
EDCON-COMPONENTS



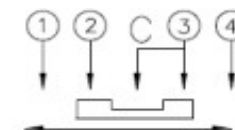
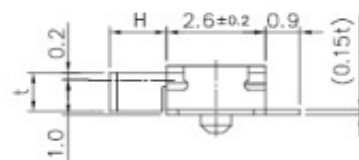
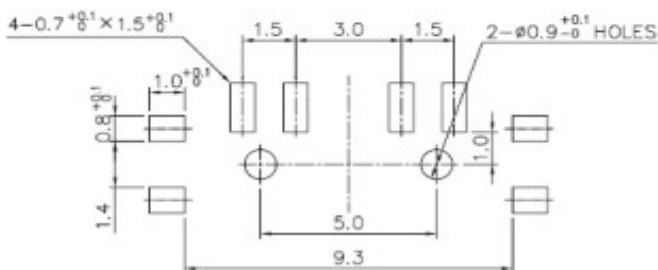
Technical Description

Rating: DC4V, 0,3A
Circuit: 1C-3P
Timing: NON-Shorting
Travel: $1,5 \pm 0,1\text{mm}$
Contact Resistance: 70 mΩ max.
Operating Force: L>C<-R $200 \pm 150\text{gf}$
 L<C>R $150 \pm 150\text{gf}$
Operating Life: 10000 cycles

Drawing



PCB Layout



**SMD-SLIDE-Switch
1,4mm Height**

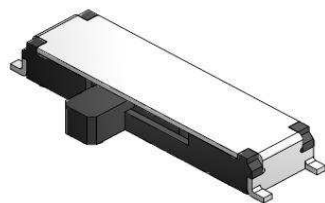
Part No.: **Q62029**

DRW:	Jason	CHKD	Wilson	MATL:	Wilson	TOLERANCE	Mason	DATE	30.08.2016
APPD:	Schumi			FINISH	Jamy		Sheet No.	1 from 3	Customer:

www.edcon-components.com

email: info@edcon-components.com

EDCON-COMPONENTS



Ordering Informations

Serie	Knob Length (H + t)	Knob Type	Polarisation Peg	Spezial Function	ROHS	Packing				
-------	------------------------	-----------	---------------------	---------------------	------	---------	--	--	--	--

Q62029	-	A	0	Y	0	R	TR			
---------------	---	----------	----------	----------	----------	----------	-----------	--	--	--

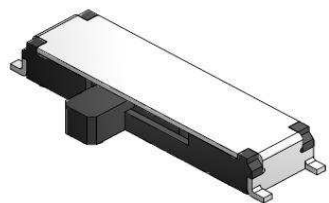
A= 1,5mm + t=1,1mm	0= No function	Y= with Peg	0= No function	R= ROHS Conform	BU= Bulk- Ware
C= 1,5mm + t=0,4mm					TR= Tape Reel

**SMD-SLIDE-Switch
1,4mm Height**

Part No.: **Q62029**

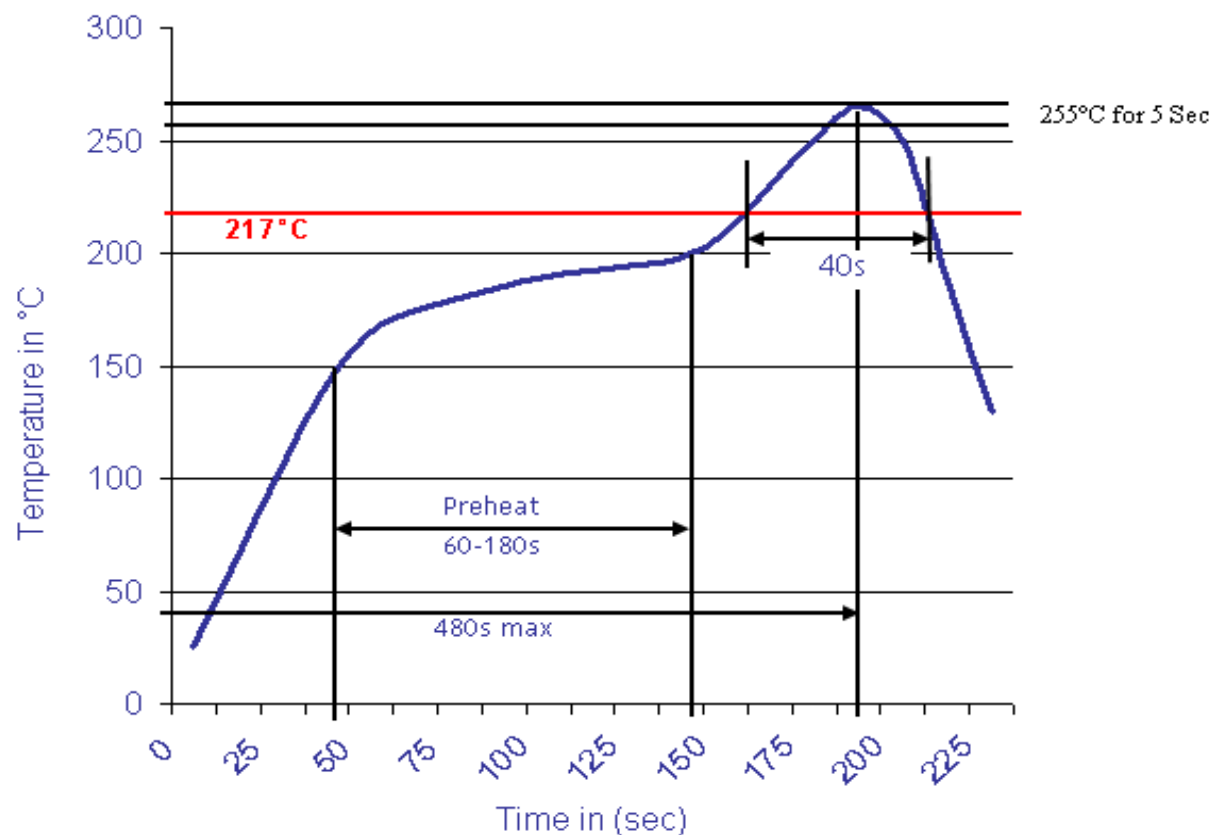
DRW:	Jason	CHKD	Wilson	MATL:	Wilson	TOLERANCE	Mason	DATE	30.08.2016
APPD:	Schumi			FINISH	Jamy		Sheet No.		2 from 3

Customer:



Soldering Profile Curve

Classification Reflow Profile (JEDEC J-STD-020C)



**SMD-SLIDE-Switch
1,4mm Height**

Part No.: **Q6209**

DRW:	Jason	CHKD	Wilson	MATL:	Wilson	TOLERANCE	Mason	DATE	30.08.2016
APPD:	Schumi			FINISH	Jamy		Sheet No.	3 from 3	Customer: