

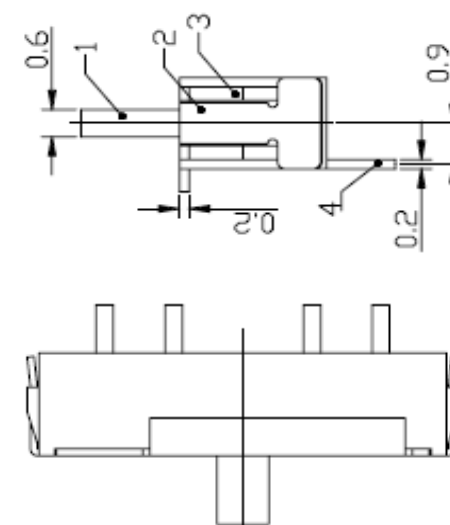
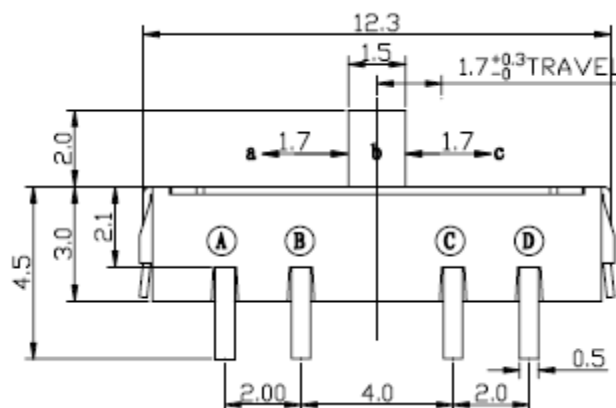
# EDCON-COMPONENTS



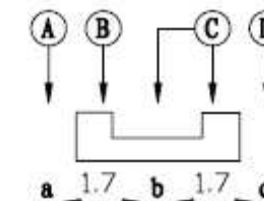
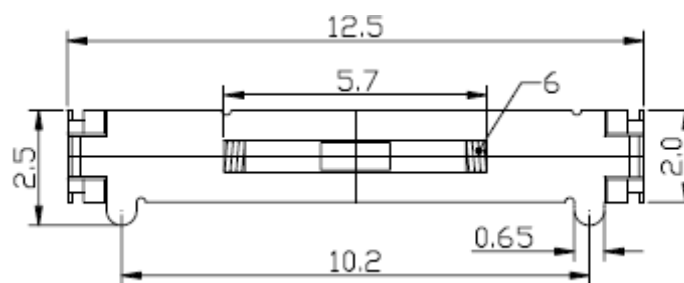
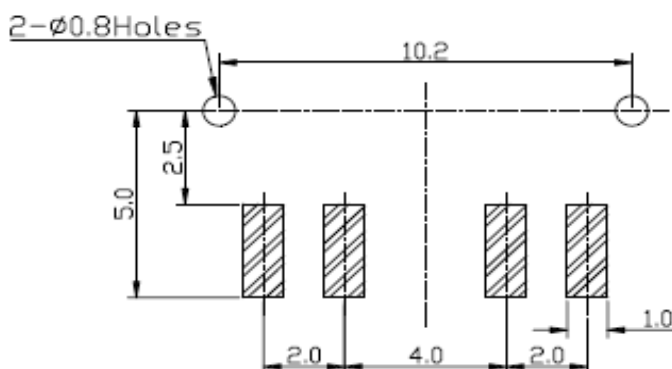
## Technical Description

Rating: DC12V, 0,1A  
 Circuit: 1C - 2P  
 Timing: NON-Shorting  
 Travel:  $1,7 \pm 0,1\text{mm}$   
 Contact Resistance: 100 mΩ max.  
 Operating Force:  
 Spring return  $b > a$  200gf  $\pm$ 100gf.  
 Spring return  $b > c$  200gf  $\pm$ 100gf.  
 Operating Life: 10000 cycles  
 Insulation resistance: 100MΩ min.at 250VDC  
 Dielectric Strnegth: 250VAC f. 1 Min.

## Drawing



## PCB Layout



## SMD-SLIDE-Switch

Part No.: **Q62002**

Customer:

DRW:	Jason	CHKD	Wilson	MATL:	Wilson	TOLERANCE	Mason	DATE	01.09.2016
APPD:	Schumi			FINISH	Jamy		Sheet No.	1 from 3	

# EDCON-COMPONENTS



## Ordering Informations

Serie	Knob Length	Knob Type	Polarisation Peg	Spezial Function	ROHS	Packing				
-------	-------------	-----------	------------------	------------------	------	---------	--	--	--	--

<b>Q62002</b>	<b>A</b>	<b>0</b>	<b>Y</b>	<b>0</b>	<b>R</b>	<b>TR</b>				
---------------	----------	----------	----------	----------	----------	-----------	--	--	--	--

A= 2,0mm	0= No function	Y= with Peg	0= No function	R= ROHS Conform	BU= Bulk-Ware
					TR= Tape Reel

**SMD-SLIDE-Switch**

Part No.: **Q62002**

DRW:	Jason	CHKD	Wilson	MATL:	Wilson	TOLERANCE	Mason	DATE	01.09.2016
APPD:	Schumi			FINISH	Jamy		Sheet No.		2 from 3

Customer:



Soldering Profile Curve

Classification Reflow Profile (JEDEC J-STD-020C)



**SMD-SLIDE-Switch**

Part No.: **Q62002**

DRW:	Jason	CHKD	Wilson	MATL:	Wilson	TOLERANCE	Mason	DATE	01.09.2016
APPD:	Schumi			FINISH	Jamy		Sheet No.	3 from 3	Customer: