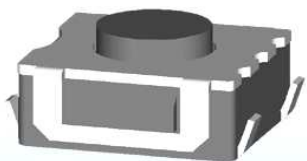


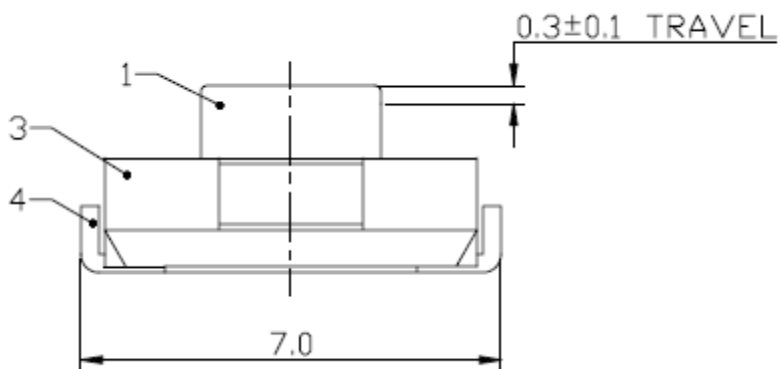
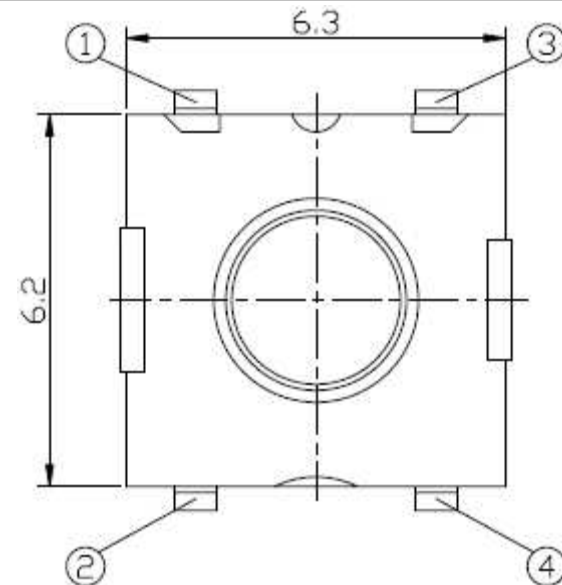
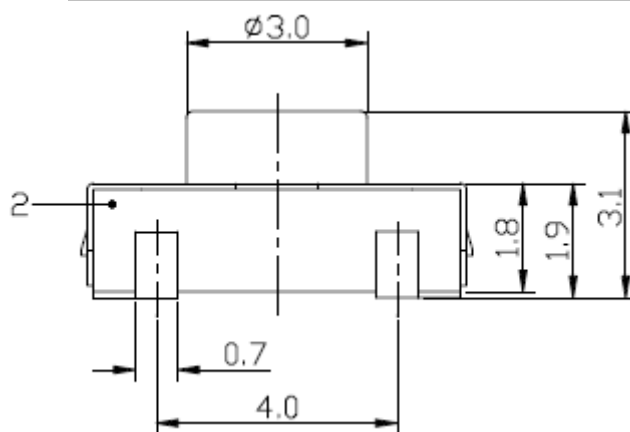
# EDCON-COMPONENTS



## SPECIFICATION:

Voltage Rating:	12VDC
Current Rating:	50mA
Mechanical Life:	100000 cycles
Contact Resistance:	100m Ω max. (initial)
Insulation Resistance:	10M Ω min. 500VDC
Dielectric Strength:	250VAC/1min.
Operating Temperature:	-.40°C ~ +80°C

## Drawing



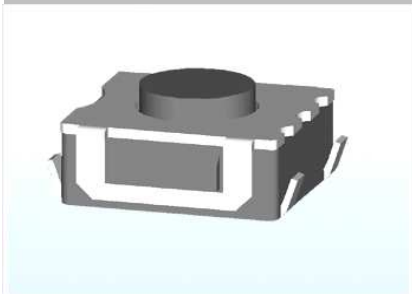
### SMT Tact Switch

Part No.: **Q12000**

Customer:

DRW:	Jason	CHKD	Wilson	MATL:	Wilson	TOLERANCE	Mason	DATE	12.05.2014
APPD:	Schumi			FINISH	Jamy		Sheet No.	1 from 3	

# EDCON-COMPONENTS



## Ordering Informations

Serie	Total height w. Body	Fill with 0	Operating Force	Polarisation Peg	Electrical life	Cap Option	ROHS	Packing		
<b>Q12000</b>	<b>050</b>	<b>X</b>	<b>251</b>	<b>N</b>	<b>105</b>	<b>N</b>	<b>R</b>	<b>TR</b>		

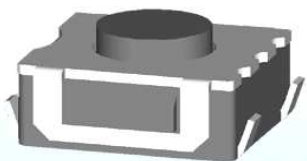
<b>050</b> = 5,0mm	<b>X</b> = no function	<b>251</b> = 250gr	<b>N</b> = without Peg <b>Y</b> = with Peg	<b>105</b> = 1000000 Cycles	<b>N</b> = No Cap	<b>N</b> = Non ROHS <b>R</b> = ROHS conform	<b>TR</b> = Tape/Reel Packing <b>TU</b> = Tube Packing <b>BU</b> = Bulk Ware
--------------------	------------------------	--------------------	---	-----------------------------	-------------------	--	--

### SMT Tact Switch

Part No.: **Q12000**

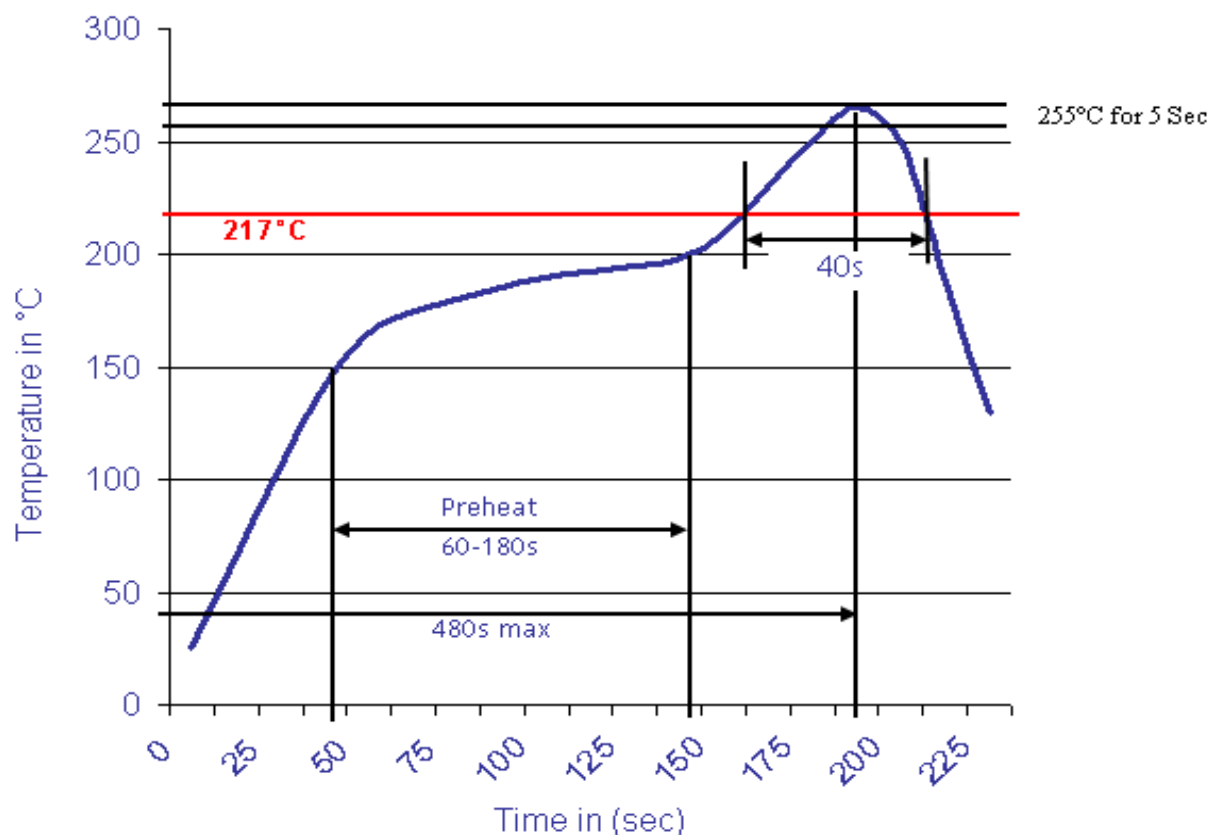
Customer:

DRW:	Jason	CHKD	Wilson	MATL:	Wilson	TOLERANCE	Mason	DATE	12.05.2014
APPD:	Schumi			FINISH	Jamy		Sheet No.		2 from 3



Soldering Profile Curve

Classification Reflow Profile (JEDEC J-STD-020C)



**SMT Tact Switch**

Part No.: **Q12000**

DRW:	Jason	CHKD	Wilson	MATL:	Wilson	TOLERANCE	Mason	DATE	12.05.2014
APPD:	Schumi			FINISH	Jamy		Sheet No.	3 from 3	Customer:

