

EDCON-COMPONENTS

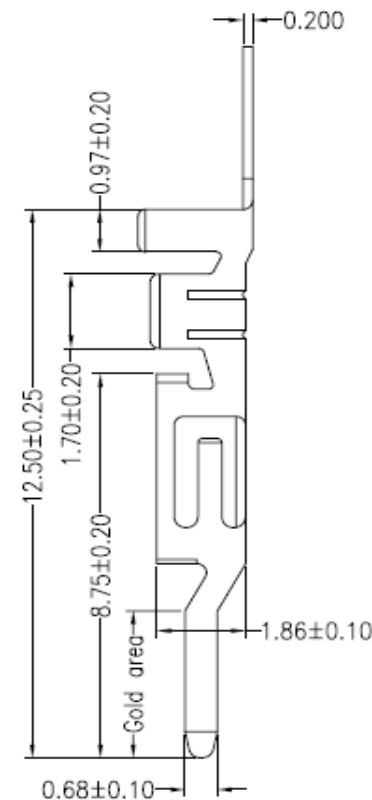
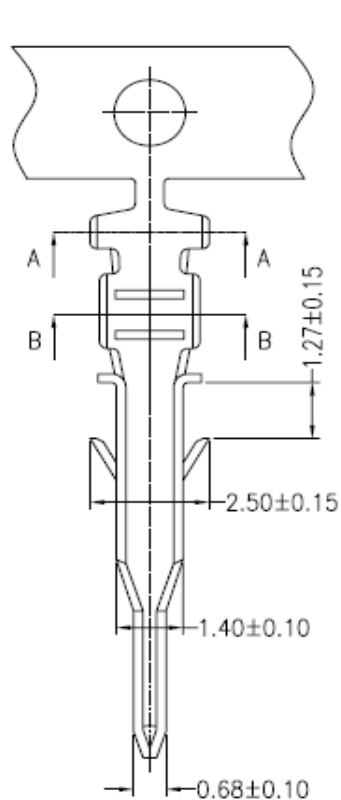
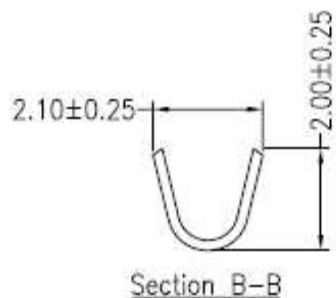
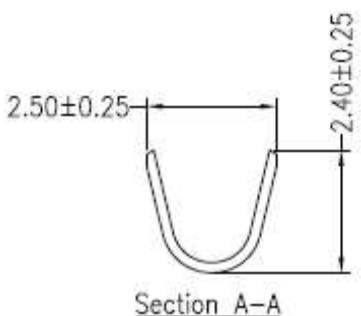


Specifications

Voltage Rating:	250V AC/DC
Current Rating	5,0A
Operating Temperature	. -25°C ~ 85°C
Contact Resistance	10milli Ohm max.
Withstanding Voltage	1500V AC/Minute
Insulation Resistance	1000M Ohm min.
Applicable Wire	AWG 20 ~ AWG 30
Applicable P.C.B	
Applicable FPC/FFC	
Solder Height	
Crimp Tensile Strength	

Drawing (dimensions all into mm)

Terminal Assembly Drawing



Male Terminal to Housing Serie
xxxxxx Pitch 3,00mm

Part No.: **T68Q007**

DRW:	Jason	CHKD	Wilson	MATL:	Wilson	TOLERANCE	Mason	DATE	02.04.2009
APPD:	Schumi			FINISH	Jamy		Sheet No.	1 from 2	Customer:

www.edcon-components.com

email: info@edcon-components.com

EDCON-COMPONENTS



Ordering Informations

Serie	AWG-Wire	Contact Material	Contact Plating	Packing					
-------	----------	------------------	-----------------	---------	--	--	--	--	--

T68Q007	20	B	T	TR153					
----------------	-----------	----------	----------	--------------	--	--	--	--	--

20= AWG 20 ~ 24	B= Brass	T= Tin Plated (Standard)	TR103 = Tape /Reel 10000PCS						
	P= Phosphor Bronze	G= Gold Flash Plated							
		G1= 3µ Gold							
		G5= 5µ Gold							
		G10= 10µ Gold							
		G15= 15µ Gold							
		G30= 30µ Gold							
		S0= Gold Flash / Tin	G10= 10µ Gold / Tin						
		S3= 3µ Gold / Tin	G15= 15µ Gold / Tin						
		G5= 5µ Gold / Tin	G30= 30µ Gold / Tin						

Male Terminal to Housing Serie
xxxxxx Pitch 3,00mm

Part No.: **T68Q007**

DRW:	Jason	CHKD	Wilson	MATL:	Wilson	TOLERANCE	Mason	DATE	02.04.2009
APPD:	Schumi			FINISH	Jamy		Sheet No.		2 from 2

Customer: