

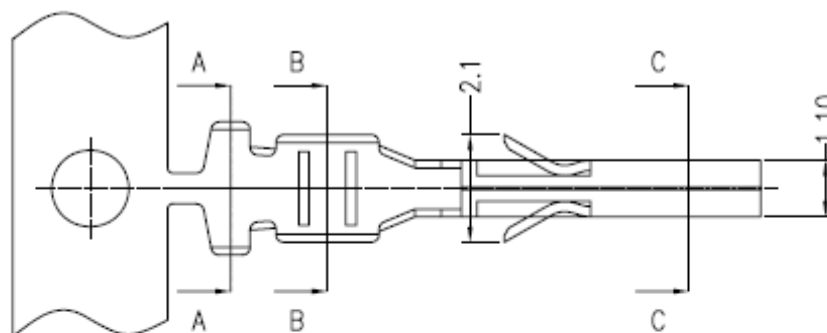
# EDCON-COMPONENTS



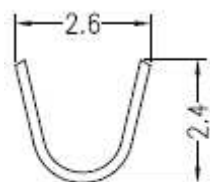
## Specifications

Voltage Rating:	250V AC/DC
Current Rating	5,0A
Operating Temperature	-25°C ~ 85°C
Contact Resistance	10milli Ohm max.
Withstanding Voltage	1500V AC/Minute
Insulation Resistance	1000M Ohm min.
Applicable Wire	AWG 20 ~ AWG 30
Applicable P.C.B	
Applicable FPC/FFC	
Solder Height	
Crimp Tensile Strength	

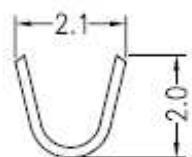
## Drawing ( dimensions all into mm)



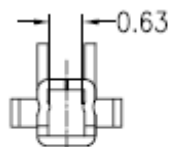
## Terminal Assembly Drawing



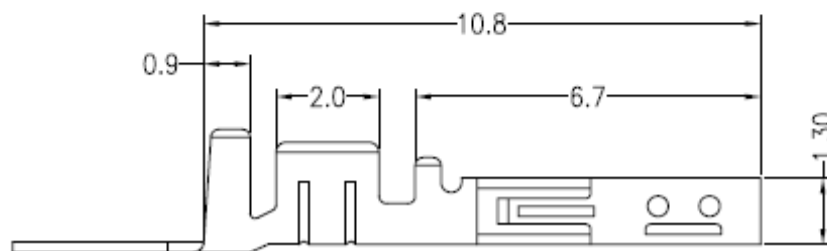
Section A-A



Section B-B



Section C-C



Female Terminal to Housing Serie  
xxxxxx Pitch 3,00mm

Part No.: **T68Q005**

Customer:

DRW:	Jason	CHKD	Wilson	MATL:	Wilson	TOLERANCE	Mason	DATE	02.04.2009
APPD:	Schumi			FINISH	Jamy		Sheet No.	1 from 2	

# EDCON-COMPONENTS



## Ordering Informations

Serie	AWG-Wire	Contact Material	Contact Plating	Packing						
-------	----------	------------------	-----------------	---------	--	--	--	--	--	--

<b>T68Q005</b>	<b>20</b>	<b>B</b>	<b>T</b>	<b>TR103</b>						
----------------	-----------	----------	----------	--------------	--	--	--	--	--	--

<b>20=</b> AWG 20 ~ 30	<b>B=</b> Brass	<b>T=</b> Tin Plated (Standard)	<b>TR103 =</b> Tape /Reel 10000PCS							
	<b>P=</b> Phosphor Bronze	<b>G=</b> Gold Flash Plated								
		<b>G1=</b> 3µ Gold								
		<b>G5=</b> 5µ Gold								
		<b>G10=</b> 10µ Gold								
		<b>G15=</b> 15µ Gold								
		<b>G30=</b> 30µ Gold								
		<b>S0=</b> Gold Flash / Tin	<b>G10=</b> 10µ Gold / Tin							
		<b>S3=</b> 3µ Gold / Tin	<b>G15=</b> 15µ Gold / Tin							
		<b>G5=</b> 5µ Gold / Tin	<b>G30=</b> 30µ Gold / Tin							

Female Terminal to Housing Serie  
xxxxxx Pitch 3,00mm

Part No.: **T68Q005**

DRW:	Jason	CHKD	Wilson	MATL:	Wilson	TOLERANCE	Mason	DATE	02.04.2009
APPD:	Schumi			FINISH	Jamy		Sheet No.		2 from 2

Customer: