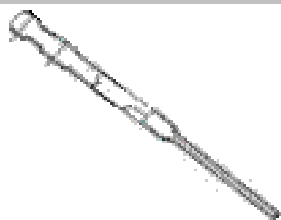


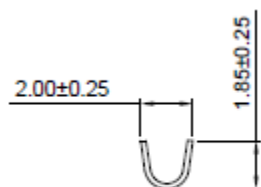
EDCON-COMPONENTS



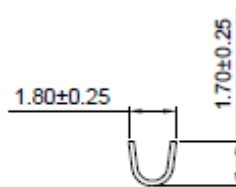
Specifications

Voltage Rating:	250VAC /DC
Current Rating	3AC / DC
Operating Temperature	. -25°C ~ +95°C
Contact Resistance	20mΩ Max.
Withstanding Voltage:	1500V AC/Minute
Material Pin	Brass / Tin-Plated
Wire Dimension:	AWG 22~26
Material Pin	Phosphor Bronze / Tin Plated
Wire Dimension:	AWG 22~26
Insulation D:	1,70mm (max)

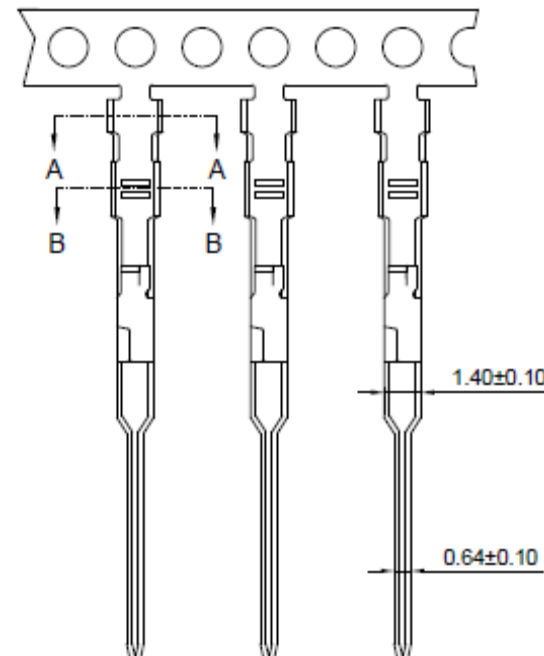
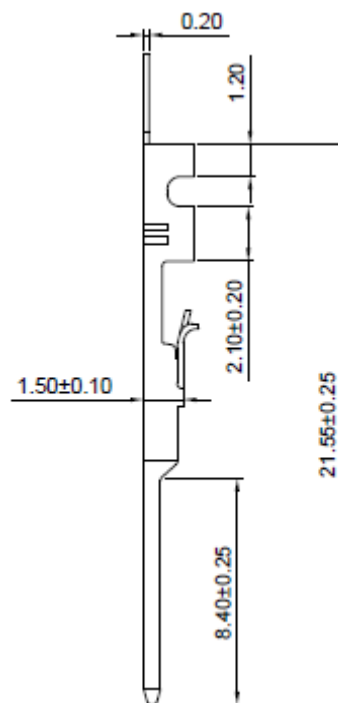
Drawing (dimensions all into mm)



SEC:A-A



SEC:B-B

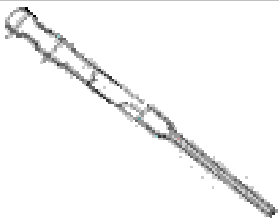


**Male Contact Wire to Board
Serie T68N299 Pitch 2,54mm**

Part No.: **T68N298 -**

DRW:	Jason	CHKD	Wilson	MATL:	Wilson	TOLERANCE	Mason	DATE	14.12.2015	Customer:
APPD:	Schumi			FINISH	Jamy		Sheet No.	1 from 2		

EDCON-COMPONENTS



Ordering Informations

Serie	Number of	Material	C- Plating	ROHS	Packing				
T68N298 -	M	BR	TN	R	TR103				

M = Male Terminal	BR= Brass	TN= TIN Plated Standard	R= ROHS Conform	TR103= Tape Reel 10000PCS
	PB= Phosphor Bronze	GF= Gold Flash / Tin	N= NON ROHS Conform	
		GA= 3µ Gold		
		GB= 5µ Gold		
		GC= 10µ Gold		
		GD= 15µ Gold		
		GE= 30µ Gold		
		SA= 3µ Sel. Gold		
		GB= 5µ Sel. Gold		
		GC= 10µ Sel. Gold		
	GD= 15µ Sel. Gold	GE= 30µ Sel. Gold		

**Male Contact Wire to Board
Serie T68N299 Pitch 2,54mm**
Part No.: **T68N298 -**

DRW:	Jason	CHKD	Wilson	MATL:	Wilson	TOLERANCE	Mason	DATE	14.12.2015	Customer:
APPD:	Schumi			FINISH	Jamy		Sheet No.	2 from 2		